



TOYOTA

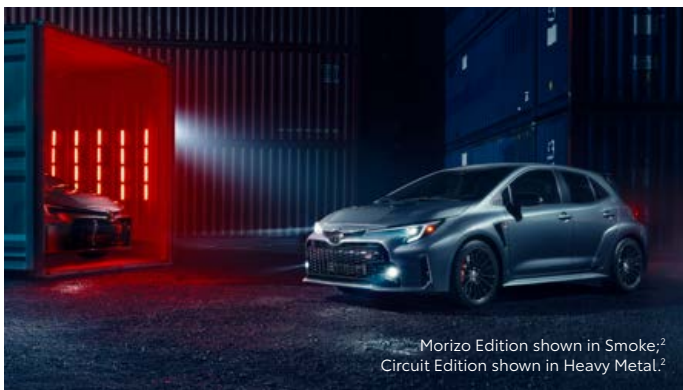
2023

GR COROLLA

GR COROLLA

Drive your inner beast.

While some simply weather the storm, this rip-roaring daredevil embraces it. Introducing the rowdiest member of the GR family, the all-new 2023 Toyota GR Corolla is every gearhead's dream. The exclusively manual-transmission, rally-built hot hatch was born for the track — while still suitable for running errands. Hop in this track-tested, 300-hp⁴⁴ turbocharged beast for your most thrilling ride yet.



See numbered footnotes in Disclosures section.



Racing vehicles not for sale.



Vehicle modified for off-road racing. Professional driver. Racing vehicle not for sale.



By Enthusiasts. For Enthusiasts.

Passion fuels innovation, and it's our passion for motorsports that fuels Gazoo Racing (GR), Toyota's global motorsports division. Racing gives us the opportunity to challenge ourselves — to find what works and fix what doesn't. Collectively, we grow through every turn of the wheel and every second on the road. This dedication to growth from Toyota's return to the World Rally Championship has led us to developing GR Corolla, a rallying beast born to be driven. Toyota is ecstatic to welcome a genuine hot hatch to the rest of the GR lineup of unmistakable sports cars for the everyday driver.



Motorsports DNA

Gazoo Racing started with our unwavering passion for motorsports, and every car that wears the GR badge is developed from this passion. The GR series represents pure sports cars with the DNA of motorsports, with GR Corolla's engine and GR-FOUR originally developed to compete in the World Rally Championship.



Track-tested

Engineered by track-proven drivers, every vehicle that's earned the GR badge has been thoroughly pushed, honed and perfected through extensive testing at racetracks across the globe.



Circuit Edition shown in Heavy Metal.² Professional driver on closed course. Do not attempt.



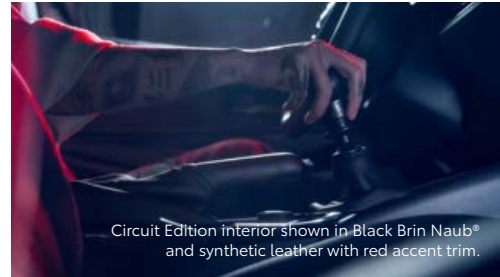
G16E-GTS engine

GR Corolla packs 300 horsepower⁴⁴ and 273 lb.-ft. of torque into its compact 1.6 liter 3-cylinder turbocharged engine. All this to help reduce its overall weight and provide balance as you maneuver every turn.

PERFORMANCE

Spin the throttle.

Engineered to run in the World Rally Championship, GR Corolla was developed to achieve peak motorsports performance. Designed at the same Motomachi plant as the GR Yaris, you know it's built to help you redefine your limits.



Circuit Edition interior shown in Black Brin Naub[®] and synthetic leather with red accent trim.

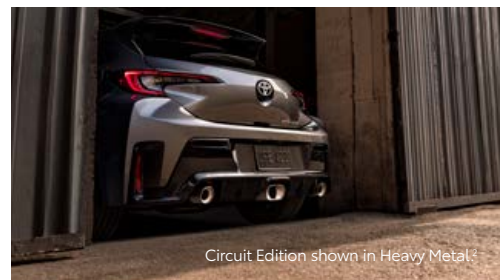
6-speed intelligent Manual Transmission (iMT)

All hands and feet on deck. With only a 6-speed manual transmission available, you've got total control of GR Corolla. Hit the clutch and express yourself with every rev and feel your connection grow with every shift of the stick.



Complimentary 1-year NASA membership

Every 2023 GR Corolla comes with a complimentary 1-year membership to the National Auto Sport Association (NASA).³ As a member, you will enjoy a host of benefits, including one complimentary High-Performance Driving Experience (HPDE),⁴ where you will receive personalized instruction on how to drive your GR Corolla at its limit, and discounted admission to NASA-sanctioned events.



Circuit Edition shown in Heavy Metal.²

Triple exhaust

GR Corolla's trio of exhaust tips show off a unique look, while singing an aggressive exhaust note that's music to your ears. Symmetrically distributed and centered, this growling hot hatch is ready to blast off.



Circuit Edition shown in Heavy Metal.²

GR-FOUR AWD

The all-weather capable GR-FOUR AWD system distributes vigorous power to your front and rear wheels for ultimate traction. Its three selectable power settings let you transform your driving experience for whatever thrills you're seeking. Street Mode splits front and rear torque distribution 60:40, Touring Mode 30:70 and Track Mode 50:50. And with an available dual Torsen^{®7} limited-slip differential, optimize traction even further by enhancing its cornering performance and grip, with control of left- and right-hand drive torque distribution Vehicle Stability Control on the front and rear axles.

HANDLING

Nothing you can't handle.

Vehicle Stability Control

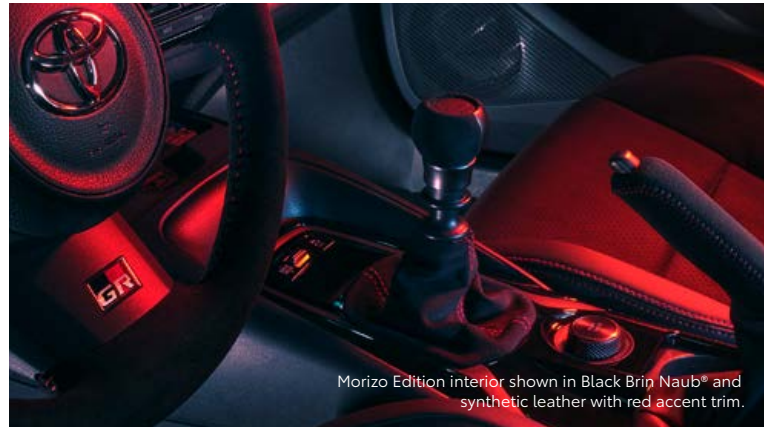
With a push of a button, you can activate GR Corolla's Vehicle Stability Control (VSC),⁵ helping maintain traction and control by automatically applying brake pressure to the wheels. Expert mode disables most of the features that limit GR Corolla, giving you more control of what you do behind the wheel.

High-performance brakes

Save the heat for burning up the track. Sitting behind GR Corolla's black 18-in. wheels are ventilated and slotted brake rotors, featuring four-piston front brake calipers and two-piston rear brake calipers, creating less brake fade.

GR circuit-tuned suspension

For whatever road you take, paved or not, GR Corolla's MacPherson-type strut front suspension and double-wishbone type rear suspension offers a wide range of tuning, including a GR-specific setting to boost your wild ride to the next level.



Morizo Edition interior shown in Black Brin Naub[®] and synthetic leather with red accent trim.



GR COROLLA CIRCUIT & MORIZO EDITIONS

Limited run. Unlimited fun.

With every shift and turn, you know that you're behind the wheel of something special. We're celebrating the launch of GR Corolla with Circuit Edition and pushing it further for the track with Morizo Edition. Enhanced with signature details and performance parts, these limited models are as rare as the perfect J-turn.



1.6L 3-Cylinder Turbo

Powertrain

300

Horsepower¹

Up to

295

Lb.-Ft. of Torque

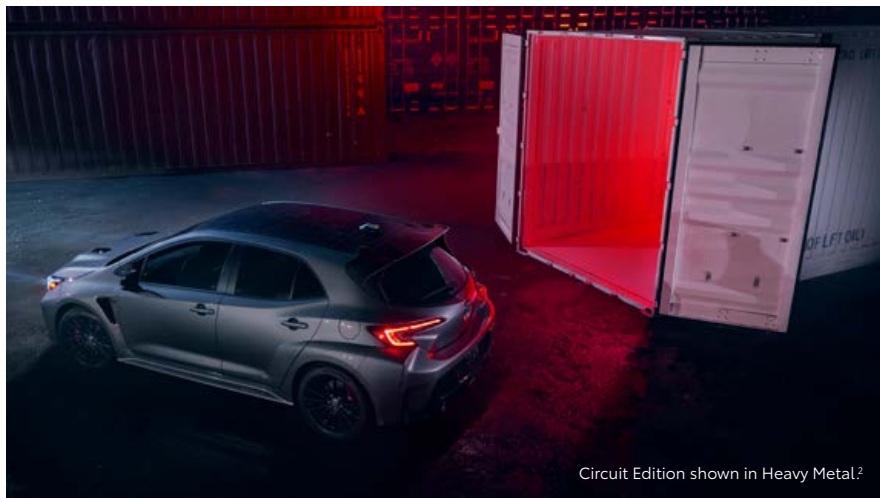
6-Speed

Manual Transmission

GR-FOUR AWD

Drivetrain

GR COROLLA CIRCUIT & MORIZO EDITIONS



Circuit Edition

Limited to only 1,500 units in the continental U.S., GR Corolla Circuit Edition comes in Supersonic Red, Ice Cap and the exclusive Heavy Metal.² To flex some muscle, it sports a hood bulge with vents, along with a forged carbon-fiber roof and master driver-approved spoiler. Inside, seats with red stitching accents continue to show off some attitude, while a placard and unique shift knob remind you of its exclusivity.



Dual Torsen[®] limited-slip differentials

Enhancing the performance for the GR Corolla special editions are dual Torsen^{®7} limited-slip differentials. With the ability to split the power between both left and right axles, you'll lay down the traction you need and distribute more torque on the outer wheels to help get around those corners as smooth as possible. With tighter, sharper turns, you'll easily handle whatever curves are thrown your way.



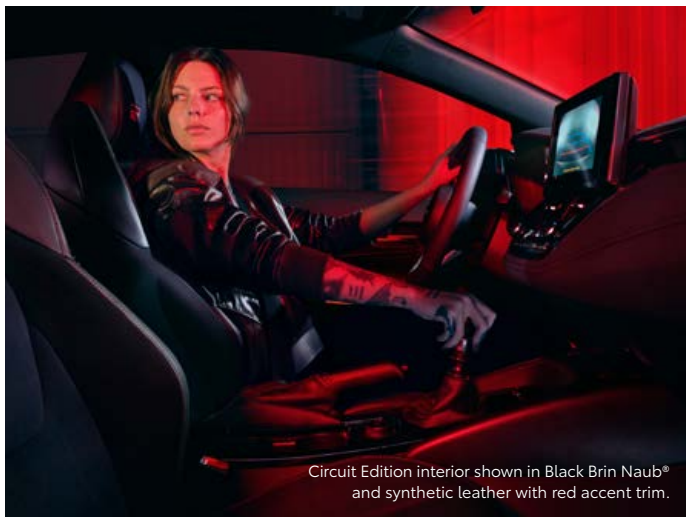
Morizo Edition

A thrilling boost in your drive. This purpose-built two-seater is designed to meet the performance specifications of a GR master driver. Lighter in weight, wider in track and tuned to deliver more torque, it's a force to be reckoned with. And with only 200 units in the continental U.S. made at launch, you'll be one of the privileged to appreciate the race-inspired interior featuring red seatbelts, an Alcantara[®]-wrapped⁸ steering wheel and Morizo signature shift knob.

DESIGN

There's a reason it's called a hot hatch.

Feel a rush of adrenaline every time you take a look at GR Corolla. With room for five and plenty of space in the rear, sharing the thrill comes easy. Sit inside and GR-stitched headrests will remind you of what's under the hood, while its unique steering wheel and front sport seats with side bolsters will help you carve into turns.



Circuit Edition interior shown in Black Brin Naub® and synthetic leather with red accent trim.



Circuit Edition shown in Heavy Metal.² Professional driver on closed course. Do not attempt.



Ready for anything

Even at a standstill, GR Corolla looks like it's ready for action. Flared front and rear fenders show off its wider grip of the road, while sporty touches of gloss-black accents, available, red-painted calipers and GR badging hint that it's more than just good looks.

Functional design

Flow with the wind. This aggressive, but confident design is not just for looks. Designed to enhance performance, the functional front grille helps cool the engine while side fender vents, rear aero vents and rear diffuser help channel air to reduce drag and increase downforce.



Rear styling

GR Corolla means business in the front, rally in the back. The rear sports a triple exhaust and diffuser to add flair to its performance. Styled with a debossed GR-FOUR logo along the side rocker and rear spoiler, GR Corolla does more than look the part.



Customized by you

Enhance your GR Corolla's look and performance with accessories specifically designed, engineered and tested to fit your vehicle. With features like performance shocks, you'll have confidence on the streets and make heads turn.

See numbered footnotes in Disclosures section.

Bring fun along for the ride.



12.3-in. Multi-Information Display shown.

12.3-in. Multi-Information Display

Set behind GR Corolla's steering wheel is a 12.3-in. Multi-Information Display (MID) that puts the most important info in your line of sight. Power it up and the start-up animation lets you know it's raring to go. And with a GR meter that features digital gauges, a center tach and shift indicator lights — you'll find it easier to focus on what's ahead.



Apple CarPlay[®] compatibility shown.

8-in. multimedia touchscreen

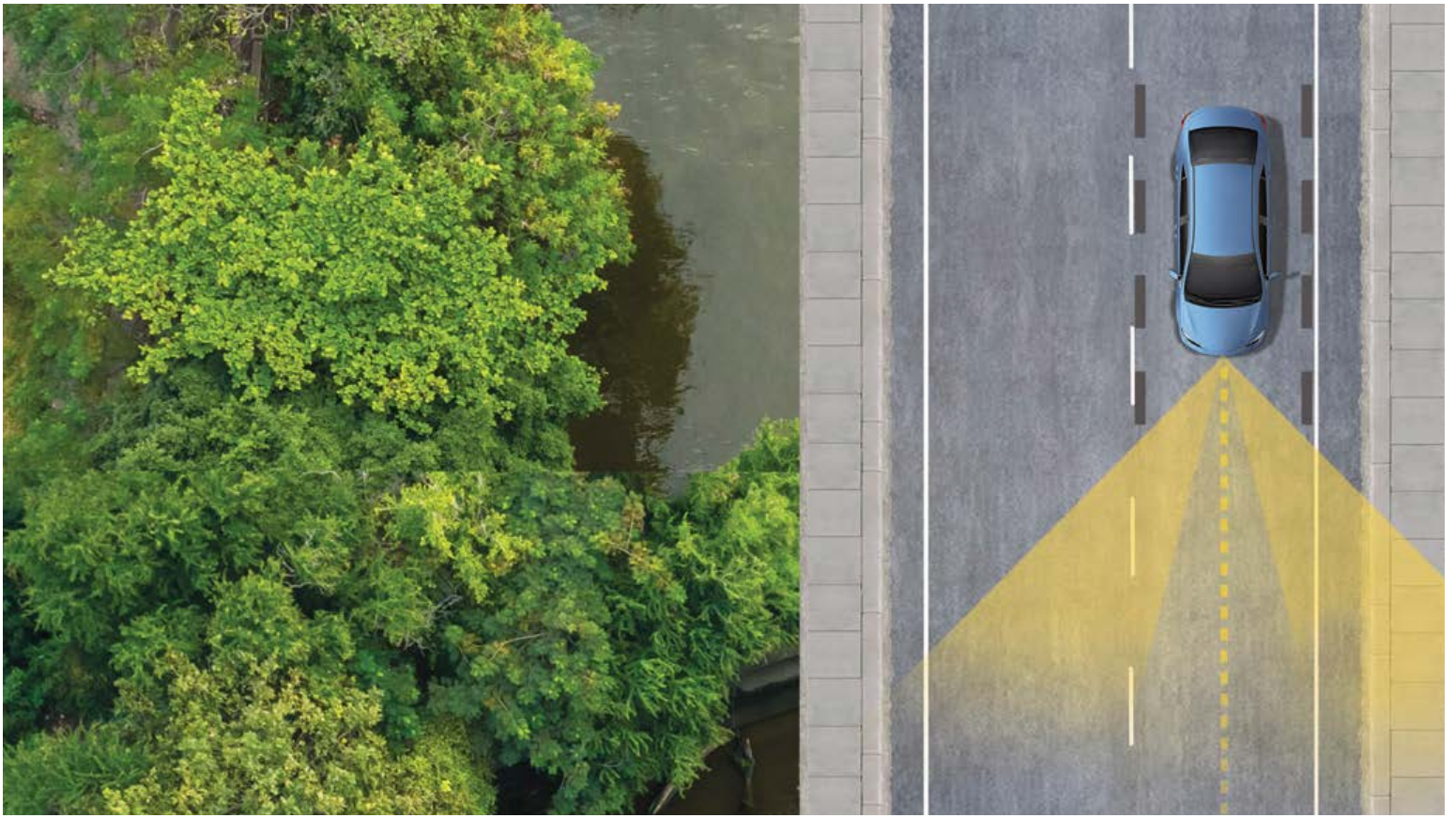
GR Corolla's 8-in. touchscreen comes standard with wireless Apple CarPlay[®] and Android Auto[™] compatibility. Get directions, have your messages read aloud to you, and text back by voice, all while keeping your hands on the wheel.



JBL[®] speaker shown.

JBL[®] Premium Audio

Cleaner, crisper and more dynamic, GR Corolla's available eight-speaker JBL[®] audio system delivers enhanced sound quality to get you in the mood for every drive.



TOYOTA SAFETY SENSE™ 3.0

Peace of mind comes standard.

Toyota Safety Sense™ 3.0¹² is a bundle of active safety features included on the GR Corolla at no additional cost. These innovative features were designed to help protect you and your passengers from harm.



Pre-Collision System with Pedestrian Detection¹³



Dynamic Radar Cruise Control¹⁴



Lane Departure Alert with Steering Assist¹⁵



Automatic High Beams¹⁶



Road Sign Assist¹⁷



Lane Tracing Assist⁵⁵



Core Edition

Includes these key features

Mechanical/Performance

- ✓ G16E-GTS Engine | 1.6L turbo 3-cylinder
- ✓ 300 hp,⁴⁴ 273 lb.-ft. of torque
- ✓ 6-speed intelligent Manual Transmission (iMT)
- ✓ GR-FOUR All-Wheel Drive (AWD) system with three selectable power settings; torque distribution (front: rear): Street (60:40), Touring (30:70) and Track (50:50)
- ✓ Drive Modes: Eco, Normal, Sport and Custom
- ✓ 4-piston aluminum fixed-caliper disc brakes
- ✓ Open differentials
- ✓ GR sport-tuned suspension
- ✓ High-performance Michelin® Pilot® Sport 4 235/40R18 summer tires⁶

Exterior Features

- ✓ LED headlights, Daytime Running Lights (DRL), and taillights
- ✓ Matte-black front grille with GR badge, functional air ducts, and integrated LED fog lights
- ✓ Gloss-black front fender vent and GR badge
- ✓ Color-keyed rear spoiler
- ✓ Side rocker panel with debossed GR-FOUR logo
- ✓ Triple exhaust with brushed stainless steel tips
- ✓ Gloss-black power outside mirrors with turn signals
- ✓ 18-in. gloss-black 15-spoke cast alloy wheels⁶

Interior Features

- ✓ Fabric-trimmed sport seats include:
 - 60/40 split fold-down rear seat
- ✓ 12.3-in. digital Multi-Information Display (MID)
- ✓ GR leather-trimmed tilt/telescopic sport steering wheel
- ✓ Gray stitched interior accents
- ✓ Smart Key System with Push Button Start
- ✓ Two USB 2.0 ports¹⁸

Audio Multimedia

- ✓ Toyota Audio Multimedia includes:
 - 8-in. touchscreen and six speakers
 - Wireless Apple CarPlay^{9,9} & Android Auto^{TM10} compatible
 - SiriusXM^{®19} with 3-month Platinum Plan trial subscription²⁰
- ✓ Safety Connect[®] with up to 10-year trial;²¹ 4G network dependent
- ✓ Service Connect with up to 10-year trial;²² 4G network dependent

Safety Features

- ✓ Toyota Safety Sense[™] 3.0¹²
- ✓ Star Safety System[™]
- ✓ Ten airbags²³
- ✓ Blind Spot Monitor (BSM)²⁴ with Rear Cross-Traffic Alert (RCTA)²⁵

Packages

- ✓ Performance Package:
 - Front and rear Torsen^{®7} limited-slip differentials (LSD)
 - Red-painted calipers and GR logo
- ✓ Technology Package:
 - JBL^{®11} Premium Audio
 - Qi-compatible wireless smartphone charging²⁶
- ✓ Cold Weather Package:
 - Heated front seats and heated steering wheel



Circuit Edition

Adds to or replaces features offered on Core Edition

Mechanical/Performance

- ✓ Front and rear Torsen^{®7} limited-slip differentials (LSD)
- ✓ 4-piston aluminum fixed-caliper disc brakes with red-painted calipers and GR logo

Exterior Features

- ✓ Gloss-black front grille with GR badge, functional air ducts, and integrated LED fog lights
- ✓ Hood bulge and functional gloss-black air vents
- ✓ Forged carbon-fiber roof
- ✓ Gloss-black front fender vent and GR badge
- ✓ Gloss-black sporty rear spoiler
- ✓ Gloss-black rear bumper lower cover with functional air vents

Interior Features

- ✓ Brin Naub[®] and synthetic leather-trimmed sport seats with red accent trim
- ✓ Exclusive Circuit Edition badge
- ✓ Leather Morizo signature shift knob
- ✓ Heated front seats and steering wheel

Audio Multimedia

- ✓ Toyota Audio Multimedia includes:
 - 8-in. touchscreen and eight JBL^{®11} speakers
 - Wireless Apple CarPlay^{9,9} & Android Auto^{TM10} compatible
 - SiriusXM^{®19} with 3-month Platinum Plan trial subscription²⁰
- ✓ Safety Connect[®] with up to 10-year trial;²¹ 4G network dependent
- ✓ Service Connect with up to 10-year trial;²² 4G network dependent
- ✓ Qi-compatible wireless smartphone charging tray with light indicator²⁶

Safety Features

- ✓ Toyota Safety Sense[™] 3.0¹²
- ✓ Star Safety System[™]
- ✓ Ten airbags²³
- ✓ Blind Spot Monitor (BSM)²⁴ with Rear Cross-Traffic Alert (RCTA)²⁵



Morizo Edition

Adds to or replaces features offered on Circuit Edition

Mechanical/Performance

- ✓ 300 hp,⁴⁴ 295 lb.-ft. of torque
- ✓ GR track-tuned suspension
- ✓ One rear strut brace, two floor braces
- ✓ High-performance Michelin® Pilot® Sport Cup 2 245/40R18 summer tires⁶

Exterior Features

- ✓ Gloss-black front grille with GR badge, functional air ducts, and integrated LED fog lights
- ✓ Hood bulge and functional gloss-black air vents
- ✓ Forged carbon-fiber roof
- ✓ Gloss-black front fender vent and GR badge
- ✓ Gloss-black rear spoiler
- ✓ Gloss-black rear bumper lower cover with functional air vents
- ✓ 18-in. matte-black 10-spoke forged alloy wheels⁶

Interior Features

- ✓ Brin Naub[®] and synthetic leather-trimmed semi-bucket sport seats with red accent trim
- ✓ GR Ultrasuede-wrapped²⁸ tilt/telescopic sport steering wheel with red sight line
- ✓ Exclusive Morizo Edition badge
- ✓ Alcantara^{®8} Morizo signature shift knob
- ✓ Heated track-inspired front seats

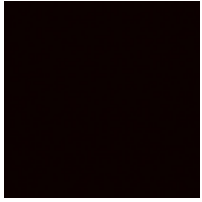
Audio Multimedia

- ✓ Toyota Audio Multimedia includes:
 - 8-in. touchscreen and two speakers
 - Wireless Apple CarPlay^{9,9} & Android Auto^{TM10} compatible
 - SiriusXM^{®19} with 3-month Platinum Plan trial subscription²⁰
- ✓ Safety Connect[®] with up to 10-year trial;²¹ 4G network dependent
- ✓ Service Connect with up to 10-year trial;²² 4G network dependent
- ✓ Qi-compatible wireless smartphone charging tray with light indicator²⁶

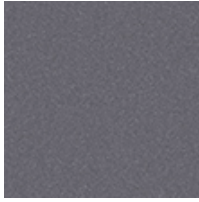
Safety Features

- ✓ Toyota Safety Sense[™] 3.0¹²
- ✓ Star Safety System[™]
- ✓ Ten airbags²³
- ✓ Blind Spot Monitor (BSM)²⁴ with Rear Cross-Traffic Alert (RCTA)²⁵

GR COROLLA COLOR, TRIM & WHEELS



Black



Smoke²



Heavy Metal²



Supersonic Red²



Wind Chill Pearl²



Ice Cap

Core Edition Black fabric with gray accent trim



Circuit Edition and Morizo Edition Black Brin Naub[®] and synthetic leather with red accent trim



Core Edition & Circuit Edition 18-in. gloss-black 15-spoke cast alloy wheel⁶



Morizo Edition 18-in. matte-black 10-spoke forged alloy wheel⁶

GR COROLLA ACCESSORIES

This is a great way to add extra personality to your GR Corolla. Not every accessory is available in your area, so for a complete list of accessories, go to toyota.com/grcorolla/accessories.



All-weather cargo mat⁴⁵



First aid kit



Cargo net⁴⁵



Owner portfolio



Carpet floor mat⁵²



Door sill protectors



Wheel locks



Carpet cargo mat⁴⁵

WARRANTIES

Every Toyota Car, Truck and SUV is built to exceptional standards. And that's not idle boasting. We back it up with these Limited Warranty Coverages:

Basic: 36 months/36,000 miles (all components other than normal wear and maintenance items).

Powertrain: 60 months/60,000 miles (engine, transmission/transaxle, drive system, seatbelts and airbags).

Rust-Through: 60 months/unlimited miles (corrosion perforation of sheet metal).

Emissions: Coverages vary under Federal and California regulations. Refer to applicable *Warranty and Maintenance Guide* for details.

Accessories: For Genuine Toyota Accessories purchased at the time of the new vehicle purchase, the Toyota Accessory Warranty coverage is in effect for 36 months/36,000 miles from the vehicle's in-service date, which is the same coverage as the Toyota New Vehicle Limited Warranty.

For Genuine Toyota Accessories purchased after the new vehicle purchase the coverage is 12 months, regardless of mileage, from the date the accessory was installed on the vehicle, or the remainder of any applicable new vehicle warranty, whichever provides greater coverage.

You may be eligible for transportation assistance if it's necessary that your vehicle be kept overnight for repairs covered under warranty. Please see your authorized Toyota dealership for further details.

For complete details about Toyota's warranties, please visit www.toyota.com, refer to the applicable *Warranty and Maintenance Guide* or see your Toyota dealer.

GR COROLLA FEATURES²⁷

S = Standard O = Optional

Exterior

	Core Edition	Circuit Edition	Morizo Edition
Side rocker panel with debossed GR-FOUR logo	S	S	S
Color-keyed roof-mounted shark-fin antenna	S		
Matte-black roof-mounted shark-fin antenna		S	S
Hood bulge and functional gloss black air vents		S	S
Auto on/off LED headlights and LED Daytime Running Lights (DRL)	S	S	S
LED taillights	S	S	S
Gloss-black power outside mirrors with turn signal indicators	S	S	S
Matte-black front grille with GR badge, functional air ducts, and integrated LED fog lights	S		
Gloss-black front grille with GR badge, functional air ducts, and integrated LED fog lights		S	S
Color-keyed rear spoiler	S		
Gloss-black sporty rear spoiler		S	
Gloss-black rear spoiler			S
Color-keyed roof	S		
Forged carbon-fiber roof		S	S
Gloss-black front fender vent and GR badge	S	S	S
Matte-black rear bumper lower cover with functional air vents	S		
Gloss-black rear bumper lower cover with functional air vents		S	S
Triple exhaust with brushed stainless steel tips	S	S	S
Widened front and rear fender flares	S	S	S
18-in. x 8.5-in. gloss black 15-spoke cast alloy wheels ⁶	S	S	
18-in. x 8.5-in. matte black 10-spoke forged alloy wheels ⁶			S

Interior

Aluminum sport pedals	S	S	S
GR-FOUR AWD select dial for power settings	S	S	S
12.3-in. digital Multi-Information Display (MID) with GR start-up animation, AWD mode, turbo pressure, and gear shift indicators, odometer, outside temperature, fuel economy and trip information, current/average fuel economy, distance to empty, average speed, trip distance with timer, TPMS ²⁹ scheduled maintenance, and compass and warning messages.	S	S	S
Gray stitched interior accents	S		
Red stitched interior accents		S	
Red stitched interior accents with red seatbelts			S
Exclusive Circuit Edition badge		S	
Exclusive Morizo Edition badge			S
Leather Morizo signature shift knob		S	
Alcantara ^{®8} Morizo signature shift knob			S
Fabric sport seats with gray stitching and GR-badged headrests; 6-way adjustable driver's seat with seatback pocket; 4-way adjustable front passenger seat with seatback pocket	S		
Brin Naub [®] and synthetic leather-trimmed sport seats with red stitching, red mesh inserts, and GR-badged headrests; 6-way adjustable driver's seat with seatback pocket; 4-way adjustable front passenger seat with seatback pocket		S	
Brin Naub [®] and synthetic leather-trimmed semi-bucket sport seats with red stitching, red mesh inserts, and GR-badged headrests; 6-way adjustable driver's seat with seatback pocket; 4-way adjustable front passenger seat with seatback pocket			S
GR engine start/stop button	S	S	S
GR leather-trimmed, tilt/telescopic sport steering wheel including audio, Multi-Information Display (MID), Bluetooth ^{®30} hands-free phone and voice-command controls	S	S	
GR Ultrasuede [®] -wrapped ²⁸ tilt/telescopic sport steering wheel with red sight line, including audio, Multi-Information Display (MID), Bluetooth ^{®30} hands-free phone and voice-command controls			S
Smart Key System remote keyless entry system with Push Button Start	S	S	S
Automatic climate control	S	S	S
Power windows with one-touch auto up/down	S	S	S
60/40 split fold-down rear seats with center armrest and cup holders	S	S	
Glove box	S	S	S
One 12V auxiliary power outlet ⁴⁷	S	S	S
Two USB 2.0 charge ports ¹⁸	S	S	S
Qi-compatible wireless smartphone charging with full charge indicator light ²⁶	O	S	
Heated front seats and steering wheel	O	S	


Audio Multimedia

	Core Edition	Circuit Edition	Morizo Edition
8-in. Toyota Audio Multimedia with two speakers — wireless Apple CarPlay ⁸⁹ & Android Auto ^{TM10} compatible, SiriusXM ^{®19} with 3-month Platinum Plan trial subscription. ²⁰ See toyota.com/audio-multimedia for details.			S
8-in. Toyota Audio Multimedia with six speakers — wireless Apple CarPlay ⁸⁹ & Android Auto ^{TM10} compatible, SiriusXM ^{®19} with 3-month Platinum Plan trial subscription. ²⁰ See toyota.com/audio-multimedia for details.	S		
8-in. Toyota Audio Multimedia with eight-speaker JBL ^{®11} Premium Audio with amplifier — wireless Apple CarPlay ⁸⁹ & Android Auto ^{TM10} compatible, SiriusXM ^{®19} with 3-month Platinum Plan trial subscription. ²⁰ See toyota.com/audio-multimedia for details.	O	S	

Connected Services

Drive Connect ⁴⁸ capable — includes Cloud Navigation with Google Points-of-Interest (POI) data, Intelligent Assistant with Hey, Toyota, and Destination Assist. ³⁶ Subscription required after trial. 4G network dependent. (*1-year trial subscription)	S	S*	S*
Remote Connect ³⁴ with 1-year trial subscription — remotely interact with your vehicle through the Toyota app ⁴⁹ via your smartwatch, ⁵⁰ Amazon Alexa-enabled ³¹ devices, and Google Assistant TM -enabled ⁵¹ devices. Allowing you to lock/unlock doors, locate your last parked location, check vehicle status and monitor guest drivers. Subscription required after trial. 4G network dependent.	S	S	S
Service Connect ²² with up to 10-year trial subscription — receive personalized maintenance updates and vehicle health reports. Subscription required after trial. 4G network dependent.	S	S	S
Wi-Fi Connect ³⁵ with up to 30-day or 3 GB trial subscription — includes AT&T Wi-Fi hotspot and Integrated Streaming (Apple Music ^{®58} and Amazon Music ^{TM59}) compatibility. 1-month trial subscription for music services. Subscription required after trial. 4G network dependent.	S	S	S
Safety Connect ^{®21} with up to 10-year trial subscription — includes Emergency Assistance button, enhanced Roadside Assistance, ³⁸ Automatic Collision Notification and Stolen Vehicle Locator. ³⁷ Subscription required after trial. 4G network dependent.	S	S	S

Safety and Convenience

 Star Safety System TM — includes Enhanced Vehicle Stability Control (VSC) ⁵ , Traction Control (TRAC), 4-wheel Anti-lock Brake System (ABS), Electronic Brake-force Distribution (EBD), Brake Assist (BA) ³⁹ and Smart Stop Technology [®] (SST) ⁴⁰	S	S	S
Ten airbags ²³ — includes Advanced Airbag System with driver and front passenger dual stage airbags, front side airbags, driver knee airbag, passenger seat cushion airbag, front and side curtain airbags, and seat-mounted side airbags	S	S	S
Variable intermittent rear windshield wiper	S	S	
Side-impact door beams	S	S	S
LATCH (Lower Anchors and Tethers for Children) includes lower anchors on outboard rear seats	S	S	S
Rearview camera ⁴¹ with parking aid lines	S	S	S
Toyota Safety Sense TM 3.0 ¹² — Pre-Collision System with Pedestrian Detection (PCS w/PD), ¹³ Lane Departure Alert with Steering Assist (LDA w/SA), ¹⁵ Automatic High Beams (AHB), ¹⁶ Dynamic Radar Cruise Control (DRCC), ¹⁴ Road Sign Assist (RSA) ¹⁷ and Lane Tracing Assist (LTA) ⁵⁵	S	S	S
Driver and front passenger Whiplash-Injury-Lessening (WIL) seats ⁴²	S	S	S
Child-protector rear door locks and power window lockout control	S	S	S
3-point seatbelts for all seating positions; driver-side Emergency Locking Retractor (ELR) and Automatic/Emergency Locking Retractor (ALR/ELR) on all passenger belts	S	S	S
Energy-absorbing collapsible steering column	S	S	S
Variable intermittent windshield wipers	S	S	S
Blind Spot Monitor (BSM) ²⁴ with Rear Cross-Traffic Alert (RCTA) ²⁵	S	S	S
Tire Pressure Monitor System (TPMS) ²⁹	S	S	S
Anti-theft system with engine immobilizer ⁴³	S	S	S

Packages

Performance Package — includes front and rear Torsen ^{®7} limited-slip differentials, red-painted brake calipers, and GR logo	P		
Technology Package — includes with JBL ^{®11} Premium Audio and Qi-compatible wireless smartphone charging ²⁶	P		
Cold Weather Package — includes heated front seats and heated steering wheel	P		

GR COROLLA SPECIFICATIONS

S = Standard O = Optional

Mechanical/Performance

Core Edition Circuit Edition Morizo Edition

ENGINE

G16E-GTS 1.6L turbo inline 3-cylinder	S	S	S
Horsepower ⁴⁴ (hp @ rpm)	300 @ 6500	300 @ 6500	300 @ 6500
Torque (lb.-ft. @ rpm)	273 @ 3000-5500	273 @ 3000-5500	295 @3250-4600
0-60 mph (seconds) ¹	4.99	4.99	4.92
Top track speed (electronically controlled) (mph)	142.9	142.9	142.9
Drive Modes: Eco, Normal, Sport and Custom	S	S	S

ENGINE SPECIFICATIONS

Max boost pressure (psi)	25.2	25.2	26.3
Redline (rpm)	7,200	7,200	7,200
DOHC 12-Valve drivetrain	S	S	S
Displacement (cm3)	1618	1618	1618
Bore x stroke (mm)	87.5 X 89.7	87.5 x 89.7	87.5 x 89.7
Compression ratio	10.5 : 1	10.5 : 1	10.5 : 1
Direct-injection fuel system	S	S	S
Premium fuel octane rating ⁴⁴	91+	91+	91+
Engine dry weight (lb.)	240	240	240
Engine oil capacity (US qt.)	5.4	5.4	5.4
Engine oil grade and weight: IL-SAC GF-6A, SAE 0W-20	S	S	S

TRANSMISSION

6-speed intelligent Manual Transmission (iMT) with rev-matching	S	S	S
1st gear	3.538	3.538	3.214
2nd gear	2.238	2.238	2.238
3rd gear	1.535	1.535	1.592
4th gear	1.162	1.162	1.162
5th gear	1.081	1.081	1.081
6th gear	0.902	0.902	0.902
Reverse	3.831	3.831	3.557
Differential ratio (1st - 4th)	4.058	4.058	4.250
Differential ratio (5th, 6th, Reverse)	3.450	3.450	3.578

DRIVETRAIN

All-Wheel Drive (AWD)	S	S	S
GR-FOUR AWD system with three selectable power settings; torque distribution (front:rear): Street (60:40), Touring (30:70) and Track (50:50)	S	S	S
Open differentials	S		
Front and rear Torsen ^{®7} limited-slip differentials	O	S	S

SUSPENSION

MacPherson-type strut front suspension	S	S	S
Double-wishbone type rear suspension	S	S	S
GR sport-tuned double-wishbone type suspension	S	S	
GR track-tuned suspension			S
One rear strut brace	S	S	
One rear strut brace, two floor braces			S

STEERING

GR circuit-tuned Electric Power Steering (EPS); power-assisted rack-and-pinion	S	S	S
Steering wheel turns (lock-to-lock)	2.44 rev	2.44 rev	2.44 rev
Turning circle diameter, curb-to-curb (ft.)	36.1	36.1	36.1

BRAKES

4-piston aluminum fixed-caliper disc brakes; 14-in. x 1.1-in. ventilated and slotted rotors (front)	S		
4-piston aluminum fixed-caliper disc brakes with red-painted calipers and GR logo; 14-in. x 1.1-in. ventilated and slotted rotors (front)	O	S	S
2-piston aluminum fixed-caliper disc brakes; 11.7-in. x 0.7-in. ventilated rotors (rear)	S		
2-piston aluminum fixed-caliper disc brakes with red-painted calipers and GR logo; 11.7-in. x 0.7-in. ventilated rotors (rear)	O	S	S
Center hand brake	S	S	S

GR COROLLA SPECIFICATIONS

S = Standard O = Optional

Dimensions

Core Edition Circuit Edition Morizo Edition

EXTERIOR (in.)

Overall height without/with antenna	57.2/58.2	57.2/58.2	57.2/58.2
Overall width	72.8	72.8	72.8
Overall length	173.6	173.6	173.6
Wheelbase	103.9	103.9	103.9
Track (front/rear)	62.6/62.6	62.6/62.6	62.6/63.7
Ground clearance	5.3	5.3	5.1
Coefficient of drag (Cd)	0.35	0.35	0.35

INTERIOR front/rear (in.)

Head room	38.4/37.6	38.4/37.6	38.4/37.6
Shoulder room	53.9/54.5	53.9/54.5	53.9/54.5
Hip room	53.9/45.5	53.9/45.5	53.9/45.5
Leg room	42.0/29.9	42.0/29.9	42.0/29.9

Weights and Capacities

Passenger volume (cu. ft.)	84.6	84.6	50.4
EPA cargo volume (cu. ft.), ⁴⁵ seats up	17.8	17.8	36.6
Fuel capacity (gal.)	13.2	13.2	13.2
Seating	5	5	2
Power-to-weight ratio (hp/lbs.)	0.092	0.091	0.094
Curb weight (lb.) (without/with dual LSD)	3252/3262	3285	3186

Tires

TYPE

235/40R18 Michelin® Pilot® Sport 4 high-performance summer tires ⁶	S	S	
245/40R18 Michelin® Pilot® Sport Cup 2 high-performance summer tires ⁶			S
Spare	Tire repair kit	Tire repair kit	Tire repair kit

Mileage Estimates (mpg city/highway/combined)⁴⁶

	21/28/24	21/28/24	21/28/24
--	----------	----------	----------

DISCLOSURES

1. Performance figures are for comparison only and were obtained with prototype vehicles by professional drivers using special safety equipment and procedures. Do not attempt.

2. Extra-cost color. 3. NASA membership is non-transferable and expires 1 year after purchase of your 2022 GR vehicle. The 1-day High Performance Driving Event (HPDE) is included as a membership benefit and must be redeemed within 1 year from the time of purchase of your vehicle. NASA membership and complimentary HPDE are not redeemable for cash or any other offer. 4. Valid in U.S. only. For qualified drivers over 18 years of age, with a valid driver's license. Participation in high-performance driving creates a risk of personal injury or death and may cause damage to your vehicle that is not covered by your insurance or warranty. Please refer to your insurance policy and your vehicle's Warranty and Maintenance Guide that describes the terms and conditions of Toyota's New Vehicle Limited Warranty coverage as well as general owner responsibilities. 5. Vehicle Stability Control is an electronic system designed to help the driver maintain vehicle control under adverse conditions. It is not a substitute for safe and attentive driving practices. Factors including speed, road conditions, weather and driver steering input can all affect whether VSC will be effective in preventing a loss of control. See *Owner's Manual* for additional limitations and details. 6. Performance tires are expected to experience greater tire wear than conventional tires. Tire life may be less than 24,000 miles, depending upon driving conditions. 7. Torsen® is a registered trademark of Zexel Torsen, Inc. 8. Alcantara® is a registered trademark of Alcantara S.p.A. 9. Apps and services are subject to change at any time without notice. Data charges may apply. Apple CarPlay® functionality requires a compatible iPhone® connected wirelessly to the vehicle. Apple CarPlay® is a registered trademark of Apple Inc. 10. Android™ and Android Auto™ are trademarks of Google LLC. To wirelessly use Android Auto™ on your car display, you need a compatible Android™ smartphone with an active data plan. You can check which smartphones are compatible at g.co/androidauto/requirements. 11. JBL® is a registered trademark of Harman International Industries, Inc. 12. Toyota Safety Sense™ effectiveness is dependent on many factors including road, weather and vehicle conditions. Drivers are responsible for their own safe driving. Always pay attention to your surroundings and drive safely. See *Owner's Manual* for additional limitations and details. 13. The Pre-Collision System (PCS) with Pedestrian Detection (PD) is designed to determine if impact is imminent and help reduce impact speed and damage in certain frontal collisions involving a vehicle, a pedestrian, a bicycle, or a motorcyclist. PCS w/PD is not a substitute for safe and attentive driving. System effectiveness depends on many factors, such as speed, size and position of pedestrian or bicyclist and weather, light and road conditions. See *Owner's Manual* for additional limitations and details. 14. Dynamic Radar Cruise Control (DRCC) is designed to assist the driver and is not a substitute for safe and attentive driving practices. System effectiveness is dependent on many factors including road, weather and traffic conditions. DRCC not available on manual transmissions. See *Owner's Manual* for additional limitations and details. 15. Lane Departure Alert with Steering Assist is designed to read visible lane markers under certain conditions. It provides a visual and audible alert and slight steering force when lane departure is detected. It is not a collision-avoidance system or a substitute for safe and attentive driving. Effectiveness is dependent on many factors including road, weather and vehicle conditions. See *Owner's Manual* for additional limitations and details. 16. Automatic High Beams operate at speeds above 25 mph. Factors such as a dirty windshield, weather, lighting and terrain limit effectiveness, requiring the driver to manually operate the high beams. See *Owner's Manual* for additional limitations and details. 17. Do not rely exclusively on Road Sign Assist (RSA). RSA is a driver support system that utilizes the vehicle's forward-facing camera and navigation system (when data is available) to recognize certain road signs and provide information to the driver via the multi-information display and/or Head-Up Display. Effectiveness is dependent on road, weather, vehicle and sign conditions. Use common sense when using RSA and do not drive distracted. See *Owner's Manual* for additional limitations and details. 18. May not be compatible with all mobile phones, MP3/WMA players and like models. 19. Trial length and service availability may vary by model, model year or trim. Service will automatically stop at the end of your trial subscription period unless you decide to continue service. If you do not wish to enjoy your trial, you can cancel by calling the number below. All SiriusXM services require a subscription, each sold separately by SiriusXM after the trial period. Service subject to the SiriusXM Customer Agreement and Privacy Policy; visit www.siriusxm.com to see complete terms and how to cancel which includes calling 1-866-635-2349. Some services and features are subject to device capabilities and location availability. All fees, content and features are subject to change. SiriusXM, Pandora and all related logos are trademarks of Sirius XM Radio Inc. and its respective subsidiaries. 20. SiriusXM trial length and service availability may vary by model, model year or trim. 21. Safety Connect® depends on factors outside of Toyota's control, including an operative telematics device, a cellular connection, GPS signal, and the availability of a compatible wireless network, without which system functionality and availability may be limited or precluded, including access to response center and emergency support. Stolen vehicle police report required to use Stolen Vehicle Locator. Automatic Collision Notification activates only in limited circumstances. Requires app download/registration and subscription after trial (if applicable). Service subject to change at any time without notice. Terms of Use apply. Service may vary by vehicle and region. See usage precautions and service limitations in *Owner's Manual* and at toyota.com/connected-services for additional details. To learn about Toyota's Connected Services data collection, use, sharing and retention practices, please visit <https://www.toyota.com/privacyvts/>. The Safety Connect® trial period (if applicable) is at no extra cost and begins on the original date of purchase or lease of a new vehicle. Subscription required after trial to access the service. 22. Information provided is based on the last time data was collected from the vehicle and is not real-time data. Service Connect depends on factors outside of Toyota's control, including an operative telematics device, a cellular connection, GPS signal, and the availability of a compatible wireless network, without which system functionality and availability may be limited or precluded. Service may vary by vehicle and region. Requires app download/registration and subscription after trial. Service subject to change at any time without notice. Terms of Use apply. Data charges may apply. See usage precautions and service limitations in *Owner's Manual* and at toyota.com/connected-services for additional details. To learn about Toyota's Connected Services data collection, use, sharing and retention practices, please visit <https://www.toyota.com/privacyvts/>. Service Connect is not renewable as a stand-alone service and requires a subscription to any of Safety Connect®, Remote Connect or Drive Connect upon trial expiration. The Service Connect trial period is at no extra cost and begins on the original date of purchase or lease of a new vehicle. Service Connect is not renewable as a stand-alone service and requires a subscription to any of Safety Connect®, Remote Connect or Drive Connect upon trial expiration. 23. Airbag systems are Supplemental Restraint Systems and are designed to inflate only under certain conditions and in certain types of severe collisions. To decrease the risk of injury from an inflating airbag, always wear seatbelts and sit upright in the middle of the seat as far back as possible. Do not put objects in front of an airbag or around the seatback. Do not use a rearward-facing child seat in any front passenger seat. See *Owner's Manual* for additional limitations and details. 24. Do not rely exclusively on the Blind Spot Monitor. Always look over your shoulder and use your turn signal. There are limitations to the function, detection and range of the monitor. See *Owner's Manual* for additional limitations and details. 25. Do not rely exclusively on the Rear Cross-Traffic Alert system. Always look over your shoulder and use your mirrors to confirm rear clearance. There are limitations to the function, detection and range of the system. See *Owner's Manual* for additional limitations and details. 26. Qi wireless charging may not be compatible with all mobile phones, MP3/WMA players and like models. When using the wireless charging system, avoid placing metal objects between the wireless charger and the mobile device when charging is active. Doing so may cause metal objects to become hot and could cause burns. 27. Toyota strives to build vehicles to match customer interest and thus they typically are built with popular options and option packages. Not all options/packages are available separately and some may not be available in all regions of the country. See toyota.com for information about options/packages commonly available in your area. If you would prefer a vehicle without any or with different options, contact your dealer to check for current availability or the possibility of placing a special order. Color(s) depicted may vary based on multiple factors, including ambient lighting and the format in which it is being viewed (e.g., computer, mobile device or print). 28. Ultrasuede® is a registered trademark of Toray Industries, Inc. 29. The Tire Pressure Monitor System alerts the driver when tire pressure is critically low. For optimal tire wear and performance, tire pressure should be checked regularly with a gauge; do not rely solely on the monitor system. See *Owner's Manual* for additional limitations and details. 30. The Bluetooth® word mark and logos are registered trademarks owned by Bluetooth SIG, Inc., and any use of such marks by Toyota is under license. A compatible Bluetooth®-enabled phone must first be paired. Phone performance depends on software, coverage and carrier. 31. Amazon, Alexa and all related marks are trademarks of Amazon.com, Inc. or its affiliates. Certain functions require adequate signal strength and/or smartphone technology/connectivity. Not all Amazon Alexa functionality is available for in-vehicle use. See applicable app for details. Download of the Toyota app and Toyota+Alexa app are both required to begin in-vehicle use of Alexa. Data charges may apply for certain functions. Apps and services subject to change at any time without notice. To learn more, go to <https://www.toyota.com/audio-multimedia>. To learn more about Toyota's data collection, use, sharing and retention practices, please visit <https://www.toyota.com/privacyvts/>. 32. Dynamic Navigation depends on factors outside of Toyota's control, including an operative telematics device, a cellular connection, GPS signal, and the availability of a compatible wireless network, without which system functionality and availability may be limited or precluded. Services not available in every city or roadway. Use common sense when relying on information provided. Service may vary by vehicle and region. Registration is required. Subscription required after trial. Terms of Use apply. Data charges may apply. See *Owner's Manual* and <https://www.toyota.com/connected-services> for additional limitations and details. To learn about Toyota's Connected Services data collection, use, sharing and retention practices, please visit <https://www.toyota.com/privacyvts/>. 33. Connected Services depend on factors outside Toyota's control, including an operative telematics device, a cellular connection, GPS signal and the availability of a compatible wireless network, without which system functionality and availability may be limited or precluded, including access to response center and emergency support. Service may vary by vehicle and region. Apps and services subject to change at any time without notice. Requires app download/registration and subscription after trial (if applicable). Terms of Use apply. Data usage and charges may apply. See usage precautions and service limitations in *Owner's Manual* and <https://www.toyota.com/connected-services/> for additional limitations and details. To learn about Toyota's Connected Services data collection, use, sharing and retention practices, please visit <https://www.toyota.com/privacyvts/>. Connected Services trials are at no extra cost. All trials begin on the original date of purchase or lease of a new vehicle, with the exception of Wi-Fi for which the trial begins at the time of activation. Paid subscription required after trial in order to continue accessing the respective services. Terms of Use apply. 34. Use only if aware of circumstances surrounding vehicle and it is legal and safe to do so (e.g., do not remotely start engine if vehicle is in an enclosed space or vehicle is occupied by a child). Remote Connect depends on factors outside of Toyota's control, including an operative telematics device, a cellular connection, GPS signal, and the availability of a compatible wireless network, without which system functionality and availability may be limited or precluded. Digital Key also requires Bluetooth® connectivity. Service may vary by vehicle and region. Requires app download and registration/subscription after trial (if applicable). Terms of Use apply. Data charges may apply. Remote start/stop not available on manual transmission-equipped vehicles. Services subject to change at any time without notice. See usage precautions and service limitations in Toyota *Owner's Manual* and at <https://www.toyota.com/connected-services/> for additional details. To learn about Toyota's Connected Services data collection, use, sharing and retention practices, please visit <https://www.toyota.com/privacyvts/>. 35. Eligible vehicle and wireless service required. Wi-Fi Connect depends on factors outside of Toyota's control, including an operative telematics device, a cellular connection, GPS signal, and the availability of a compatible wireless network, without which system functionality and availability may be limited or precluded. Wi-Fi Connect coverage and service not available everywhere. Valid in the contiguous U.S. and Alaska. Do not drive distracted. Go to att.com/toyota for terms and conditions. Data usage and charges apply. Up to 5 devices can be supported using in-vehicle connectivity. Apps and services subject to change at any time without notice. The Wi-Fi Connect trial begins at the time of enrollment and expires the earlier of 3GB data use or the 1-month trial period ends. Subscription required after trial. Integrated Streaming requires separate subscriptions to third-party provider services. Terms of Use apply. Destination Assist depends on factors outside of Toyota's control, including an operative telematics device, a cellular connection, GPS signal, and the availability of a compatible wireless network, without which system functionality and availability may be limited or precluded. Use common sense

DISCLOSURES

when relying on this information. Service may vary by vehicle and region. Registration required. Subscription required after trial. Services subject to change at any time without notice. Data charges may apply. See *Owner's Manual* and [toyota.com/connected-services](https://www.toyota.com/connected-services) for additional limitations and details. To learn about Toyota's Connected Services data collection, use, sharing and retention practices, please visit <https://www.toyota.com/privacyvts/>. The Wi-Fi Connect trial begins at the time of enrollment and expires when 30 days or the earlier of 3GB of data is used or the 1-month period ends. Subscription required after trial. Integrated Streaming requires separate subscriptions to third-party provider services. Terms of Use apply.

36. Destination Assist depends on factors outside of Toyota's control, including an operative telematics device, a cellular connection, GPS signal, and the availability of a compatible wireless network, without which system functionality and availability may be limited or precluded. Use common sense when relying on this information. Service may vary by vehicle and region. Registration required. Subscription required after trial. Services subject to change at any time without notice. Terms of Use apply. Data charges may apply. See *Owner's Manual* and [toyota.com/connected-services](https://www.toyota.com/connected-services) for additional limitations and details. To learn about Toyota's Connected Services data collection, use, sharing and retention practices, please visit <https://www.toyota.com/privacyvts/>. The Destination Assist trial period is at no extra cost and begins on the original date of purchase or lease of a new vehicle. Paid subscription required after trial to access the service.

37. Building and/or parking structures may limit system effectiveness. Stolen vehicle police report required to use Stolen Vehicle Locator. For additional assistance contact the Toyota Customer Experience Center at 1-800-331-4331.

38. Requires adequate cellular coverage and GPS signal strength. May not work in all areas. Service may vary by vehicle and region. See Toyota Dealer for details and exclusions.

39. Brake Assist is designed to help the driver take advantage of ABS and is not a substitute for safe driving practices. Braking effectiveness also depends on proper vehicle maintenance, tire and road conditions. See *Owner's Manual* for additional limitations and details.

40. Smart Stop Technology® operates only in the event of certain contemporaneous brake and accelerator pedal applications. When engaged, the system will reduce power to help the brakes bring the vehicle to a stop. Factors including speed, road conditions and driver input can all impact stopping distance. Smart Stop Technology® is not a substitute for safe and attentive driving and does not guarantee instant stopping. See *Owner's Manual* for additional limitations and details.

41. The backup camera does not provide a comprehensive view of the rear area of the vehicle and you should also look around the vehicle, using mirrors to confirm rearward clearance. Environmental conditions may limit effectiveness and view may become obscured. See *Owner's Manual* for additional limitations and details.

42. Whiplash-Injury-Lessening front seats can help reduce the severity of whiplash injury in certain rear-end collisions.

43. The engine immobilizer is a state-of-the-art anti-theft system that is initiated when you insert your key into the ignition switch or bring a Smart Key fob into the vehicle. The engine will only start if the code in the transponder chip inside the key/fob matches the code in the vehicle's immobilizer. The transponder chip is embedded in the key/fob and can be costly to replace. If you lose a key or fob, your Toyota dealer can help or go to www.alo.org to find a qualified locksmith in your area who can perform high-security key service.

44. Ratings achieved using the required premium unleaded gasoline with an octane rating of 91 (AKI) or higher. If premium fuel is not used, performance will decrease. If unleaded gasoline with an octane rating of 91 (AKI) is not available, unleaded gasoline with an octane rating of 89 (AKI) may be used. See *Owner's Manual* for details.

45. Cargo and load capacity limited by weight and distribution. Always properly secure cargo and cargo area.

46. 2023 EPA-estimated mpg rating estimates as determined by manufacturer. EPA estimates not available at time of posting. Use for comparison purposes only. Your mileage will vary for many reasons, including your vehicle's condition and how/where you drive. See www.fueleconomy.gov.

47. Rated for 12 volts/10 amps. See *Owner's Manual* for additional limitations and details.

48. Drive Connect availability and accuracy depend on factors outside of Toyota's control, including an operative telematics device, a cellular connection, GPS signal, and the availability of a compatible wireless network, without which system functionality and availability may be limited or precluded. Services not available in every city or roadway. Services subject to change at any time without notice. Requires app download/registration and subscription required after trial (if applicable). Terms of Use apply. See *Owner's Manual* and <https://www.toyota.com/connected-services/> for additional limitations and details. To learn about Toyota's Connected Services data collection, use, sharing and retention practices, please visit <https://www.toyota.com/privacyvts/>. The Drive Connect trial period is at no extra cost and begins on the original date of purchase or lease of a new vehicle. Paid subscription required after trial (if applicable) to access the service. Terms of Use apply.

49. Toyota app requires an active Remote Connect trial or subscription.

50. Not all smartwatches are compatible with Remote Connect: Samsung Gear, Fitbit, Garmin are not compatible.

51. Google is a trademark of Google LLC.

52. This floor mat/floor liner was designed specifically for use in your model and model year vehicle and SHOULD NOT be used in any other vehicle. To avoid potential interference with pedal operation, each mat/liner must be secured with its fasteners. Do not install a floor mat/floor liner on top of an existing floor mat/floor liner.

53. Apple Music and the Apple logo are trademarks of Apple Inc., registered in the U.S. and other countries. Requires Wi-Fi Connect subscription after trial (if applicable) and your own Apple Music account.

54. Amazon Music, and all related marks are trademarks of Amazon Technologies, Inc. or its affiliates.

55. The Lane Tracing Assist (LTA) lane centering function is designed to read visible lane markers and detect other vehicles under certain conditions. It is only operational when DRCC is engaged. See *Owner's Manual* for additional limitations and details.

Toyota strives to build vehicles to match customer interest and thus they typically are built with popular options and option packages. Not all options/packages are available separately and some may not be available in all regions of the country. See [toyota.com](https://www.toyota.com) for information about options/packages commonly available in your area. If you would prefer a vehicle without any or with different options, contact your dealer to check for current availability or the possibility of placing a special order.

Color(s) depicted may vary based on multiple factors, including ambient lighting and the format in which it is being viewed (e.g., computer, mobile device or print).

Some vehicles are shown with available equipment. Seatbelts should be worn at all times. For details on vehicle specifications, standard features and available equipment in your area, contact your Toyota dealer. A vehicle with particular equipment may not be available at the dealership. Ask your Toyota dealer to help locate a specifically equipped vehicle.

Accessories may vary by model year, not be available in all regions of the country, or require a special order. Please see your dealer for availability.

All information presented herein is based on data available at the time of posting, is subject to change without notice and pertains specifically to mainland U.S.A. vehicles only. Vehicles shown may be prototypes, shown using visual effects and/or shown with options. Actual models may vary.



For Toyota Mobility program details, go to www.toyota.com/mobility or call the Toyota Brand Engagement Center at 1-800-331-4331