



ROGUE®

2023





Get to living. Go Rogue

The family crossover that's just as thrilling solo. Generous cargo space, advanced connectivity features, and a never-ending capacity for adventure.^{1,2} This is the Nissan Rogue.[®]

Nissan Rogue[®] Platinum AWD shown in Two-tone Champagne Silver Metallic / Super Black with LED fog lights.



Three genius displays, so many pixels at play

Start with the available Head-Up Display in the upper-left corner,⁴ then drop your gaze to the digital dashboard — twelve inches of available vibrant data right behind the steering wheel.⁵ A third display, the available 9" infotainment screen, sits just to the right.⁶ Together, they offer nearly three feet of digital information, allowing you to configure Rogue® to what you need in the moment. Now look again. See how each display is positioned to give you the info you want? This is customization — pixel by pixel.



You heard it here first Bose, a leader in high-fidelity sound systems, designed an available highly customized listening experience for Rogue. Based on proprietary design and the acoustical analysis of the cabin, Bose brings the power of sound to every seat.



Room for five, plus space for the biggest personalities

Pick your seat and relax. Building a crossover from the ground up is about more than premium amenities. It's about designing an experience, where family and friends feel welcome and any size personality fits in. So enjoy the available soft semi-aniline leather appointments, the available rear USB ports, and the available Tri-Zone Automatic Temperature Control. Revel in rear doors that open almost 90° for easier entry. And amaze everyone with the view from the available Dual Panel Panoramic Moonroof.

In the cargo area, it's easy to configure the space. With the available Divide-N-Hide® cargo system, a set of adjustable dividers gives you six different configurations. You can construct everything from a private storage area to a series of layered shelves. So get in there and mix it up!

Nissan Rogue® Platinum AWD shown in Charcoal Quilted Semi-aniline Leather with optional equipment.³

Dial up the adventure

Meet Nissan's most capable Rogue® yet. An available Intelligent All-Wheel Drive system with direct coupling reacts almost instantly to help enhance stability and traction.⁷ With so many possibilities in front of you, there's virtually no limit to where you can go. That's why Rogue offers up to five drive modes for practically every scenario. Choose Auto Mode to handle your everyday drive, or select one of the specialized modes to help you tackle more-challenging conditions.

Off-Road Mode From gravel to sand to dirt, available Off-Road Mode is uniquely tuned to help you get up to speed. By balancing the transmission and throttle response, Rogue tailors your all-terrain experience for maximum confidence.

Snow Mode If one of your favorite routes has fresh powder, available Snow Mode is engineered to help you make fresh tracks. It knows to back off on the throttle and shift to a higher gear ratio, helping you stay in control.

Eco Mode Like its name implies, Eco Mode is engineered to help boost fuel economy.⁸ When selected, engine and Xtronic CVT® (Continuously Variable Transmission) controls change to help you drive as efficiently as possible.

Sport Mode The fun starts here, especially if you're about to take on a series of curves. Dial up Sport Mode and the Rogue responds with tighter steering and sharper throttle response. You respond with growing confidence and huge grins as you enter every twist and turn.

treadlightly!_{only}



Nissan Rogue® Platinum AWD shown in Two-tone Pearl White TriCoat / Super Black with Splash Guards, Chrome Rear Bumper Protector, Rear Underbody Trim, Roof Rail Crossbars,^{1, 2} and Affiliated: Yakima® ForkLift — Fork Mounted Bike Rack.^{1, 10}

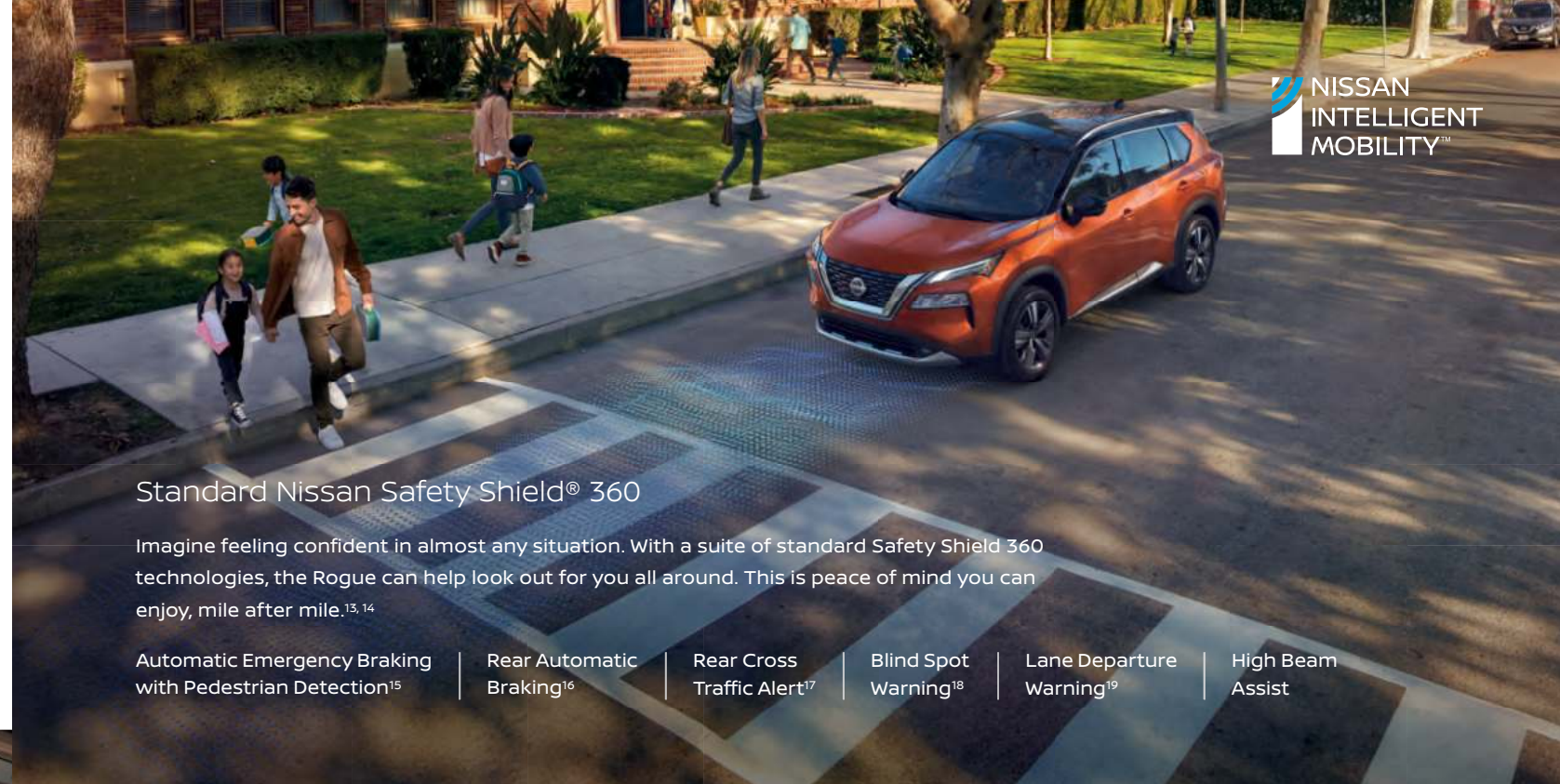


Power or efficiency? Yes

37 | 201 | 225
hwy mpg⁸ | horsepower | lb-ft of torque

Go Rogue[®] with the kind of numbers designed to exhilarate your soul and satisfy your conscience. It starts with the revolutionary Variable Compression Turbo (VC-Turbo[®]) engine that can deliver low-compression, turbocharged power and then transform to provide high-compression efficiency.⁸ All of which means you get the best of both worlds in one engine. Thrilling power. Long-distance efficiency. No compromise.

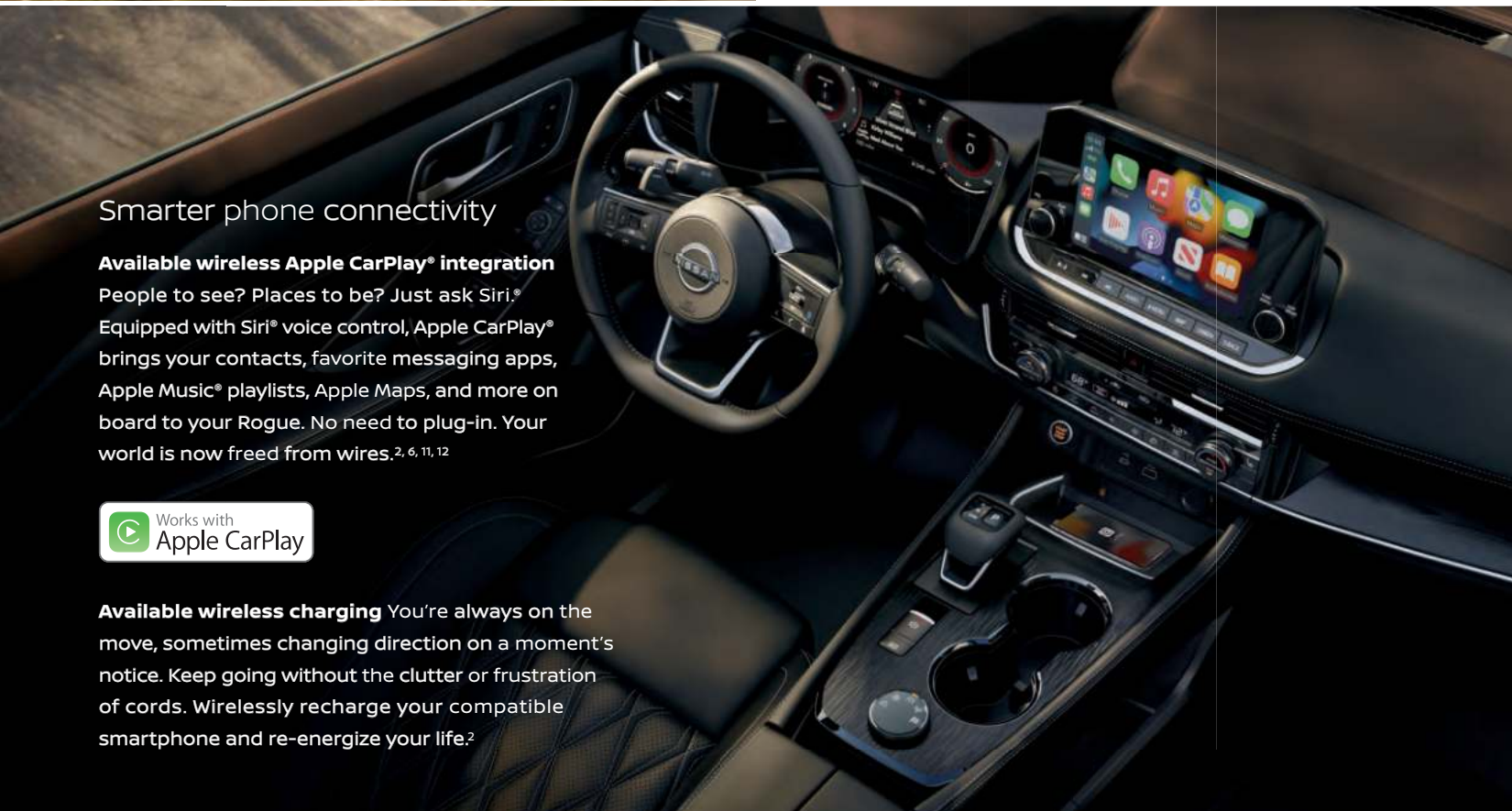
NISSAN
INTELLIGENT
MOBILITY™



Standard Nissan Safety Shield[®] 360

Imagine feeling confident in almost any situation. With a suite of standard Safety Shield 360 technologies, the Rogue can help look out for you all around. This is peace of mind you can enjoy, mile after mile.^{13, 14}

Automatic Emergency Braking with Pedestrian Detection¹⁵ | Rear Automatic Braking¹⁶ | Rear Cross Traffic Alert¹⁷ | Blind Spot Warning¹⁸ | Lane Departure Warning¹⁹ | High Beam Assist



Smarter phone connectivity

Available wireless Apple CarPlay[®] integration

People to see? Places to be? Just ask Siri.[®] Equipped with Siri[®] voice control, Apple CarPlay[®] brings your contacts, favorite messaging apps, Apple Music[®] playlists, Apple Maps, and more on board to your Rogue. No need to plug-in. Your world is now freed from wires.^{2, 6, 11, 12}



Available wireless charging You're always on the move, sometimes changing direction on a moment's notice. Keep going without the clutter or frustration of cords. Wirelessly recharge your compatible smartphone and re-energize your life.²

Available ProPILOT Assist with Navi-link

You may not know what's ahead but with ProPILOT Assist with Navi-link, the Rogue is on it.²⁰

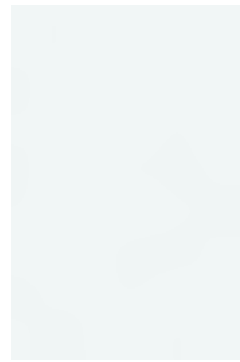
Available ProPILOT Assist helps you navigate stop-and-go freeway traffic while also helping to keep you centered in your lane.²⁰ Opt for ProPILOT Assist with Navi-link, and the concept of hassle-free driving rises to a new level.²⁰

By utilizing freeway mapping, available ProPILOT Assist with Navi-link is able to "read the road." What it does with that information gives you a totally new perspective.²⁰

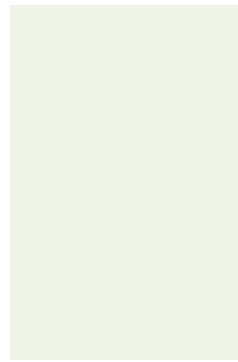
- Helps smooth the way for upcoming turns, junctions, and off-ramps by adjusting your speed
- Can track posted speed limits with the ability to alter your set speed accordingly



CHOOSE YOUR COLOR



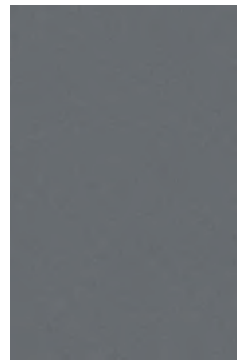
Glacier White



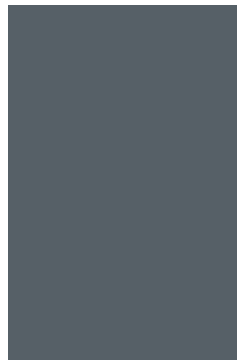
Pearl White TriCoat²¹



Brilliant Silver Metallic

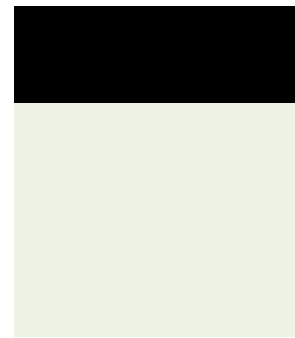


Gun Metallic



Boulder Gray Pearl²¹

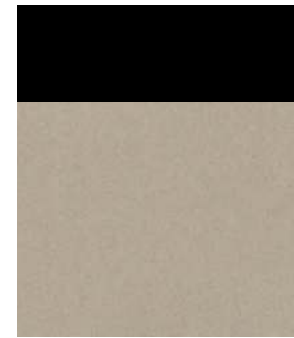
	S	SV	SL	PLT
Charcoal Cloth	■			
Charcoal Cloth		■		
Light Gray Cloth			■	
Charcoal Prima-Tex™ Leatherette				P
Light Gray Prima-Tex™ Leatherette				P
Charcoal Leather ³				■
Light Gray Leather ³				■
Charcoal Semi-aniline Leather ³				■
Tan Semi-aniline Leather ³				■



Two-tone Pearl White TriCoat / Super Black²¹



Two-tone Boulder Gray Pearl / Super Black²¹



Two-tone Champagne Silver Metallic / Super Black²¹



Two-tone Sunset Drift ChromaFlair® / Super Black²¹



Two-tone Caspian Blue Metallic / Super Black²¹

	S	SV	SL	PLT
Two-tone Pearl White TriCoat / Super Black ²¹				
Two-tone Boulder Gray Pearl / Super Black ²¹				
Two-tone Champagne Silver Metallic / Super Black ²¹				
Two-tone Sunset Drift ChromaFlair® / Super Black ²¹				
Two-tone Caspian Blue Metallic / Super Black ²¹				

- Standard
- P Part of SV Premium Package

Nissan has taken care to ensure that the color swatches presented here are the closest possible representations of actual vehicle colors. Swatches may vary slightly due to the printing process and whether viewed in daylight, fluorescent or incandescent light. Please see the actual colors at your dealer.



Champagne Silver Metallic



Scarlet Ember Tintcoat²¹



Caspian Blue Metallic



Super Black

	S	SV	SL	PLT
Charcoal Cloth	■			
Charcoal Cloth		■		
Light Gray Cloth			■	
Charcoal Prima-Tex™ Leatherette				P
Light Gray Prima-Tex™ Leatherette				P
Charcoal Leather ³				■
Light Gray Leather ³				■
Charcoal Semi-aniline Leather ³				■
Tan Semi-aniline Leather ³				■

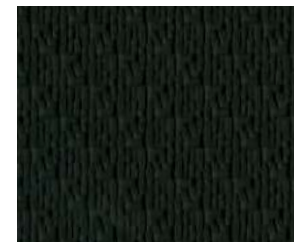
CHOOSE YOUR INTERIOR



Charcoal Cloth S



Charcoal Cloth SV



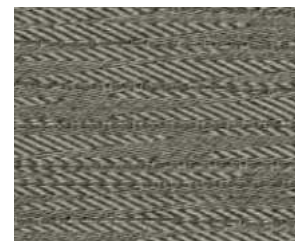
Charcoal Prima-Tex™ Leatherette SV



Charcoal Leather³ SL



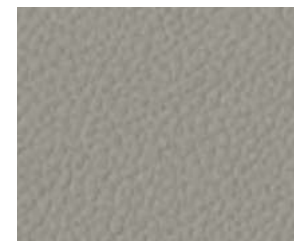
Charcoal Semi-aniline Leather³ Platinum



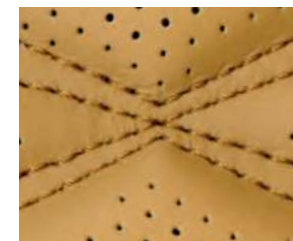
Light Gray Cloth SV



Light Gray Prima-Tex™ Leatherette SV



Light Gray Leather³ SL



Tan Semi-aniline Leather³ Platinum

CHOOSE YOUR TRIM LEVEL

S

- Variable Compression Turbo (VC-Turbo®) engine with 201 hp and 225 lb-ft of torque
- Available Intelligent All-Wheel Drive (AWD) with Drive Mode Dial and Snow and Off-Road Modes⁷
- Intelligent Forward Collision Warning²²
- Automatic Emergency Braking with Pedestrian Detection¹⁵
- Lane Departure Warning¹⁹
- Blind Spot Warning¹⁸
- Rear Cross Traffic Alert¹⁷
- Rear Automatic Braking¹⁶
- High Beam Assist
- Intelligent Driver Alertness²³
- 17" Aluminum-alloy wheels
- LED headlights with LED Daytime Running Lights
- LED taillights
- Rear Door Alert²⁴
- Advanced Drive-Assist™ Display⁵
- NissanConnect® 8" color touch-screen display⁶
- Apple CarPlay® integration⁶
- Android Auto™ compatibility⁶
- Nissan Advanced Air Bag System²⁵



SV INCLUDES S EQUIPMENT PLUS:

- ProPILOT Assist²⁰
- Intelligent Blind Spot Intervention¹⁸
- Intelligent Lane Intervention¹⁹
- 18" Aluminum-alloy wheels
- Heated outside mirrors
- Dual Zone Automatic Temperature Control
- Nissan Intelligent Key® with Push Button Ignition and four door request switches
- Remote Engine Start System²⁶ with Intelligent Climate Control
- 8-way power driver's seat, with 2-way power lumbar support
- NissanConnect® Services powered by SiriusXM⁶
- NissanConnect® with Wi-Fi Hotspot⁶
- Two USB-A ports and two USB-C ports²

AVAILABLE PACKAGE:

- Premium Package
- Midnight Edition® Package



SL INCLUDES SV EQUIPMENT PLUS:

- Intelligent Around View® Monitor²⁷
- 19" Aluminum-alloy wheels
- Roof rails¹
- Dual Panel Panoramic Moonroof
- Auto-dimming inside rearview mirror
- Outside mirrors with LED turn signal indicators and reverse tilt-down feature
- Two 12-volt DC power outlets
- Divide-N-Hide® cargo system¹
- 4-way power front-passenger's seat
- Memory System — driver's seat and outside mirrors
- Leather-appointed seats
- Leather-wrapped heated steering wheel
- Heated front seats

AVAILABLE PACKAGE:

- Premium Package



PLATINUM INCLUDES SL EQUIPMENT PLUS:

- ProPILOT Assist with Navi-link²⁰
- Front, Rear, and Side Sonar System²⁸
- Traffic Sign Recognition²⁹
- Motion Activated Liftgate
- Quilted semi-aniline leather-appointed seats
- Alexa Built-in^{6, 30}
- Digital dashboard with fully digital gauges⁵
- Rear door sunshades
- NissanConnect® 9" color touch-screen display⁶
- Nissan Door to Door Navigation with Premium Traffic¹²
- NissanConnect® Services powered by SiriusXM⁶
- Wireless Apple CarPlay® integration⁶
- SiriusXM Traffic and Travel Link⁶
- Bose Premium Audio System, including dual-driver woofer
- Wireless charger²
- Interior accent lighting
- Remote-folding rear seats

AVAILABLE PACKAGE:

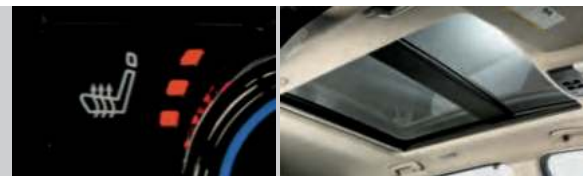
- Premium Package



CHOOSE YOUR PACKAGE

SV PREMIUM PACKAGE

Roof rails,¹ Power liftgate, Dual Panel Panoramic Moonroof, Rear door sunshades, Prima-Tex™ leatherette-appointed seats, Leather-wrapped heated steering wheel, Heated front seats



SV MIDNIGHT EDITION® PACKAGE

18" Gloss black aluminum-alloy wheels, Black V-Motion grille, Black front and rear bumper trim pieces, Black outside mirrors, Black roof rails,¹ Black rear diffuser, Satin black rear badging, Midnight Edition® badge, TailorFit™ leatherette-appointed seats



SL PREMIUM PACKAGE

ProPILOT Assist with Navi-link,²⁰ Front, Rear, and Side Sonar System,²⁸ Traffic Sign Recognition,²⁹ Motion Activated Liftgate, Tri-Zone Automatic Temperature Control, Rear door sunshades, NissanConnect® 9" color touch-screen display,⁶ Nissan Door to Door Navigation with Premium Traffic,¹² NissanConnect® Services powered by SiriusXM,⁶ Wireless Apple CarPlay® integration,⁶ Alexa Built-in,^{6, 30} SiriusXM Traffic and Travel Link,⁶ Bose Premium Audio System, including dual-driver woofer



PLATINUM PREMIUM PACKAGE

Tri-Zone Automatic Temperature Control, Heated rear seats, Head-Up Display⁴



NISSAN ROGUE® ACCESSORIES

Turn brand-new into all you

Every Genuine Nissan Accessory is custom-fit, custom-designed, and durability-tested. Each one is backed by Nissan's 3-year/36,000-mile (whichever occurs first) limited warranty (if installed by dealer at the time of new vehicle purchase) and can be financed when installed by dealer at time of new vehicle purchase.³¹ Affiliated Yakima® accessories are not warranted by Nissan. Refer to product manufacturer for warranty details. Nissan Limited Warranty does not cover damages or failures to the vehicle caused by improper installation or alterations of any Nissan approved accessory or component. Contact your dealer/retailer for details.¹⁰

For more information and to shop online for Rogue® Genuine Nissan Accessories, go to bit.ly/23Rogue-Accys



Left: **Nissan Rogue® Platinum AWD** shown in Two-tone Champagne Silver Metallic / Super Black with Exterior Ground Lighting, Side Window Deflectors, Chrome Rear Bumper Protector, Splash Guards, Rear Underbody Trim, Roof Rail Crossbars,^{1,9} and Affiliated: Yakima® ForkLift — Fork Mounted Bike Rack.^{1,10}

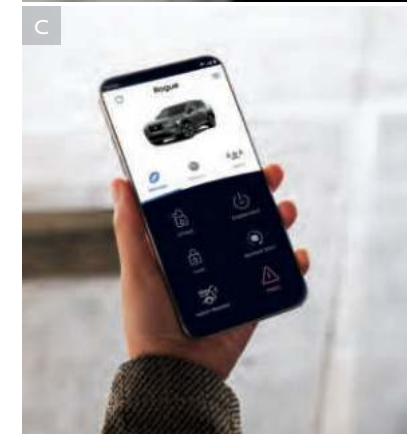
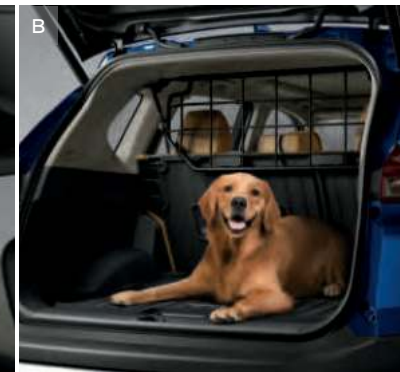
Right: **Nissan Rogue® Platinum AWD** shown in Caspian Blue Metallic with LED Fog Lights, Exterior Ground Lighting, Hood Wind Deflector, Side Window Deflectors, Splash Guards, Front Underbody Trim, Roof Rail Crossbars,^{1,9} Affiliated: Yakima® LoadWarrior — Cargo Basket,^{1,10} and optional equipment.

CHOOSE YOUR ACCESSORIES

- A. Dual Camera Drive Recorder^{32, 33}**
Keep a video record of your drive for extra confidence.
- B. Retractable Pet Divider**
Help keep your pet secure behind 2nd-row seats. (Also shown: Carpeted Cargo Area Protector and Seatback Protector)
- C. Virtual Key³⁴**
Lock or unlock the doors and share access to your Rogue with up to 7 people using an app on your compatible smartphone or watch.
- D. Illuminated Kick Plates**
For a grand entry, every time. (Also shown: Interior Accent Lighting and driver-side Carpeted Floor Mat)
- E. Retractable Cargo Cover**
Keep important items out of view. (Also shown: Chrome Rear Bumper Protector and Carpeted Cargo Area Protector)
- F. Tablet Holder³³**
Keep your tablet within easy reach.
- G. All-Season Floor Mats — High Wall Liners**
Stepping inside from the rain or snow? No problem.
- H. Trash Bin³³**
Keep things clean with this convenient spot for trash.

Additional Accessories:

- Rear USB Charging Ports
- Security Impact Sensor
- Wireless Smartphone Charger²
- Remote Engine Start²⁶
- Clear Hood Protector
- Frameless Auto-dimming Rearview Mirror w/ Universal Remote
- Cargo Blocks/Stabilizers¹
- Removable Tote Cargo Organizer
- Cargo Net
- Seat Cover w/ Storage
- And More



SPECIFICATIONS

Engine	S	SV	SL	PLT
1.5-liter DOHC 12-valve Variable Compression Turbo (VC-Turbo®) 3-cylinder engine	■	■	■	■
Horsepower — 201 hp @ 5,600 rpm				
Torque — 225 lb-ft @ 2,800 – 4,000 rpm				

Drivetrain	S	SV	SL	PLT
Front-Wheel Drive (FWD)	■	■	■	■
Intelligent All-Wheel Drive (AWD) with Drive Mode Dial ⁷	□	□	□	□
Xtronic CVT® (Continuously Variable Transmission) with Manual Mode	■	■	■	■
Electronic shifter	■	■	■	■
Paddle shifters	■	■	■	■
Eco and Sport Modes	■	■	■	■
Snow and Off-Road Modes	□	□	□	□

Brakes	S	SV	SL	PLT
Front and rear vented disc brakes	■	■	■	■
4-wheel Anti-lock Braking System (ABS)	■	■	■	■
Electronic Brake force Distribution (EBD)	■	■	■	■
Brake Assist ³⁵	■	■	■	■
Electronic parking brake	■	■	■	■

Suspension/Steering	S	SV	SL	PLT
Independent strut front suspension	■	■	■	■
Independent multi-link rear suspension	■	■	■	■
Front and rear stabilizer bars	■	■	■	■
Vehicle-speed-sensitive electric power steering	■	■	■	■

Driver Assistance Technologies	S	SV	SL	PLT
Cruise control	■			
ProPILOT Assist ²⁰		■		
ProPILOT Assist with Navi-link ²⁰			P2	■
Intelligent Forward Collision Warning ²²	■	■	■	■
Automatic Emergency Braking with Pedestrian Detection ¹⁵	■	■	■	■
Lane Departure Warning ¹⁹	■	■	■	■
Intelligent Lane Intervention ¹⁹	■	■	■	■
Blind Spot Warning ¹⁸	■	■	■	■
Intelligent Blind Spot Intervention ¹⁸		■	■	■
Rear Cross Traffic Alert ¹⁷	■	■	■	■
RearView Monitor ³⁶	■	■		
Intelligent Around View® Monitor ²⁷			■	■
Rear Sonar System ²⁸	■	■	■	
Front, Rear, and Side Sonar System ²⁸			P2	■
Rear Automatic Braking ¹⁶	■	■	■	■
High Beam Assist	■	■	■	■
Vehicle Dynamic Control (VDC) with Traction Control System (TCS) ³⁷	■	■	■	■
Intelligent Trace Control ³⁸	■	■	■	■
Active Ride Control	■	■	■	■
Hill start assist	■	■	■	■
Automatic Brake Hold	■	■	■	■
Intelligent Driver Alertness ²³	■	■	■	■
Traffic Sign Recognition ²⁹			P2	■

Wheels/Tires	S	SV	SL	PLT
17" Aluminum-alloy wheels	■			
18" Aluminum-alloy wheels		■		
18" Gloss black aluminum-alloy wheels		ME		
19" Aluminum-alloy wheels			■	■
P235/65R17 all-season tires	■			
P235/60R18 all-season tires		■		
P235/55R19 all-season tires			■	■

Exterior Features	S	SV	SL	PLT
Intelligent Auto Headlights	■	■	■	■
LED headlights with LED Daytime Running Lights	■	■	■	■
LED taillights	■	■	■	■
Black V-Motion grille		ME		
Black front and rear bumper trim pieces		ME		
Body-color outside mirrors		■	■	■
Black heated outside mirrors		ME		
Outside mirrors with LED turn signal indicators			■	■
Roof rails ¹		P1	■	■
Black roof rails ¹		ME		
Black rear diffuser	■	ME		
Power liftgate		P1	■	
Motion Activated Liftgate			P2	■
Satin black rear badging		ME		
Midnight Edition® badge		ME		
Dual Panel Panoramic Moonroof		P1	■	■
Rear privacy glass	■	■	■	■

Comfort/Convenience	S	SV	SL	PLT
Air conditioning	■			
Dual Zone Automatic Temperature Control		■		
Tri-Zone Automatic Temperature Control			P2	P3
In-cabin microfilter	■	■	■	■
Rear passenger vents	■	■	■	■
Rear Door Alert ²⁴	■	■	■	■
Rear door sunshades		P1	P2	■
Power windows with driver's one-touch auto-up/down feature	■	■	■	■
Power door locks with auto-locking feature	■	■	■	■
Remote keyless entry with push button ignition	■			
Nissan Intelligent Key® with Push Button Ignition and four-door request switch		■	■	■
Remote Engine Start System ²⁶ with Intelligent Climate Control		■	■	■
Tilt and telescoping steering column	■	■	■	■
Auto-dimming inside rearview mirror			■	■
Outside mirrors with reverse tilt-down feature			■	■
Interior accent lighting				■
Variable intermittent flat-blade windshield wipers	■	■	■	■
Intermittent rear window wiper	■	■	■	■
One 12-volt DC power outlet	■	■		
Two 12-volt DC power outlets			■	■
Sun visors with illuminated vanity mirrors		■	■	■
Divide-N-Hide® cargo system ¹			■	■

■ Standard
□ Optional
ME Part of Midnight Edition® Package
P1 Part of SV Premium Package
P2 Part of SL Premium Package
P3 Part of Platinum Premium Package

Seating/Appointments	S	SV	SL	PLT
6-way manual driver's seat	■			
8-way power driver's seat, with 2-way power lumbar support		■	■	■
4-way manual front-passenger's seat	■	■		
4-way power front-passenger's seat			■	■
Memory System — driver's seat and outside mirrors			■	■
60/40-split fold-down rear seat	■	■	■	■
Remote-folding rear seats				■
Cloth seat trim	■	■		
Prima-Tex™ leatherette-appointed seats		P1		
TailorFit™ leatherette-appointed seats		ME		
Leather-appointed seats			■	
Quilted semi-aniline leather-appointed seats				■
Leather-wrapped heated steering wheel		P1	■	■
Heated front seats		P1	■	■
Heated rear seats				P3

Infotainment	S	SV	SL	PLT
Advanced Drive-Assist™ Display ⁵	■	■	■	
12.3" Digital dashboard with fully digital gauges ⁵			P2	■
NissanConnect® 8" color touch-screen display ⁶	■	■	■	
NissanConnect® 9" color touch-screen display ⁶			P2	■
Nissan Door to Door Navigation with Premium Traffic ¹²			P2	■
Head-Up Display ⁴				P3
Voice Recognition ¹²	■	■	■	■
NissanConnect® Services powered by SiriusXM with trial access to 5-year Select and 6-month Premium packages ⁶		■	■	
NissanConnect® Services powered by SiriusXM with trial access to 5-year Select, 5-year Plus, and 6-month Premium packages ⁶			P2	■
Apple CarPlay® integration ⁶	■	■	■	■
Wireless Apple CarPlay® integration ⁶			P2	■
Android Auto™ compatibility ⁶	■	■	■	■
NissanConnect® with Wi-Fi Hotspot ⁶		■	■	■
SiriusXM Traffic and Travel Link with 3-month trial subscription ⁶			P2	■
Alexa Built-in ^{6, 30}			P2	■
Hands-free Text Messaging Assistant ¹¹	■	■	■	■
Bluetooth® Hands-free Phone System ⁶	■	■	■	■
AM/FM audio system with four speakers	■			
AM/FM audio system with six speakers		■	■	
Bose Premium Audio System, including dual-driver woofer			P2	■
One USB-A port and one USB-C port ²	■			
Two USB-A ports and two USB-C ports ²		■	■	■
Wireless charger ²				■
Streaming Audio via Bluetooth® ⁶	■	■	■	■
SiriusXM Radio with 3-month trial subscription included ⁶	■	■	■	■

Safety/Security	S	SV	SL	PLT
Nissan Advanced Air Bag System with dual-stage supplemental front air bags with seat belt and occupant-classification sensors ²⁵	■	■	■	■
Seat-mounted side-impact supplemental air bags for front- and rear-seat outboard occupants ²⁵	■	■	■	■

Safety/Security (continued)	S	SV	SL	PLT
Driver seat-mounted front-center supplemental air bags ²⁵				■
Driver and front-passenger supplemental knee air bags ²⁵	■	■	■	■
Roof-mounted curtain supplemental air bags with rollover sensor for outboard occupant head protection for all rows ²⁵	■	■	■	■
Front seat belts with double pretensioners and load limiters	■	■	■	■
LATCH System (Lower Anchors and Tethers for Children)	■	■	■	■
Zone Body construction with front and rear crumple zones and reinforced passenger compartment	■	■	■	■
Tire Pressure Monitoring System (TPMS) with Easy-Fill Tire Alert ^{39, 40}	■	■	■	■

CAPACITIES/WEIGHTS/MPG

Capacities	
Seating capacity	5
Interior passenger volume without moonroof (cu. ft.)	105.4
Interior passenger volume with moonroof (cu. ft.)	100.4
Maximum cargo capacity without moonroof (cu. ft.) ¹	36.5
Maximum cargo capacity with moonroof (cu. ft.) ¹	36.3
Fuel tank (gals.)	14.5

Curb Weights - Lbs.	S	SV	SL	Platinum
FWD	3,457	3,490	3,569	3,587
AWD	3,580	3,616	3,695	3,713

2023 Fuel Economy Estimates ⁹	S	SV	SL	Platinum
FWD	30/37/33	30/37/33	29/36/32	29/36/32
AWD	28/35/31	28/35/31	28/34/31	28/34/31

NISSAN ROADSIDE ASSISTANCE

Your peace of mind is on us. For 36 months or 36,000 miles, whichever comes first, your new Nissan is covered for the following:⁴¹

- Flat-tire changes
- Trip Interruption benefits
- Jump starts
- Vehicle lockouts
- Emergency fuel delivery

Follow Nissan on:



visit [NissanUSA.com/rogue](https://www.nissanusa.com/rogue)

PRINTED IN USA



Sign up to get the latest on
Nissan vehicles, news, and events.

<https://www.nissanusa.com/brochures/request-brochure.html>



Nissan Intelligent Mobility moves you one step ahead. In cars that feel like an extension of you, helping you see more and sense more, reacting with you, and sometimes even for you. Nissan Intelligent Mobility is about a better future – moving through life with greater confidence, excitement and connection to the world around you.

¹Cargo shown for display purposes only. Cargo and load capacity limited by weight and distribution. Always secure cargo. Heavy loading of the vehicle with cargo, especially on the roof, will affect the handling and stability of the vehicle. ²Driving is serious business and requires your full attention. If you have to use the connected device while driving, exercise extreme caution at all times so full attention may be given to vehicle operation. External device not included. ³Leather appointments. ⁴Do not use for extended periods of time. See Owner's Manual for important safety information. ⁵Information displayed is dependent on how vehicle is equipped. Driving is serious business and requires your full attention. If you have to use the feature while driving, exercise extreme caution at all times so full attention may be given to vehicle operation. ⁶Use feature only when safe and legal. Compatible device and service required. Subject to third party service availability. For more information, see NissanUSA.com/connect/legal. ⁷Intelligent All-Wheel Drive cannot prevent collisions or provide enhanced traction in all conditions. Always monitor traffic and weather conditions. ⁸2023 EPA Fuel Economy Estimates. 30 City MPG / 37 Highway MPG / 33 Combined MPG for Rogue S and SV FWD, 28 City MPG / 35 Highway MPG / 31 Combined MPG for Rogue S and SV AWD, 29 City MPG / 36 Highway MPG / 32 Combined MPG for Rogue SL and Platinum FWD, 28 City MPG / 34 Highway MPG / 31 Combined MPG for Rogue SL and Platinum AWD. Actual mileage may vary with driving conditions. Use for comparison only. ⁹Genuine Nissan Accessory Roof Rail Crossbars have a maximum weight limit of 100 lbs. ¹⁰All non-Nissan Genuine Accessories are not warranted by Nissan. Refer to accessory product manufacturer for warranty details. Nissan limited warranty also does not cover damages or failures to the vehicle caused by improper installation or alterations. Damage or failures caused by use of non-Nissan-affiliated parts/accessories are also excluded from Nissan warranty coverage. Read the new vehicle limited warranty information booklet or contact your dealer for details. ¹¹Use Hands Free Text Messaging when parked in a safe location. If you must use while driving, monitor traffic conditions and keep both hands on the steering wheel to prevent collisions. Compatible device required. Message and data rates may apply. ¹²Never program while driving. GPS mapping may not be detailed in all areas or reflect current road status. ¹³Nissan Safety Shield technologies can't prevent all collisions or warn in all situations. See Owner's Manual for important safety information. ¹⁴Availability of features vary by vehicle model year, model, trim level, packaging, and options. Please see Owner's Manual for important feature information. ¹⁵Automatic Emergency Braking with Pedestrian Detection cannot prevent all collisions and may not provide warning or braking in all conditions. Driver should monitor traffic conditions and brake as needed to prevent collisions. See Owner's Manual for safety information. ¹⁶Rear Automatic Braking cannot prevent all collisions and may not provide warning or braking in all conditions. Driver should always turn and check surroundings before driving and brake as needed to prevent collisions. See Owner's Manual for safety information. ¹⁷Rear Cross Traffic Alert may not detect all vehicles. See Owner's Manual for safety information. ¹⁸Blind Spot Warning and Intelligent Blind Spot Intervention cannot prevent collisions and may not detect every object or warn in all situations. Driver should always turn and look before changing lanes. See Owner's Manual for safety information. ¹⁹Lane Departure Warning and Intelligent Lane Intervention only operate when lane markings are able to be detected. See Owner's Manual for safety information. ²⁰ProPILOT Assist and ProPILOT Assist with Navi-link cannot prevent collisions. It is the driver's responsibility to be in control of the vehicle at all times. Always monitor traffic conditions and keep both hands on the steering wheel. System operates only when lane markings are detected. Does not function in all weather, traffic and road conditions. System has limited control capability and the driver may need to steer, brake or accelerate at any time to maintain safety. See Owner's Manual for safety information. ²¹Extra cost option. ²²Intelligent Forward Collision Warning cannot prevent collisions. See Owner's Manual for safety information. ²³Intelligent Driver Alertness cannot provide a warning in every situation. See Owner's Manual for safety information. ²⁴Rear Door Alert System does not detect people or cargo. Always check rear seat before exiting. See Owner's Manual for safety information. ²⁵Air bags are only a supplemental restraint system. Always wear your seat belt. Rear-facing child restraints should not be placed in the front-passenger's seat. All children 12 and under should ride in the rear seat properly secured in child restraints, booster seats, or seat belts according to their size. Air bags will only inflate in certain accidents. See Owner's Manual for safety information. ²⁶Remote Engine Start System to be used only in accordance with laws or rules in effect in your vehicle's location. ²⁷Intelligent Around View® Monitor cannot eliminate blind spots and may not detect every object. Driver should always turn and check surroundings before driving. See Owner's Manual for safety information. ²⁸Sonar System may not detect every object. Driver should always check surroundings before driving. See Owner's Manual for safety information. ²⁹Traffic Sign Recognition may not detect and read all traffic signs in all conditions. Driver should monitor all traffic signs and obey all traffic laws. See Owner's Manual for details. ³⁰Available feature shown. Compatible device and service required. Cloud-based service provided by Amazon Alexa Automotive services. Subject to third party service availability. Amazon, Alexa, and all related logos are trademarks of Amazon.com, Inc. or its affiliates. For more information, see NissanUSA.com/connect/legal. ³¹For complete information concerning warranty coverage, conditions, limitations, and exclusions, see your Nissan dealer and parts.NissanUSA.com for warranty details. ³²Dual Camera Drive Recorder to be used only in accordance with any laws or rules in effect in your vehicle's location that may apply to audio or video recordings of drivers and passengers. ³³Vehicle shown is for illustrative purposes only. Not representative of brochure's model year/model. ³⁴Compatible smartphone required. Virtual Key to be used only in accordance with laws or rules in effect in your vehicle's location. Actual maximum distance for operation will vary depending on obstructions between compatible device and vehicle. ³⁵Brake Assist cannot prevent all collisions and may not provide warning or braking in all conditions. Driver should monitor traffic conditions and brake as needed to prevent collisions. See Owner's Manual for safety information. ³⁶RearView Monitor may not detect every object and does not eliminate blind spots or warn of moving objects. See Owner's Manual for safety information. ³⁷Vehicle Dynamic Control cannot prevent collisions due to abrupt steering, carelessness, or dangerous driving techniques. It should remain on when driving, except when freeing the vehicle from mud or snow. See Owner's Manual for safety information. ³⁸Intelligent Trace Control cannot prevent collisions or loss of control. Driver should remain in control of vehicle at all times. See Owner's Manual for safety information. ³⁹Tire Pressure Monitoring System is not a substitute for regular tire pressure checks. See Owner's Manual for safety information. ⁴⁰Vehicle to be on for the Easy-Fill Tire Alert to operate. ⁴¹Roadside assistance coverage period varies by model-year model. For complete information concerning warranty coverage, conditions and exclusions, see your Nissan dealer and read the warranty information booklet for the model-year model. Amazon, Alexa and all related logos are trademarks of Amazon.com, Inc. or its affiliates. Apple CarPlay®, Apple Music®, and Siri® are registered trademarks of Apple, Inc. Bluetooth® word mark and logos are owned by Bluetooth SIG, Inc., and any use of such marks by Nissan is under license. Bose® is a registered trademark of The Bose Corporation. ChromaFlair® is a registered trademark of Optical Coating Laboratory, LLC. Google, Android, Google Play, Android Auto and other marks are trademarks of Google LLC. To use Android Auto on your car display, you'll need an Android phone running Android 6 or higher, an active data plan, and the Android Auto app. Facebook® is a registered trademark of Facebook, Inc. Instagram® is a registered trademark of Instagram, LLC. The Sirius®, XM®, and SiriusXM® names and all related marks and logos are trademarks of Sirius XM Radio Inc. All other trademarks are the property of their respective owners. Twitter® is a registered trademark of Twitter, Inc. Yakima® is a registered trademark of Yakima Products, Inc. This brochure is intended for general descriptive and informational purposes only. It is subject to change and does not constitute an offer, representation or warranty (express or implied) by Nissan North America, Inc. Interested parties should confirm the accuracy of any information in this brochure as it relates to a vehicle directly with Nissan North America, Inc., before relying on it to make a purchase decision. Nissan North America, Inc., reserves the right to make changes, at any time, without prior notice, in prices, colors, materials, equipment, specifications, and models and to discontinue models or equipment. Due to continuous product development and other pre- and post-production factors, actual vehicle, materials and specifications may vary from this brochure. Some vehicles shown with optional equipment. See the actual vehicle for complete accuracy. Availability and delivery times for particular models or equipment may vary. Specifications, options and accessories may differ in Hawaii, U.S. territories and other countries. For additional information on availability, options or accessories, see your Nissan dealer or contact Nissan North America, Inc. At NissanUSA.com, you'll find virtual product demonstrations, a way to "build your own Nissan," a dealer locator, and more information about key Nissan support services. Or if you'd prefer, call 1-800-NISSAN-3 for answers to specific questions about Rogue® or any other Nissan vehicle. The Nissan names, logos, product names, feature names, and slogans are trademarks owned by or licensed to Nissan Motor Co. Ltd. and/or its North American subsidiaries. Other trademarks and trade names are those of their respective owners. **Always wear your seat belt, and please drive responsibly.** ©2022 Nissan North America, Inc. *23 Rogue. 2310973-N-8/22-100K-KSL