



MURANO®

2023



You deserve a crossover designed to excite

Good is fitting in. Great is standing out. And Murano® does just that. Going way beyond eye candy to deliver all-season power and advanced technologies. This is a crossover that elevates the thrill like never before. This is Nissan Murano.





Available Heated and
Ventilated Front Seats

Available Semi-aniline
Leather Appointments

Available Dark Wood-
toned Finishes

Front and Rear
USB-C Ports¹

Nissan Murano[®] Platinum AWD shown in Cashmere Semi-aniline Leather.²



Design is in our DNA

It's what defines us, and inspires us. Beginning with available dark wood-toned finishes and semi-aniline leather-appointed seats. Every inch of style is illuminated by the available Dual Panel Panoramic Moonroof that lets in natural light with an expansive view to the sky above. And available rear heated seats and USB ports show your passengers in the back just how inspired great design can be!

Intelligent All-Wheel Drive

Murano's available Intelligent All-Wheel Drive adapts to changing conditions, helping you get an enhanced grip on the road. The system can automatically switch from 2-wheel to 4-wheel and back, for optimal fuel efficiency and confidence behind the wheel.^{3, 4}



Standard Nissan Safety Shield® 360

Imagine feeling confident in almost any situation. With a suite of six standard Safety Shield 360 technologies, the Nissan Murano helps look out for you all around. This is additional peace of mind you can enjoy with every 2023 Murano.^{8, 9}

Automatic Emergency Braking with Pedestrian Detection¹⁰

Rear Automatic Braking¹¹

Rear Cross Traffic Alert¹²

Blind Spot Warning¹³

Lane Departure Warning¹⁴

High Beam Assist

Seamless connectivity

People to see? Places to be? Just ask Siri. Equipped with Siri voice control, Apple CarPlay brings your contacts, favorite messaging apps, Apple Music playlists, Apple Maps, and more on board to your Murano. Simply plug in your compatible iPhone and go.^{1, 5, 6, 7}



Talk to Google on Android Auto™ and get things done with your voice. Easily send messages, get directions, control media, and more. Just say, "Hey Google" or, in compatible cars, long-press the voice control button on your steering wheel to get started.^{1, 5, 6, 7}



Motion Activated Liftgate

Hands full? Just kick under the rear bumper to open the available Motion Activated Liftgate, without reaching for a key or juggling whatever you're carrying.¹⁵

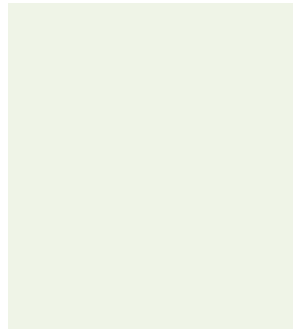


Intelligent Around View® Monitor

Keep your pride and rims intact. The available Intelligent Around View Monitor makes parking easy with a virtual composite 360° bird's-eye view of your Murano. You can select from split-screen close-ups of the front, rear, and curbside views for a better look. It also gives you an on-screen warning when it detects moving objects near your vehicle. We're looking at you, shopping cart.^{16, 17}



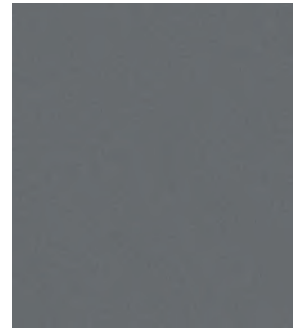
CHOOSE YOUR COLOR



Pearl White TriCoat¹⁸



Brilliant Silver Metallic



Gun Metallic



Boulder Gray Pearl¹⁸

	S	SV	ME	SL	PLT
Graphite Cloth	<input checked="" type="checkbox"/>				
Graphite Leatherette		<input checked="" type="checkbox"/>	<input checked="" type="checkbox"/>		
Cashmere Leatherette		<input checked="" type="checkbox"/>			
Graphite Leather ²				<input checked="" type="checkbox"/>	
Cashmere Leather ²				<input checked="" type="checkbox"/>	
Mocha Semi-aniline Leather ²					<input checked="" type="checkbox"/>
Graphite Semi-aniline Leather ²					<input checked="" type="checkbox"/>
Cashmere Semi-aniline Leather ²					<input checked="" type="checkbox"/>

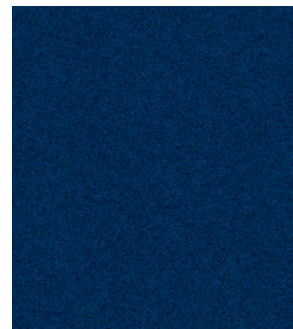
	S	SV	ME	SL	PLT
Graphite Cloth	<input checked="" type="checkbox"/>				
Graphite Leatherette		<input checked="" type="checkbox"/>			
Cashmere Leatherette					
Graphite Leather ²				<input checked="" type="checkbox"/>	
Cashmere Leather ²				<input checked="" type="checkbox"/>	
Mocha Semi-aniline Leather ²					<input checked="" type="checkbox"/>
Graphite Semi-aniline Leather ²					<input checked="" type="checkbox"/>
Cashmere Semi-aniline Leather ²					<input checked="" type="checkbox"/>

	S	SV	ME	SL	PLT
Graphite Cloth	<input checked="" type="checkbox"/>				
Graphite Leatherette		<input checked="" type="checkbox"/>			
Cashmere Leatherette					
Graphite Leather ²				<input checked="" type="checkbox"/>	
Cashmere Leather ²				<input checked="" type="checkbox"/>	
Mocha Semi-aniline Leather ²					<input checked="" type="checkbox"/>
Graphite Semi-aniline Leather ²					<input checked="" type="checkbox"/>
Cashmere Semi-aniline Leather ²					<input checked="" type="checkbox"/>

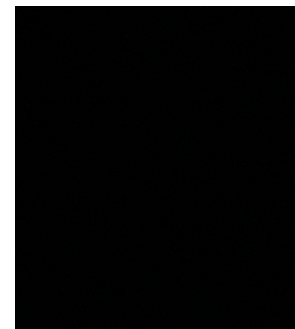
	S	SV	ME	SL	PLT
Graphite Cloth	<input checked="" type="checkbox"/>				
Graphite Leatherette		<input checked="" type="checkbox"/>			
Cashmere Leatherette					
Graphite Leather ²				<input checked="" type="checkbox"/>	
Cashmere Leather ²				<input checked="" type="checkbox"/>	
Mocha Semi-aniline Leather ²					<input checked="" type="checkbox"/>
Graphite Semi-aniline Leather ²					<input checked="" type="checkbox"/>
Cashmere Semi-aniline Leather ²					<input checked="" type="checkbox"/>



Scarlet Ember Tintcoat¹⁸



Deep Ocean Blue Metallic



Super Black

	S	SV	ME	SL	PLT
Graphite Cloth	<input checked="" type="checkbox"/>				
Graphite Leatherette		<input checked="" type="checkbox"/>			
Cashmere Leatherette		<input checked="" type="checkbox"/>			
Graphite Leather ²				<input checked="" type="checkbox"/>	
Cashmere Leather ²				<input checked="" type="checkbox"/>	
Mocha Semi-aniline Leather ²					<input checked="" type="checkbox"/>
Graphite Semi-aniline Leather ²					<input checked="" type="checkbox"/>
Cashmere Semi-aniline Leather ²					<input checked="" type="checkbox"/>

	S	SV	ME	SL	PLT
Graphite Cloth	<input checked="" type="checkbox"/>				
Graphite Leatherette		<input checked="" type="checkbox"/>			
Cashmere Leatherette		<input checked="" type="checkbox"/>			
Graphite Leather ²				<input checked="" type="checkbox"/>	
Cashmere Leather ²				<input checked="" type="checkbox"/>	
Mocha Semi-aniline Leather ²					<input checked="" type="checkbox"/>
Graphite Semi-aniline Leather ²					<input checked="" type="checkbox"/>
Cashmere Semi-aniline Leather ²					<input checked="" type="checkbox"/>

	S	SV	ME	SL	PLT
Graphite Cloth	<input checked="" type="checkbox"/>				
Graphite Leatherette		<input checked="" type="checkbox"/>			
Cashmere Leatherette		<input checked="" type="checkbox"/>			
Graphite Leather ²				<input checked="" type="checkbox"/>	
Cashmere Leather ²				<input checked="" type="checkbox"/>	
Mocha Semi-aniline Leather ²					<input checked="" type="checkbox"/>
Graphite Semi-aniline Leather ²					<input checked="" type="checkbox"/>
Cashmere Semi-aniline Leather ²					<input checked="" type="checkbox"/>

	S	SV	ME	SL	PLT
Graphite Cloth	<input checked="" type="checkbox"/>				
Graphite Leatherette		<input checked="" type="checkbox"/>	<input checked="" type="checkbox"/>		
Cashmere Leatherette		<input checked="" type="checkbox"/>			
Graphite Leather ²				<input checked="" type="checkbox"/>	
Cashmere Leather ²				<input checked="" type="checkbox"/>	
Mocha Semi-aniline Leather ²					<input checked="" type="checkbox"/>
Graphite Semi-aniline Leather ²					<input checked="" type="checkbox"/>
Cashmere Semi-aniline Leather ²					<input checked="" type="checkbox"/>

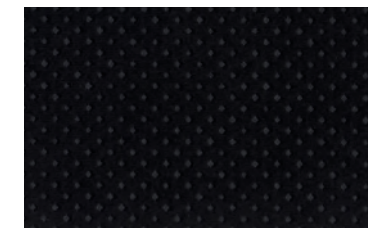
Standard
 Optional

Nissan has taken care to ensure that the color swatches presented here are the closest possible representations of actual vehicle colors. Swatches may vary slightly due to the printing process and whether viewed in daylight, fluorescent or incandescent light. Please see the actual colors at your dealer.

CHOOSE YOUR INTERIOR



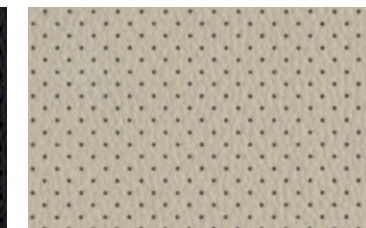
Nissan Murano[®] Platinum AWD shown in Cashmere Semi-aniline Leather.²



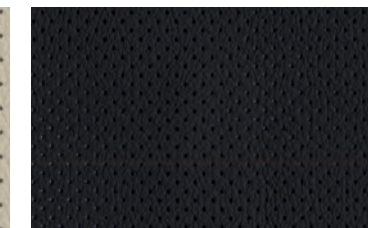
Graphite Cloth
S



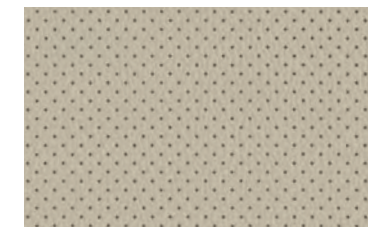
Graphite Leatherette
SV | Midnight Edition[®]



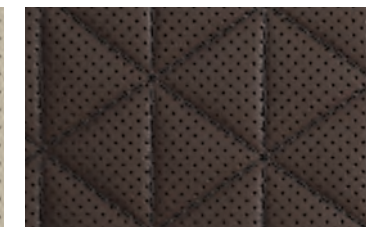
Cashmere Leatherette
SV



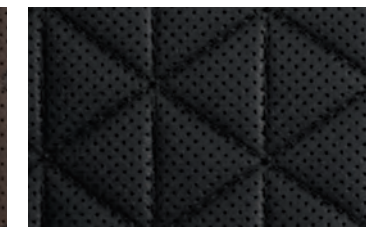
Graphite Leather²
SL



Cashmere Leather²
SL



Mocha Semi-aniline Leather²
Platinum



Graphite Semi-aniline Leather²
Platinum



Cashmere Semi-aniline Leather²
Platinum

CHOOSE YOUR TRIM LEVEL

S

260-hp, 3.5-liter V6 engine, Xtronic CVT® (Continuously Variable Transmission), Front-Wheel Drive, Intelligent Forward Collision Warning,¹⁹ Automatic Emergency Braking with Pedestrian Detection,¹⁰ Intelligent Lane Intervention,¹⁴ Blind Spot Warning,¹³ Rear Cross Traffic Alert,¹² RearView Monitor,²⁰ Rear Sonar System,²¹ Rear Automatic Braking,¹¹ Vehicle Dynamic Control (VDC) with Traction Control System (TCS),²² Active Brake Limited Slip (ABLS), Hill start assist, High Beam Assist, Intelligent Driver Alertness,²³ 18" Machine-finished aluminum-alloy wheels, LED headlights with LED signature Daytime Running Lights, Automatic on/off headlights, LED taillights, Chrome door handles, Active Grille Shutters, Rear Door Alert,²⁴ Dual Zone Automatic Temperature Control with in-cabin microfilter, Rear passenger air conditioning vents, Steering wheel-mounted cruise control, Nissan Intelligent Key® with Push Button Ignition, Remote front windows down, Tilt and telescoping steering column, Vehicle-speed-sensing variable intermittent windshield wipers, Intermittent rear window wiper, Two 12-volt DC power outlets, Eight cargo area tie-down hooks and rings,¹⁵ 6-way manual driver's seat, 4-way manual front-passenger's seat, 60/40-split fold-down rear seatbacks with cargo area-accessible levers, Reclining rear seatbacks with center armrest,²⁵ Cloth seat trim, 7" Advanced Drive-Assist™ Display,²⁶ NissanConnect® 8" color display with multi-touch control,⁵ Apple CarPlay® integration,⁵ Android Auto™ compatibility,⁵ Hands-free Text Messaging Assistant,⁶ Bluetooth® Hands-free Phone System,⁵ AM/FM/CD audio system with six speakers, Streaming Audio via Bluetooth,^{9,5} Auxiliary audio input jack,¹ Two USB-A ports and two USB-C ports,¹ SiriusXM Radio with 3-month trial subscription,⁵ Nissan Advanced Air Bag System,²⁷ Rear Seat Belt Reminder



PLATINUM INCLUDES SL EQUIPMENT PLUS:

Distinctive 20" dark hyper silver aluminum-alloy wheels, Dual Panel Panoramic Moonroof, Power-tilt and power-telescoping steering column with memory position, Climate-controlled front seats (heated and cooled), Semi-aniline leather-appointed seats with diamond-quilted inserts, Smooth leather-wrapped steering wheel, Contrast micro-piping for seat, door, and console inserts, NissanConnect® Services powered by SiriusXM with trial access to 3-year Select and 6-month Premium Plus packages⁵



SV INCLUDES S EQUIPMENT PLUS:

Intelligent Cruise Control,²⁸ Front and Rear Sonar System,²¹ LED fog lights, Black roof rails,¹⁵ Power heated outside mirrors with LED turn signal indicators, Remote Engine Start System with Intelligent Climate Control,²⁹ Auto-dimming rearview mirror, 10-way power driver's seat including 2-way power lumbar support, 4-way power front-passenger's seat, Heated front seats, Leatherette seats, Leather-wrapped steering wheel and shift knob

AVAILABLE PACKAGE:

Midnight Edition® Package



CHOOSE YOUR PACKAGE

MIDNIGHT EDITION® SV

20" Black aluminum-alloy wheels, Black outside mirrors, Black roof rails,¹⁵ Black V-Motion grille, Black front and rear lower bumper accents, Black body side molding, Black exterior badges, Black License Plate Finisher, Splash guards, Illuminated kick plates



SL INCLUDES SV EQUIPMENT PLUS:

Intelligent Around View® Monitor,¹⁶ Traffic Sign Recognition,³⁰ 20" Machine-finished aluminum-alloy wheels, Silver roof rails,¹⁵ Power heated outside mirrors with LED turn signal indicators and reverse tilt-down feature, Motion Activated Liftgate,¹⁵ Driver's seat and outside mirrors position memory, HomeLink® Universal Transceiver, Adjustable ambient LED interior lighting, Heated front and rear outboard seats, Leather-appointed seats, Heated steering wheel, Nissan Door to Door Navigation with Premium Traffic,⁷ SiriusXM Traffic and Travel Link with 3-month trial access,⁵ Bose Premium Audio System with 11 speakers, including dual subwoofers

AVAILABLE PACKAGE:

Moonroof Package



MOONROOF PACKAGE SL

Dual Panel Panoramic Moonroof



NISSAN MURANO® ACCESSORIES

Turn brand-new into all you

Every Genuine Nissan Accessory is custom-fit, custom-designed, and durability-tested. Each one is backed by Nissan's 3-year/36,000-mile (whichever occurs first) limited warranty (if installed by dealer at the time of new vehicle purchase) and can be financed when installed by dealer at time of new vehicle purchase.³¹ Affiliated Yakima® accessories are not warranted by Nissan. Refer to product manufacturer for warranty details. Nissan Limited Warranty does not cover damages or failures to the vehicle caused by improper installation or alterations of any Nissan-approved accessory or component. Contact your dealer/retailer for details.³²

For more information and to shop online for Murano® Genuine Nissan Accessories, go to bit.ly/23Murano-Accys

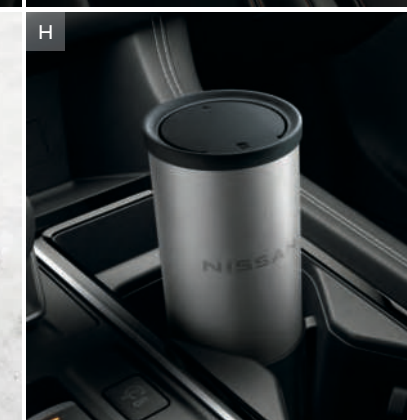
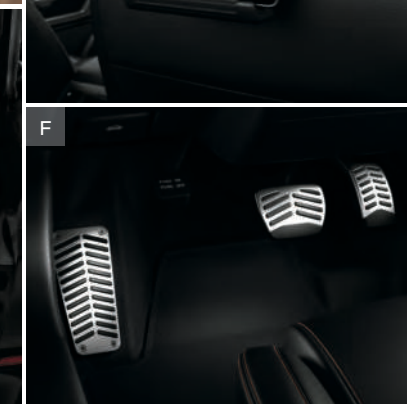
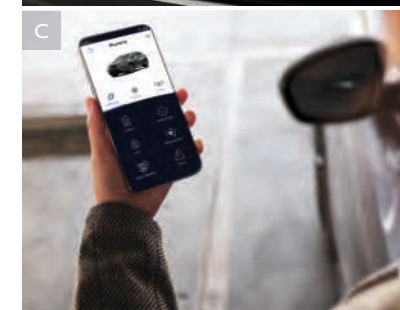
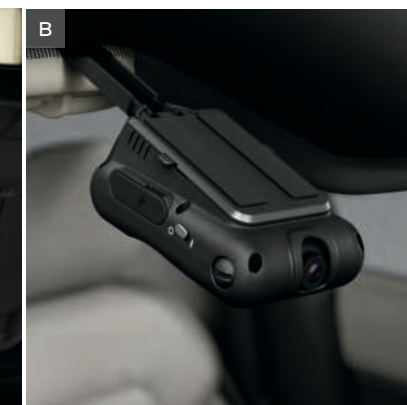


Nissan Murano® SL AWD shown in Super Black with 20" Dark Charcoal Aluminum Alloy Wheels, Roof Rail Crossbars,^{15,33} Chrome Rear Bumper Protector, Rear Underbody Trim, Splash Guards (4-piece set), Exterior Ground Lighting, Tow Hitch Receiver Kit, Class I,³⁴ and Hitch Ball, Class II.³⁴

- A. Retractable Cargo Cover and Carpeted Cargo Area Protector**
Keep it covered and keep it protected. (Sold separately)
- B. Dual Camera Drive Recorder^{35, 36}**
Protect yourself and your Murano® Dual cameras capture what is in front of the vehicle, as well as inside the cabin.
- C. Virtual Key³⁷**
Lock, unlock, and start your vehicle using an app on your compatible smartphone and even send a shared key virtually.
- D. Tablet Holder³⁶**
Keep your tablet secure and within easy reach.
- E. Retractable Pet Divider**
Keep your pet secure behind 2nd-row seats.
- F. Sport Pedals³⁶**
Step up your style with added grip and a track-inspired look.
- G. All-Season Floor Mats (4-piece set)**
No rain, sleet, or snow will muck up your Murano.
- H. Trash Bin**
Helps keep your trash off the floor and seats.

Additional Accessories:

- Carpeted Floor Mats (4-piece set)
- Remote Engine Start²⁹
- Removable Tote Cargo Organizer
- Cargo Net
- Hatch Tent
- Security Impact Sensor
- Wheel Locks
- Clear Rear Bumper Protector
- Interior Accent Lighting
- 20" Satin Black Aluminum Alloy Wheels
- 20" Black Aluminum Alloy Wheels
- Illuminated Kick Plates
- Frameless Auto-dimming Rearview Mirror w/ Universal Remote
- All-Season Cargo Area Protector
- Affiliated: Yakima® SkyBox 16 – Roof Cargo Box^{15, 32}
- Affiliated: Yakima® FatCat EVO 6 - Ski Carrier^{15, 32}
- Affiliated: Yakima® JayLow – Kayak Carrier^{15, 32}
- Affiliated: Yakima® FrontLoader – Upright Bike Rack^{15, 32}
- Affiliated: Yakima® ForkLift - Fork Mounted Bike Rack^{15, 32}
- And More



SPECIFICATIONS

Engine	S	SV	SL	PLT
3.5-liter DOHC 24-valve V6 engine	■	■	■	■
Horsepower — 260 hp @ 6,000 rpm	■	■	■	■
Torque — 240 lb-ft @ 4,400 rpm	■	■	■	■
Continuously Variable Valve Timing Control System (CVTCS) on intake valves	■	■	■	■
Variable induction system	■	■	■	■
Nissan Direct Ignition System	■	■	■	■
Double-tipped iridium spark plugs	■	■	■	■
Electronic drive-by-wire throttle	■	■	■	■

Drivetrain	S	SV	SL	PLT
Front-Wheel Drive (FWD)	■	■	■	■
Intelligent All-Wheel Drive (AWD) ³	□	□	□	□
Xtronic CVT® (Continuously Variable Transmission)	■	■	■	■

Brakes	S	SV	SL	PLT
4-wheel vented disc brakes	■	■	■	■
4-wheel Anti-lock Braking System (ABS) — G-sensor on AWD models	■	■	■	■
Electronic Brake force Distribution (EBD)	■	■	■	■
Brake Assist ²⁸	■	■	■	■

Suspension/Chassis Bracing/Steering	S	SV	SL	PLT
Independent strut front suspension	■	■	■	■
Multi-link independent rear suspension	■	■	■	■
Front and rear stabilizer bars	■	■	■	■
Vehicle-speed-sensitive power steering	■	■	■	■

Driver Assistance Technologies	S	SV	SL	PLT
Cruise Control	■			
Intelligent Cruise Control ²⁸		■	■	■
Intelligent Forward Collision Warning ¹⁹	■	■	■	■
Automatic Emergency Braking with Pedestrian Detection ¹⁰	■	■	■	■
Intelligent Lane Intervention ¹⁴	■		■	■
Blind Spot Warning ¹³	■	■	■	■
Rear Cross Traffic Alert ¹²	■	■	■	■
RearView Monitor ²⁰	■	■		
Intelligent Around View® Monitor ¹⁶			■	■
Rear Sonar System ²¹	■			
Front and Rear Sonar System ²¹		■	■	■
Rear Automatic Braking ¹¹	■	■	■	■
Vehicle Dynamic Control (VDC) with Traction Control System (TCS) ²²	■	■	■	■
Active Brake Limited Slip (ABLS)	■	■	■	■
Hill start assist	■	■	■	■
High Beam Assist	■	■	■	■
Traffic Sign Recognition ³⁰			■	■
Intelligent Driver Alertness ²³	■	■	■	■

Wheels/Tires	S	SV	SL	PLT
18" Machine-finished aluminum-alloy wheels	■	■		
20" Black aluminum-alloy wheels		M		
20" Machine-finished aluminum-alloy wheels			■	

Wheels/Tires (continued)	S	SV	SL	PLT
Distinctive 20" dark hyper silver aluminum-alloy wheels				■
P235/65R18 All-season tires	■	■		
P235/55R20 All-season tires		M	■	■

Exterior Features	S	SV	SL	PLT
LED headlights with LED signature Daytime Running Lights	■	■	■	■
Automatic on/off headlights	■	■	■	■
LED fog lights		■	■	■
LED taillights	■	■	■	■
Black roof rails ¹⁵		■		
Silver roof rails ¹⁵			■	■
Dual Panel Panoramic Moonroof			S	■
Chrome door handles	■	■	■	■
Black outside mirrors		M		
Black V-Motion grille		M		
Black front and rear lower bumper accents		M		
Black body side molding		M		
Black exterior badges		M		
Black License Plate Finisher		M		
Splash guards		M		
Illuminated kick plates		M		
Power outside mirrors	■			
Power heated outside mirrors with LED turn signal indicators		■		
Power heated outside mirrors with LED turn signal indicators and reverse tilt-down feature			■	■
Active Grille Shutters	■	■	■	■
Motion Activated Liftgate			■	■

Comfort/Convenience	S	SV	SL	PLT
Rear Door Alert ²⁴	■	■	■	■
Dual Zone Automatic Temperature Control with in-cabin microfilter	■	■	■	■
Rear passenger air conditioning vents	■	■	■	■
HomeLink® Universal Transceiver			■	■
Driver's seat and outside mirrors position memory			■	■
Steering-wheel position memory				■
Steering wheel-mounted cruise control	■	■	■	■
Nissan Intelligent Key® with Push Button Ignition	■	■	■	■
Remote Engine Start System with Intelligent Climate Control ²⁹			■	■
Remote front windows down	■	■	■	■
Tilt and telescoping steering column	■	■	■	
Power-tilt and power-telescoping steering column				■
Vehicle-speed-sensing variable intermittent windshield wipers	■	■	■	■
Intermittent rear window wiper	■	■	■	■
Auto-dimming rearview mirror			■	■
Two 12-volt DC power outlets			■	■
Adjustable ambient LED interior lighting			■	■
Eight cargo area tie-down hooks and rings ¹⁵	■	■	■	■
Rear Seat Belt Reminder	■	■	■	■
6-way manual driver's seat	■			

Seating/Appointments	S	SV	SL	PLT
10-way power driver's seat, including 2-way power lumbar support		■	■	■
4-way manual front-passenger's seat	■			
4-way power front-passenger's seat		■	■	■
Heated front seats		■	■	
Climate-controlled front seats (heated and cooled)				■
Heated rear outboard seats			■	■
60/40-split fold-down rear seatbacks with cargo area-accessible levers	■	■	■	■
Reclining rear seatbacks with center armrest ²⁵	■	■	■	■
Cloth-wrapped A-pillar			■	■
Cloth seat trim	■			
Leatherette seats		■		
Leather-appointed seats			■	
Semi-aniline leather-appointed seats with diamond-quilted inserts				■
Leather-wrapped steering wheel		■	■	
Leather-wrapped shift knob		■	■	■
Smooth leather-wrapped steering wheel				■
Heated steering wheel			■	■

Infotainment	S	SV	SL	PLT
7" Advanced Drive-Assist™ Display ²⁶	■	■	■	■
NissanConnect® 8" color display with multi-touch control ⁵	■	■	■	■
Nissan Door to Door Navigation with Premium Traffic ⁷			■	■
SiriusXM Traffic and Travel Link with 3-month trial access ⁵			■	■
NissanConnect® Services powered by SiriusXM with trial access to 3-year Select and 6-month Premium Plus packages ⁵				■
Apple CarPlay® integration ⁵	■	■	■	■
Android Auto™ compatibility ⁵	■	■	■	■
Hands-free Text Messaging Assistant ⁶	■	■	■	■
Bluetooth® Hands-free Phone System ⁵	■	■	■	■
AM/FM/CD audio system with six speakers	■	■		
Bose Premium Audio System with 11 speakers, including dual subwoofers			■	■
Streaming Audio via Bluetooth® ⁵	■	■	■	■
Auxiliary audio input jack ¹	■	■	■	■
Two USB-A ports and two USB-C ports ¹	■	■	■	■

Safety/Security	S	SV	SL	PLT
Nissan Advanced Air Bag System with dual-stage supplemental front air bags with seat-belt and occupant-classification sensors ²⁷	■	■	■	■
Seat-mounted side-impact supplemental air bags for front- and rear-seat outboard occupants ²⁷	■	■	■	■
Roof-mounted curtain supplemental air bags with rollover sensor for side-impact and rollover head protection for front and rear-seat outboard occupants ²⁷	■	■	■	■
Driver and front-passenger supplemental knee air bag ²⁷	■	■	■	■
LATCH System (Lower Anchors and Tethers for CHildren)	■	■	■	■
Tire Pressure Monitoring System (TPMS) with individual tire pressure display and Easy-Fill Tire Alert ^{39, 40}	■	■	■	■

DIMENSIONS/CAPACITIES/MPG

Exterior Dimensions – Inches	
Wheelbase	111.2
Overall length	192.4
Overall width/height	75.4/67.8
Track width (front/rear)	64.6

Interior Dimensions (front/rear) – Inches	
Head room	39.9/39.8
Head room with Dual Panel Panoramic Moonroof	38.1/37.8
Leg room	40.5/38.7
Hip room	55.4/55.2
Shoulder room	59.5/58.9
Step-in height	15.8/15.1

Capacities	
Seating capacity	5
Interior passenger volume (front/rear)	
Without moonroof	55.7/52.4
With moonroof	53.1/49.7
Cargo volume with rear seat up (cu. ft.) ¹⁵	
Without moonroof/with moonroof	32.1/31.1
Cargo volume with rear seat down (cu. ft.) ¹⁵	
Without moonroof/with moonroof	67.0/65.0
Fuel tank (gals.)	19.0

Curb Weights – Lbs.				
Base Total	S	SV	SL	PLT
FWD	3864.6	3892.1	3926.3	4020.7
AWD	4009.2	4036.7	4070.9	4165.3

2023 EPA Fuel Economy Estimates ⁴				
City/Highway/Combined MPG				
FWD	20/28/23			
AWD	20/28/23			

NISSAN ROADSIDE ASSISTANCE

Your peace of mind is on us. For 36 months or 36,000 miles, whichever comes first, your new Nissan is covered for the following:⁴¹

- Flat-tire changes
- Trip Interruption benefits
- Jump starts
- Vehicle lockouts
- Emergency fuel delivery

Follow Nissan on:



visit [NissanUSA.com/murano](https://www.nissanusa.com/murano)
PRINTED IN USA



Sign up to get the latest on
Nissan vehicles, news, and events.

<https://www.nissanusa.com/brochures/request-brochure.html>



Nissan Intelligent Mobility moves you one step ahead. In cars that feel like an extension of you, helping you see more and sense more, reacting with you, and sometimes even for you. Nissan Intelligent Mobility is about a better future – moving through life with greater confidence, excitement and connection to the world around you.

¹Driving is serious business and requires your full attention. If you have to use the connected device while driving, exercise extreme caution at all times so full attention may be given to vehicle operation. ²Leather appointments. ³Intelligent All-Wheel Drive cannot prevent collisions or provide enhanced traction in all conditions. Always monitor traffic and weather conditions. ⁴2023 EPA Fuel Economy Estimates. ²⁰City MPG / ²⁸Highway MPG / ²³Combined MPG for Murano. Actual mileage may vary with driving conditions. Use for comparison only. ⁵Use feature only when safe and legal. Compatible device and service required. Subject to third party service availability. For more information, see [NissanUSA.com/connect/legal](https://www.nissanusa.com/connect/legal). ⁶Use Hands Free Text Messaging when parked in a safe location. If you must use while driving, monitor traffic conditions and keep both hands on the steering wheel to prevent collisions. Compatible device required. Message and data rates may apply. ⁷Never program while driving. GPS mapping may not be detailed in all areas or reflect current road status. ⁸Availability of features vary by vehicle model year, model, trim level, packaging, and options. Please see Owner's Manual for important feature information. ⁹Nissan Safety Shield technologies can't prevent all collisions or warn in all situations. See Owner's Manual for important safety information. ¹⁰Automatic Emergency Braking with Pedestrian Detection cannot prevent all collisions and may not provide warning or braking in all conditions. Driver should monitor traffic conditions and brake as needed to prevent collisions. See Owner's Manual for safety information. ¹¹Rear Automatic Braking cannot prevent all collisions and may not provide warning or braking in all conditions. Driver should always turn and check surroundings before driving and brake as needed to prevent collisions. See Owner's Manual for safety information. ¹²Rear Cross Traffic Alert may not detect all vehicles. See Owner's Manual for safety information. ¹³Blind Spot Warning cannot prevent collisions and may not detect every object or warn in all situations. Driver should always turn and look before changing lanes. See Owner's Manual for safety information. ¹⁴Lane Departure Warning and Intelligent Lane Intervention only operate when lane markings are detectable. See Owner's Manual for safety information. ¹⁵Cargo shown for display purposes only. Cargo and load capacity limited by weight and distribution. Always secure cargo. Heavy loading of the vehicle with cargo, especially on the roof, will affect the handling and stability of the vehicle. ¹⁶Intelligent Around View[®] Monitor cannot eliminate blind spots and may not detect every object. Driver should always turn and check surroundings before driving. See Owner's Manual for safety information. ¹⁷Virtual composite 360[°] view. ¹⁸Extra cost option. ¹⁹Intelligent Forward Collision Warning cannot prevent collisions. See Owner's Manual for safety information. ²⁰RearView Monitor may not detect every object and does not eliminate blind spots or warn of moving objects. See Owner's Manual for safety information. ²¹Sonar System may not detect every object. Driver should always check surroundings before driving. See Owner's Manual for safety information. ²²Vehicle Dynamic Control cannot prevent collisions due to abrupt steering, carelessness, or dangerous driving techniques. It should remain on when driving, except when freeing the vehicle from mud or snow. See Owner's Manual for safety information. ²³Intelligent Driver Alertness cannot provide a warning in every situation. See Owner's Manual for safety information. ²⁴Rear Door Alert System does not detect people or cargo. Always check rear seat before exiting. See Owner's Manual for safety information. ²⁵Do not ride in a moving vehicle when the seatback is reclined. For the most effective protection, the seat should be upright. See Owner's Manual for safety information. ²⁶Information displayed is dependent on how vehicle is equipped. Driving is serious business and requires your full attention. If you have to use the feature while driving, exercise extreme caution at all times so full attention may be given to vehicle operation. ²⁷Air bags are only a supplemental restraint system. Always wear your seat belt. Rear-facing child restraints should not be placed in the front-passenger's seat. All children 12 and under should ride in the rear seat properly secured in child restraints, booster seats, or seat belts according to their size. Air bags will only inflate in certain accidents. See Owner's Manual for safety information. ²⁸Intelligent Cruise Control uses limited braking and is not a collision avoidance or warning system. Driver should monitor traffic conditions and brake as needed to prevent collisions. See Owner's Manual for safety information. ²⁹Remote Engine Start System to be used only in accordance with any laws or rules in effect in your vehicle's location. ³⁰Traffic Sign Recognition may not detect and read all traffic signs in all conditions. Driver should monitor all traffic signs and obey all traffic laws. See Owner's Manual for details. ³¹For complete information concerning warranty coverage, conditions, limitations, and exclusions, see your Nissan dealer and [parts.nissanusa.com](https://www.nissanusa.com/parts) for warranty details. ³²All non-Nissan Genuine Accessories are not warranted by Nissan. Refer to accessory product manufacturer for warranty details. Nissan limited warranty also does not cover damages or failures to the vehicle caused by improper installation or alterations. Damage or failures caused by use of non-Nissan-affiliated parts/accessories are also excluded from Nissan warranty coverage. Read the new vehicle limited warranty information booklet or contact your dealer for details. ³³Genuine Nissan Accessory Roof Rail Crossbars have a maximum weight limit of 100 lbs. ³⁴Towing varies by configuration. See Nissan Towing Guide and Owner's Manual for additional information. Always secure cargo. ³⁵Dual Camera Drive Recorder to be used only in accordance with any laws or rules in effect in your vehicle's location that may apply to audio or video recordings of drivers and passengers. ³⁶Vehicle shown is for illustrative purposes only. Not representative of brochure's model year/model. ³⁷Compatible smartphone required. Virtual Key to be used only in accordance with laws or rules in effect in your vehicle's location. Actual maximum distance for operation will vary depending on obstructions between compatible device and vehicle. ³⁸Brake Assist cannot prevent all collisions and may not provide warning or braking in all conditions. Driver should monitor traffic conditions and brake as needed to prevent collisions. See Owner's Manual for safety information. ³⁹Tire Pressure Monitoring System is not a substitute for regular tire pressure checks. See Owner's Manual for safety information. ⁴⁰Vehicle must be on for the Easy-Fill Tire Alert to operate. ⁴¹Roadside assistance coverage period varies by model-year model. For complete information concerning warranty coverage, conditions and exclusions, see your Nissan dealer and read the warranty information booklet for the model-year model. Google, Android, Google Play, Android Auto, and other marks are trademarks of Google LLC. Google Assistant is not available in certain languages and countries. To use Android Auto on your car display, you'll need an Android phone running Android 6 or higher, an active data plan, and the Android Auto app. Apple CarPlay[®] and Apple Music[®] are registered trademarks of Apple, Inc. Bluetooth[®] word mark and logos are owned by Bluetooth SIG, Inc., and any use of such marks by Nissan is under license. Bose[®] is a registered trademark of The Bose Corporation. Facebook[®] is a registered trademark of Facebook, Inc. HomeLink[®] is a registered trademark of Gentex Corporation. Instagram[®] is a registered trademark of Instagram, LLC. iPhone[®] is a registered trademark of Apple, Inc. All rights reserved. iPhone[®] or other external device not included. Siri[®] and Siri[®] Eyes Free are registered trademarks of Apple, Inc. The Sirius[®], XM[®], and SiriusXM[®] names and all related marks and logos are trademarks of Sirius XM Radio Inc. Twitter[®] is a registered trademark of Twitter, Inc. Yakima[®] is a registered trademark of Yakima Products, Inc. YouTube[®] is a registered trademark of Google LLC. This brochure is intended for general descriptive and informational purposes only. It is subject to change and does not constitute an offer, representation or warranty (express or implied) by Nissan North America, Inc. Interested parties should confirm the accuracy of any information in this brochure as it relates to a vehicle directly with Nissan North America, Inc., before relying on it to make a purchase decision. Nissan North America, Inc., reserves the right to make changes, at any time, without prior notice, in prices, colors, materials, equipment, specifications, and models and to discontinue models or equipment. Due to continuous product development and other pre- and post-production factors, actual vehicle, materials and specifications may vary from this brochure. Some vehicles shown with optional equipment. See the actual vehicle for complete accuracy. Availability and delivery times for particular models or equipment may vary. Specifications, options and accessories may differ in Hawaii, U.S. territories and other countries. For additional information on availability, options or accessories, see your Nissan dealer or contact Nissan North America, Inc. At [NissanUSA.com](https://www.nissanusa.com), you'll find virtual product demonstrations, a way to "build your own Nissan," a dealer locator, and more information about key Nissan support services. Or if you'd prefer, call **1-800-NISSAN-3** for answers to specific questions about Murano[®] or any other Nissan vehicle. The Nissan names, logos, product names, feature names, and slogans are trademarks owned by or licensed to Nissan Motor Co. Ltd. and/or its North American subsidiaries. Other trademarks and trade names are those of their respective owners. **Always wear your seat belt, and please drive responsibly.** ©2022 Nissan North America, Inc. ²³Murano[®] 2305821-N-9/21-60K-KSL