



**2022**  
**SILVERADO**  
**COMMERCIAL**

# NEW LOOK. SAME STRONG WORK ETHIC.

Silverado may have a bold new look, but the story remains the same: No full-size pickup is going to work harder for you.

A family of powerplants includes a base 2.7L Turbo High-Output engine with 430 lb.-ft. of torque – 24% more than the previous engine – and an available 6.2L V8 that delivers serious towing muscle. Workhorse credentials include the Durabed that offers best-in-class standard cargo bed volume<sup>1</sup> and features like the Multi-Flex Tailgate, available on all nine trim levels. Add in available advanced trailering technologies and a functional interior that doubles as your mobile office, and you have a truck that's just as capable as you are.



Silverado 1500 Crew Cab Short Bed WT 4x4 in Summit White with available features.

<sup>1</sup>Excludes other GM vehicles.



## INTRODUCING SILVERADO COMMERCIAL

### AT A GLANCE.

- 2.7L Turbo High-Output engine and 8-speed transmission:  
310 horsepower and 430 lb.-ft. of torque
- Available 5.3L EcoTec3 V8 and 10-speed transmission:  
355 horsepower and 383 lb.-ft. of torque
- Available 6.2L EcoTec3 V8 and 10-speed transmission:  
420 horsepower and 460 lb.-ft. of torque
- Available Duramax® 3.0L Turbo-Diesel I-6 and 10-speed transmission:  
277 horsepower and 460 lb.-ft. of torque; offers an EPA-estimated 31 MPG highway<sup>1</sup>
- 13,300 lbs. of maximum trailering weight<sup>2</sup>
- Maximum payload of 2,270 lbs.<sup>3</sup>
- Durabed with 12 standard tie-downs is designed with a roll-formed high-strength steel floor that's stronger, lighter and more durable than a traditional stamped steel floor
- 89.1 cu. ft.<sup>4</sup> of cargo volume on Long Bed, 71.7 cu. ft.<sup>4</sup> on Standard Bed and 62.9 cu. ft.<sup>4</sup> on Short Bed
- Multi-Flex Tailgate with six different functions is available on all models
- Available power-up/-down tailgate
- 8 available cameras with up to 14 unique views<sup>5</sup> – see page 6 for more information
- Available Work Truck Package includes skid plates and a heavy-duty air filter with air filter monitor
- Available Trailering App<sup>6</sup> and myChevrolet Mobile App with Trailering<sup>7</sup>



Durabed, available Multi-Flex Tailgate and available Retractable Tonneau Cover<sup>8</sup> from Chevrolet Accessories.



Silverado 1500 WT interior in Jet Black with available features.

<sup>1</sup> EPA-estimated MPG city/highway: 23/31 (2WD), 22/26 (4x4), 20/23 (Trail Boss 4x4). <sup>2</sup> Requires Silverado Double Cab 2WD with available Duramax 3.0L Turbo-Diesel engine, Max Trailering Package and 20-inch wheels or Silverado Double Cab Standard Bed RST 4x4 with available 6.2L V8 engine, Max Trailering Package and 20-inch wheels. Maximum trailering ratings are intended for comparison purposes only. Before you buy a vehicle or use it for trailering, carefully review the Trailering section of the Owner's Manual. The trailering capacity of your specific vehicle may vary. The weight of passengers, cargo and options or accessories may reduce the amount you can trailer. <sup>3</sup> Requires Silverado Regular Cab Standard Bed 2WD with 2.7L Turbo High-Output engine. For comparison purposes only. See the Owner's Manual and the label on the vehicle door jamb for the carrying capacity of a specific vehicle. <sup>4</sup> Cargo and load capacity limited by weight and distribution. <sup>5</sup> Safety or driver assistance features are no substitute for the driver's responsibility to operate the vehicle in a safe manner. Read the vehicle Owner's Manual for important feature limitations and information. Some camera views require available accessory camera and installation. Not compatible with all trailers. See your dealer for details. <sup>6</sup> App functionality and features vary with vehicle equipment and trim level. Data connection may be required. Some features require active service plan and working electrical system. User terms and limitations apply. <sup>7</sup> Available on select Apple and Android devices. Service availability, features and functionality vary by vehicle, vehicle equipment, trim level, device and the plan you are enrolled in. Some features may require a working electrical system. User terms apply. Device data connection required. Visit onstar.com for details and limitations. <sup>8</sup> Non-GM warranty. Limited warranty by REV, 3 years. For more information, contact your dealer. Dealer-installed accessory.

## INTRODUCING SILVERADO COMMERCIAL

### WHAT'S NEW FOR 2022.

- The first-ever Silverado ZR2<sup>1</sup> with Multimatic DSSV™ dampers, front and rear electronic locking differentials, 6.2L V8 engine, enhanced 2-speed transfer case with Terrain mode, off-road cut front bumper, large underbody skid plates, 33-inch Goodyear Wrangler Territory® mud-terrain tires and more
- Fully redesigned interior on LT and above includes a 13.4-inch diagonal color touch-screen display with Google built-in<sup>2</sup> compatibility and a 12.3-inch diagonal reconfigurable multi-color Driver Information Center
- Bold exterior updates include new bumpers, grilles, headlamps and wheel options
- 2.7L Turbo High-Output engine generates 430 lb.-ft. of torque – a 24% increase in torque over the previous engine
- 5.3L EcoTec3 V8, 6.2L EcoTec3 V8 and Duramax 3.0L Turbo-Diesel I-6 engines are available with 10-speed automatic transmissions, which can include an available Electronic Transmission Range Selector
- Chevy Safety Assist<sup>3,4</sup> is standard on all models
- High Country enhancements include new Nightshift Blue/ Jet Black interior color option, authentic open-pore wood trim, leather seating surfaces with exclusive custom perforation and stitching pattern, reimagined High Country embroidery on head restraints and High Country metal badging on door panels
- Super Cruise™<sup>5</sup> hands-free driver assistance technology with Trailing and Enhanced Automatic Emergency Braking<sup>4,6</sup> (limited availability on High Country)



Silverado Crew Cab Short Bed ZR2<sup>1</sup> in Glacier Blue Metallic (extra-cost color) with available features.



13.4-inch diagonal color touch-screen display with Google built-in<sup>2</sup> compatibility on LT and above.

<sup>1</sup> ZR2 has very limited availability. <sup>2</sup> Google built-in services are subject to limitations and availability may vary by vehicle, infotainment system and location. Select service plan required. Certain Google actions and functionality may require account linking. User terms and privacy statements apply. <sup>3</sup> Chevy Safety Assist includes Automatic Emergency Braking, Front Pedestrian Braking, Lane Keep Assist with Lane Departure Warning, Forward Collision Alert, IntelliBeam and Following Distance Indicator. <sup>4</sup> Safety or driver assistance features are no substitute for the driver's responsibility to operate the vehicle in a safe manner. Read the vehicle Owner's Manual for important feature limitations and information. <sup>5</sup> Always pay attention while driving and when using Super Cruise. Do not use a hand-held device. Requires active Super Cruise plan or trial. Terms apply. Visit [chevrolet.com/supercruise.com](https://chevrolet.com/supercruise) for compatible roads and full details. <sup>6</sup> Enhanced Automatic Emergency Braking replaces Automatic Emergency Braking included with Chevy Safety Assist.



## TRAILERING FEATURES

# BECAUSE TOWING IS A FULL-TIME JOB.

Silverado offers integrated towing technologies that help deliver confidence and make towing big loads easy.

- Available advanced trailering features include:
  - Hitch Guidance with Hitch View<sup>1</sup>
  - Hitch area lighting
  - Electric Parking Brake hookup assist
  - Integrated trailer brake controller
  - Trailer Theft Alert
  - myChevrolet Mobile App<sup>2</sup> with Trailering
- Available Trailering App<sup>3</sup> offers:
  - Customized trailer profiles
  - Pre-departure checklists
  - Trailer lighting diagnostics
  - Trailer tire pressure/temperature monitoring<sup>4</sup>
- Standard trailering features include:
  - StabiliTrak<sup>®</sup> with Trailer Sway Control and Hill Start Assist
  - Tow/Haul mode
  - Auto Grade Braking
  - Trailering Information Label
- Available camera technology<sup>1</sup> features include:
  - Jack-Knife Alert
  - Bed View with Cargo Bed Zoom and Bed Hitch Guidance



Silverado Crew Cab Short Bed High Country 4x4 in Northsky Blue Metallic with available features.



Available Jack-Knife Alert warning.

## Trailering Guide >

<sup>1</sup> Safety or driver assistance features are no substitute for the driver's responsibility to operate the vehicle in a safe manner. Read the vehicle Owner's Manual for important feature limitations and information. <sup>2</sup> Available on select Apple and Android devices. Service availability, features and functionality vary by vehicle, vehicle equipment, trim level, device and the plan you are enrolled in. Some features may require a working electrical system. User terms apply. Device data connection required. Visit [onstar.com](https://onstar.com) for details and limitations. <sup>3</sup> App functionality and features vary with vehicle equipment and trim level. Data connection may be required. Some features require active service plan and working electrical system. User terms and limitations apply. <sup>4</sup> Requires available Trailer Tire Pressure Monitor Sensors.

## CAMERA TECHNOLOGIES

# 8 AVAILABLE CAMERAS WITH UP TO 14 UNIQUE VIEWS.

Silverado offers advanced camera technologies that help you keep an eye on what you're towing and nearly everything that surrounds you. From hitching to driving to parking, these features are designed to help make your towing job easier from start to finish. Available on Silverado LT, RST, LT Trail Boss, LTZ, ZR2 and High Country.

- Four available hitch views<sup>1</sup>

- Hitch View
- Surround View
- Rear Top-Down View
- Bed View

- Six available driving views<sup>1</sup>

- Transparent Trailer View<sup>2</sup>
- Front Camera View
- Pic-In-Pic Side View<sup>2</sup>
- Rear Camera Mirror<sup>3</sup>
- Rear Trailer View<sup>2</sup>
- Inside Trailer View<sup>2</sup>

- Four available parking views<sup>1</sup>

- Rear Camera View
- Rear Side View/Rear Side View (Turn-Signal Activated)
- Front Side View
- Front Top-Down View



Available Surround View<sup>1</sup>



Available Transparent Trailer View<sup>2</sup>

## Camera Technologies >

<sup>1</sup> Safety or driver assistance features are not a substitute for the driver's responsibility to operate the vehicle in a safe manner. The driver should remain attentive to traffic, surroundings and road conditions at all times. Visibility, weather and road conditions may affect feature performance. Read the vehicle Owner's Manual for more important feature limitations and information. Some camera views require available accessory camera and installation. Not compatible with all trailers. See your dealer for details.

<sup>2</sup> Requires available Chevrolet Accessory Camera and installation. Not compatible with all trailers. Customers can see their dealer for full details. <sup>3</sup> Not available on LT, RST or LT Trail Boss.

## MODEL AVAILABILITY

● STANDARD – NOT AVAILABLE

### REGULAR CAB – STANDARD BED



MODEL	STANDARD ENGINE	AVAILABLE ENGINES	2WD	4x4
WT	2.7L Turbo High-Output	–	●	●

### REGULAR CAB – LONG BED



MODEL	STANDARD ENGINE	AVAILABLE ENGINES	2WD	4x4
WT	2.7L Turbo High-Output	5.3L EcoTec3 V8	●	●

### DOUBLE CAB – STANDARD BED



MODEL	STANDARD ENGINE	AVAILABLE ENGINES	2WD	4x4
WT	2.7L Turbo High-Output	5.3L EcoTec3 V8	●	●
Custom	2.7L Turbo High-Output	–	●	●
LT	2.7L Turbo High-Output	5.3L EcoTec3 V8, Duramax 3.0L I-6	●	●
RST	2.7L Turbo High-Output	5.3L EcoTec3 V8, 6.2L EcoTec3 V8, Duramax 3.0L I-6	–	●

### CREW CAB – SHORT BED



MODEL	STANDARD ENGINE	AVAILABLE ENGINES	2WD	4x4
WT	2.7L Turbo High-Output	5.3L EcoTec3 V8	●	●
Custom	2.7L Turbo High-Output	–	●	●
Custom Trail Boss	2.7L Turbo High-Output	5.3L EcoTec3 V8, Duramax 3.0L I-6	–	●
LT	2.7L Turbo High-Output	5.3L EcoTec3 V8, Duramax 3.0L I-6	●	●
RST	5.3L EcoTec3 V8	6.2L EcoTec3 V8 <sup>1</sup> ; Duramax 3.0L I-6 <sup>1</sup>	●	●
LT Trail Boss	2.7L Turbo High-Output	5.3L EcoTec3 V8, 6.2L EcoTec3 V8, Duramax 3.0L I-6	–	●
LTZ	5.3L EcoTec3 V8	6.2L EcoTec3 V8 <sup>1</sup> ; Duramax 3.0L I-6	●	●
ZR2 <sup>2</sup>	6.2L EcoTec3 V8	–	–	●
High Country	5.3L EcoTec3 V8	6.2L EcoTec3 V8 <sup>1</sup> ; Duramax 3.0L I-6	●	●

### CREW CAB – STANDARD BED



MODEL	STANDARD ENGINE	AVAILABLE ENGINES	2WD	4x4
WT	2.7L Turbo High-Output	5.3L EcoTec3 V8	●	●
Custom	2.7L Turbo High-Output	–	–	●
Custom Trail Boss	2.7L Turbo High-Output	5.3L EcoTec3 V8, Duramax 3.0L I-6	–	●
LT	2.7L Turbo High-Output	5.3L EcoTec3 V8, Duramax 3.0L I-6 <sup>1</sup>	●	●
RST	5.3L EcoTec3 V8	6.2L EcoTec3 V8	–	●
LT Trail Boss	2.7L Turbo High-Output	5.3L EcoTec3 V8, 6.2L EcoTec3 V8, Duramax 3.0L I-6	–	●
LTZ	5.3L EcoTec3 V8	6.2L EcoTec3 V8, Duramax 3.0L I-6	–	●
High Country	5.3L EcoTec3 V8	6.2L EcoTec3 V8, Duramax 3.0L I-6	–	●

<sup>1</sup> Requires available 4x4. <sup>2</sup> ZR2 has very limited availability.

Some features shown may have limited, late or no availability. See dealer for feature availability.



## ENGINE SPECIFICATIONS



**2.7L TURBO HIGH-OUTPUT (L3B)** Standard on WT, Custom, Custom Trail Boss, LT, RST Double Cab and LT Trail Boss.

Equipped with Active Fuel Management™ and Automatic Stop/Start

8-speed automatic transmission

310 hp @ 5600 rpm

430 lb.-ft. of torque @ 3000 rpm

Displacement: 2726 cc (166 cu. in.)

Bore and stroke: 92.25 mm x 102 mm (3.63 in. x 4.01 in.)

Compression ratio: 10.0:1

Alternator: 220 amps

Block: Cast-aluminum

Cylinder head: Cast-aluminum

Valvetrain: Dual overhead valve with 4 valves per cylinder and Variable Valve Timing (VVT)

Fuel delivery: Direct Injection

Max payload rating: 2,270 lbs.<sup>1,2</sup>

Max conventional trailering weight rating: 9,500 lbs.<sup>3,4</sup>

EPA-estimated fuel economy – 2WD: 19 MPG city/22 highway

EPA-estimated fuel economy – 4x4: 17 MPG city/20 highway

EPA-estimated fuel economy – Trail Boss 4x4: 16 MPG city/18 highway

**5.3L ECOTEC3 V8 (L84)** Standard on RST Crew Cab, LTZ and High Country 2WD models. Available on WT,<sup>5</sup> LT and RST Double Cab 2WD models. Available on LT, RST, LTZ and High Country 4x4 models with Max Trailering Package.

Equipped with Dynamic Fuel Management and Automatic Stop/Start

10-speed automatic transmission or 8-speed automatic transmission (requires Fleet or Government order)

355 hp @ 5600 rpm

383 lb.-ft. of torque @ 4100 rpm

Displacement: 5328 cc (325 cu. in.)

Bore and stroke: 96.01 mm x 92 mm (3.78 in. x 3.62 in.)

Compression ratio: 11.0:1

Alternator: 170 amps

Block: Cast-aluminum

Cylinder head: Cast-aluminum

Valvetrain: Overhead valve with 2 valves per cylinder and Variable Valve Timing (VVT)

Fuel delivery: Direct Injection

Max payload rating: 2,120 lbs.<sup>1,4</sup>

Max conventional trailering weight rating: 11,200 lbs.<sup>3,6</sup>

EPA-estimated fuel economy – 2WD: 16 MPG city/21 highway

EPA-estimated fuel economy – 4x4: 15 MPG city/19 highway

**5.3L ECOTEC3 V8 (L84/YK97)** Available on WT, Custom Trail Boss, LT, RST, LT Trail Boss, LTZ and High Country 4x4 models.

Equipped with Automatic Start/Stop; not equipped with Dynamic Fuel Management

10-speed automatic transmission

355 hp @ 5600 rpm

383 lb.-ft. of torque @ 4100 rpm

Displacement: 5328 cc (325 cu. in.)

Bore and stroke: 96.01 mm x 92 mm (3.78 in. x 3.62 in.)

Compression ratio: 11.0:1

Alternator: 170 amps

Block: Cast-aluminum

Cylinder head: Cast-aluminum

Valvetrain: Overhead valve with 2 valves per cylinder and Variable Valve Timing (VVT)

Fuel delivery: Direct Injection

Max payload rating: 2,080 lbs.<sup>1,8</sup>

Max conventional trailering weight rating: 11,000 lbs.<sup>3,9</sup>

EPA-estimated fuel economy – 4x4: 14 MPG city/19 highway

EPA-estimated fuel economy – Trail Boss 4x4: 13 MPG city/17 highway

<sup>1</sup> These maximum payload ratings are intended for comparison purposes only. Before you buy a vehicle or use it to haul people or cargo, carefully review the Vehicle Loading section of the Owner's Manual and check the carrying capacity of your specific vehicle on the label on the inside of the driver door jamb. <sup>2</sup> Requires Silverado Regular Cab Standard Bed 2WD. <sup>3</sup> Maximum trailering ratings are intended for comparison purposes only. Before you buy a vehicle or use it for trailering, carefully review the Trailering section of the Owner's Manual. The trailering capacity of your specific vehicle may vary. The weight of passengers, cargo and options or accessories may reduce the amount you can trailer. <sup>4</sup> Requires Silverado Regular Cab Long Bed 2WD. <sup>5</sup> Not available on Regular Cab Standard Bed WT 2WD. <sup>6</sup> Requires Silverado Double Cab Standard Bed 2WD with available Max Trailering Package or Silverado Crew Cab Short Bed 2WD with available Max Trailering Package. <sup>7</sup> 4x4 models built with a V8 engine and 10-speed automatic transmission are not equipped with Dynamic Fuel Management and its content. Contact a dealer for details on a specific vehicle. Vehicles not equipped with Dynamic Fuel Management will be less fuel efficient. <sup>8</sup> Requires Silverado Crew Cab Short Bed 4x4 with available Max Trailering Package. <sup>9</sup> Requires Silverado Double Cab Standard Bed 4x4 with available Max Trailering Package or Silverado Crew Cab Short Bed 4x4 with available Max Trailering Package.



## ENGINE SPECIFICATIONS (CONTINUED)



**6.2L ECOTEC3 V8 (L87)** Standard on ZR2<sup>1</sup>. Available on RST, LT Trail Boss, LTZ and High Country 4x4 models.

Equipped with Dynamic Fuel Management and Automatic Stop/Start

10-speed automatic transmission

420 hp @ 5600 rpm

460 lb.-ft. of torque @ 4100 rpm

Displacement: 6162 cc (376 cu. in.)

Bore and stroke: 103.25 mm x 92 mm (4.06 in. x 3.62 in.)

Compression ratio: 11.0:1

Alternator: 170 amps

Block: Cast-aluminum

Cylinder head: Cast-aluminum

Valvetrain: Overhead valve with 2 valves per cylinder and Variable Valve Timing (VVT)

Fuel delivery: Direct Injection

Max payload rating: 2,030 lbs.<sup>2,3</sup>

Max conventional trailering weight rating: 13,300 lbs.<sup>4,5</sup>

EPA-estimated fuel economy – 4x4: 15 MPG city/20 highway

EPA-estimated fuel economy – Trail Boss 4x4: 14 MPG city/18 highway

EPA-estimated fuel economy – ZR2: 14 MPG city/17 highway



**DURAMAX 3.0L TURBO-DIESEL I-6 (LM2)** Available on Custom Trail Boss, LT, RST, LT Trail Boss, LTZ and High Country 4x4 models.

Equipped with Diesel Exhaust Brake System

10-speed automatic transmission

277 hp @ 3750 rpm

460 lb.-ft. of torque @ 1500 rpm

Displacement: 2992 cc (183 cu. in.)

Bore and stroke: 84 mm x 90 mm (3.30 in. x 3.54 in.)

Compression ratio: 15.0:1

Alternator: 220 amps

Block: Cast-aluminum

Cylinder head: Cast-aluminum

Valvetrain: Dual overhead valve with 4 valves per cylinder and Variable Valve Timing (VVT)

Fuel delivery: High-pressure, common rail Direct Injection

Max payload rating: 1,930 lbs.<sup>2,6</sup>

Max conventional trailering weight rating: 13,300 lbs.<sup>4,7</sup>

EPA-estimated fuel economy – 2WD: 23 MPG city/31 highway

EPA-estimated fuel economy – 4x4: 22 MPG city/26 highway

EPA-estimated fuel economy – Trail Boss 4x4: 20 MPG city/23 highway

<sup>1</sup> ZR2 has very limited availability. <sup>2</sup> These maximum payload ratings are intended for comparison purposes only. Before you buy a vehicle or use it to haul people or cargo, carefully review the Vehicle Loading section of the Owner's Manual and check the carrying capacity of your specific vehicle on the label on the inside of the driver door jamb. <sup>3</sup> Requires Silverado Crew Cab Short Bed 4x4 with available Max Trailering Package and 18" or 20" wheels. <sup>4</sup> Maximum trailering ratings are intended for comparison purposes only. Before you buy a vehicle or use it for trailering, carefully review the Trailering section of the Owner's Manual. The trailering capacity of your specific vehicle may vary. The weight of passengers, cargo and options or accessories may reduce the amount you can trailer. <sup>5</sup> Requires Silverado Double Cab Standard Bed 4x4 with available Max Trailering Package and 20" wheels. <sup>6</sup> Requires Silverado Crew Cab Short Bed 2WD. <sup>7</sup> Requires Silverado Double Cab Standard Bed 2WD with available Max Trailering Package and 20" wheels.

## PAYLOAD & TRAILERING WEIGHT RATINGS

MODEL	ENGINE	MAX PAYLOAD (LBS.) <sup>1</sup>	MAX CONVENTIONAL TRAILERING (LBS.) <sup>2</sup>
<b>REGULAR CAB</b>			
Standard Bed 2WD	2.7L Turbo	2,270	9,100
	2.7L Turbo	2,240	9,500
Long Bed 2WD	5.3L V8 with 8-speed <sup>3</sup>	2,140	9,900
	5.3L V8 with 10-speed	2,120	9,800
Standard Bed 4x4	2.7L Turbo	2,130	8,900
	2.7L Turbo	2,110	9,300
Long Bed 4x4	5.3L V8 with 8-speed <sup>3</sup>	2,010	9,700
	5.3L V8 with 10-speed	1,990	9,600
<b>DOUBLE CAB</b>			
Standard Bed 2WD	2.7L Turbo	2,040	9,200
	5.3L V8 with 8-speed <sup>3</sup>	1,940	9,700
	5.3L V8 with 10-speed	1,930	9,500
	Duramax 3.0L I-6	1,830	9,300
Standard Bed 2WD with Max Trailering Package	5.3L V8 with 10-speed	2,040	11,200
	Duramax 3.0L I-6	1,890	12,100
Standard Bed 2WD with Max Trailering Package and 20" Wheels	Duramax 3.0L I-6	1,890	13,300
Standard Bed 4x4	2.7L Turbo	2,020	9,000
	5.3L V8 with 8-speed <sup>3</sup>	1,910	9,500
	5.3L V8 with 10-speed	1,910	9,300
	6.2L V8	1,720	9,200
	Duramax 3.0L I-6	1,780	9,000
Standard Bed 4x4 with Max Trailering Package	5.3L V8 with 10-speed	2,030	11,000
	6.2L V8	1,980	12,000
	Duramax 3.0L I-6	1,870	11,800
Standard Bed 4x4 with Max Trailering Package and 20" Wheels	6.2L V8	1,980	13,300
	Duramax 3.0L I-6	1,870	13,000
<b>CREW CAB</b>			
Short Bed 2WD	2.7L Turbo	2,030	9,200
	5.3L V8 with 8-speed <sup>3</sup>	2,020	9,700
	5.3L V8 with 10-speed	2,010	9,500
	Duramax 3.0L I-6	1,930	9,300

MODEL	ENGINE	MAX PAYLOAD (LBS.) <sup>1</sup>	MAX CONVENTIONAL TRAILERING (LBS.) <sup>2</sup>
<b>CREW CAB (CONTINUED)</b>			
Short Bed 2WD with Max Trailering Package	5.3L V8 with 10-speed	2,030	11,200
	Duramax 3.0L I-6	1,870	12,000
Short Bed 2WD with Max Trailering Package and 20" Wheels	Duramax 3.0L I-6	1,870	13,200
	2.7L Turbo	1,950	9,200
Standard Bed 2WD	5.3L V8 with 8-speed <sup>3</sup>	1,950	9,600
	5.3L V8 with 10-speed	1,930	9,400
Standard Bed 2WD with Max Trailering Package	5.3L V8 with 10-speed	1,900	11,100
	2.7L Turbo	2,010	9,000
Short Bed 4x4	5.3L V8 with 8-speed <sup>3</sup>	2,010	9,500
	5.3L V8 with 10-speed	2,060	9,200
	6.2L V8	1,880	9,100
	Duramax 3.0L I-6	1,870	9,000
Short Bed 4x4 with Max Trailering Package	5.3L V8 with 10-speed	2,080	11,000
Short Bed 4x4 with Max Trailering Package and 18" Wheels	6.2L V8	2,030	11,900
	Duramax 3.0L I-6	1,920	11,700
Short Bed 4x4 with Max Trailering Package and 20" Wheels	6.2L V8	2,030	13,200
	Duramax 3.0L I-6	1,920	12,900
Short Bed Trail Boss 4x4	5.3L V8 with 10-speed	1,680	9,100
Short Bed ZR2 <sup>4</sup> 4x4	6.2L V8	1,440	8,900
	2.7L Turbo	1,950	8,900
Standard Bed 4x4	5.3L V8 with 8-speed <sup>3</sup>	1,950	9,400
	5.3L V8 with 10-speed	1,940	9,200
	6.2L V8	1,820	9,000
	Duramax 3.0L I-6	1,810	8,900
Standard Bed 4x4 with Max Trailering Package	5.3L V8 with 10-speed	2,020	10,900
Standard Bed 4x4 with Max Trailering Package and 18" Wheels	6.2L V8	1,980	11,800
	Duramax 3.0L I-6	1,870	11,700
Standard Bed 4x4 with Max Trailering Package and 20" Wheels	6.2L V8	1,980	13,100
	Duramax 3.0L I-6	1,870	12,900
Standard Bed Trail Boss 4x4	5.3L V8 with 10-speed	1,640	9,200

<sup>1</sup> These maximum payload ratings are intended for comparison purposes only. Before you buy a vehicle or use it to haul people or cargo, carefully review the Vehicle Loading section of the Owner's Manual and check the carrying capacity of your specific vehicle on the label on the inside of the driver door jamb. <sup>2</sup> Maximum trailering ratings are intended for comparison purposes only. Before you buy a vehicle or use it for trailering, carefully review the Trailering section of the Owner's Manual. The trailering capacity of your specific vehicle may vary. The weight of passengers, cargo and options or accessories may reduce the amount you can trailer. <sup>3</sup> Requires Fleet or Government order. <sup>4</sup> ZR2 has very limited availability.

## STANDARD EQUIPMENT

Standard on every Silverado 1500:

### MECHANICAL

**Battery** – heavy-duty with rundown protection and retained accessory power

**Brakes** – 4-wheel antilock disc with Duralife® brake rotors and brake lining wear indicator

**Frame** – fully boxed frame with hydroformed front section

**StabiliTrak®** – Electronic Stability Control System and Traction Control; includes Electronic Trailer Sway Control and Hill Start Assist

**Steering** – rack-and-pinion with Electric Power Steering (EPS) assist

**Trailer Information Label** – provides maximum trailering weight ratings for tongue weight and conventional, gooseneck and 5th-wheel trailering

### EXTERIOR

**Bumper** – rear CornerSteps

**Cargo area lighting** – integrated with center high-mounted stop lamp

**Daytime running lamps** – automatic on/off with automatic delay

**Fuel filler** – capless fueling

**Pickup bed** – Durabed

**Tailgate and bed rail** – protection cap

**Tie-downs** – 12 fixed cargo tie-downs, rated at 500 lbs<sup>1</sup> per corner

**Tire** – carrier lock

**Tire** – full-size spare

### INTERIOR

**Chevy Safety Assist<sup>2</sup>**

Automatic Emergency Braking  
Front Pedestrian Braking  
Lane Keep Assist with Lane Departure Warning  
Forward Collision Alert  
IntelliBeam, auto high beams  
Following Distance Indicator

**Airbags<sup>3</sup>** – dual-stage frontal airbags for driver and front outboard passenger; seat-mounted side-impact airbags for driver and front outboard passenger; head-curtain airbags for front and rear outboard seating positions; includes front outboard Passenger Sensing System for frontal outboard passenger airbag

**Air vents** – rear, heating/cooling (Double Cab and Crew Cab)

**Assist handles** – driver and front passenger, A-pillar; rear passenger, B-pillar

**Buckle to Drive**

**Connectivity** – Bluetooth® phone connectivity and wireless audio streaming<sup>4</sup>

**Door locks** – power programmable with lockout protection and manual rear door child security

**Driver Information Center**

**Media** – two USB ports<sup>5</sup> on instrument panel

**Power outlet** – 12-volt auxiliary, front

**Push-Button Start**

**Rear Seat Reminder<sup>6</sup>** (Double Cab and Crew Cab)

**Remote Keyless Entry**

**Teen Driver technology<sup>2</sup>**

**Temperature display** – outside

**Tire Pressure Monitoring System** – with auto learn and Tire Fill Alert (does not apply to spare tire)

**Windows** – power with driver express-up/-down

<sup>1</sup> These maximum payload ratings are intended for comparison purposes only. Before you buy a vehicle or use it to haul people or cargo, carefully review the Vehicle Loading section of the Owner's Manual and check the carrying capacity of your specific vehicle on the label on the inside of the driver door jamb. <sup>2</sup> Safety or driver assistance features are no substitute for the driver's responsibility to operate the vehicle in a safe manner. Read the vehicle Owner's Manual for important feature limitations and information. <sup>3</sup> A NOTE ON CHILD SAFETY: Always use seat belts and the correct child restraint for your child's age and size, even with airbags. Even in vehicles equipped with the Passenger Sensing System, children are safer when properly secured in a rear seat in the appropriate infant, child or booster seat. Never place a rear-facing infant restraint in the front seat of any vehicle equipped with an active frontal airbag. See your vehicle Owner's Manual and the child safety seat instructions for more safety information. <sup>4</sup> Go to [my.chevrolet.com/learnAbout/bluetooth](http://my.chevrolet.com/learnAbout/bluetooth) to find out which phones are compatible with the vehicle. Full Bluetooth feature functionality varies by device, model and software version. <sup>5</sup> Not compatible with all devices. <sup>6</sup> Does not detect people or items. Always check rear seat before exiting.



## EXTERIOR COLORS



Summit White<sup>1</sup>



Iridescent Pearl Tricoat<sup>2,3</sup>



Silver Ice Metallic<sup>1</sup>



Dark Ash Metallic



Sand Dune Metallic<sup>4</sup>



Red Hot<sup>5</sup>



Cherry Red Tintcoat<sup>2,6</sup>



Glacier Blue Metallic<sup>1,2</sup>



Northsky Blue Metallic



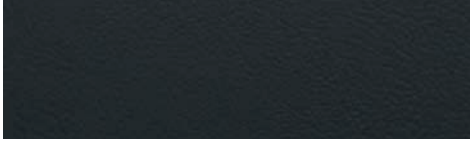
Black

<sup>1</sup> Not available on High Country. <sup>2</sup> Extra-cost color. <sup>3</sup> Available on LT Trail Boss, LTZ and High Country. <sup>4</sup> Available on Custom Trail Boss, LT Trail Boss and ZR2. <sup>5</sup> Not available on LTZ and High Country. <sup>6</sup> Not available on WT, Custom, Custom Trail Boss and ZR2.

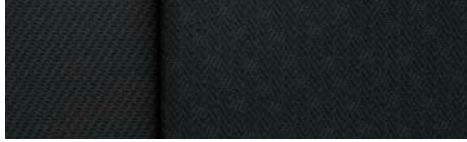
Some features shown may have limited, late or no availability. See dealer for feature availability.

## INTERIOR COLORS

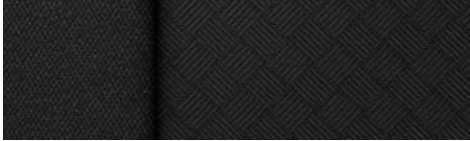
### WT INTERIOR COLORS



Jet Black Vinyl

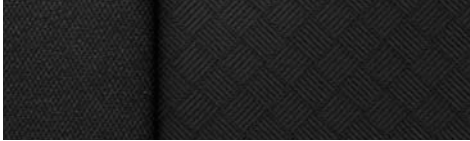


Jet Black Cloth



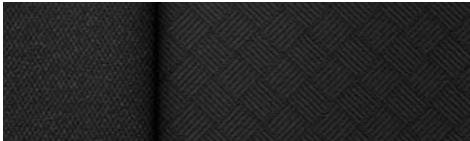
Jet Black Cloth<sup>1</sup>

### CUSTOM AND CUSTOM TRAIL BOSS INTERIOR COLOR

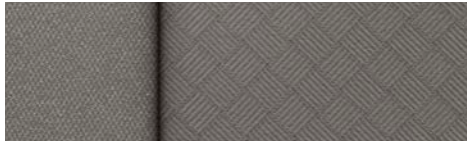


Jet Black Cloth

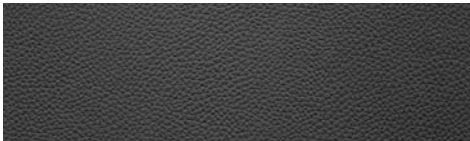
### LT, RST AND LT TRAIL BOSS INTERIOR COLORS



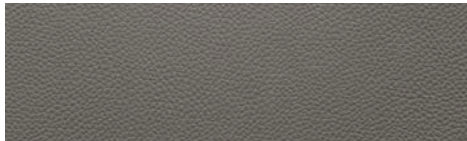
Jet Black Cloth



Gideon Cloth



Jet Black Leather-Appointed Front Seating



Gideon Leather-Appointed Front Seating

<sup>1</sup> Requires available WT Fleet Convenience Package and 10-way power driver seat adjuster. Not available with pickup bed delete.

## INTERIOR COLORS (CONTINUED)

### LTZ INTERIOR COLORS



Jet Black Perforated Leather-Appointed Front Seating



Gideon Perforated Leather-Appointed Front Seating

### ZR2<sup>1</sup> INTERIOR COLOR



Graystone Leather-Appointed Front Seating with Jet Black Accents and Strike Yellow Accent Stitching

### HIGH COUNTRY INTERIOR COLORS



Jet Black Perforated Leather Seating Surfaces



Nightshift Blue Perforated Leather Seating Surfaces with Jet Black Accents

<sup>1</sup> ZR2 has very limited availability.



## WHEELS



17" Ultra Silver-Painted Steel Wheels (RD6)  
Standard on WT



17" Bright Silver-Painted Aluminum Wheels (Q5U)  
Standard on LT; available on WT



18" High-Gloss Black-Painted Aluminum Wheels (RD1)  
Standard on Custom Trail Boss and LT Trail Boss



18" Bright Silver-Painted Aluminum Wheels (RCV)  
Available on WT<sup>1</sup> and LT



18" Bright Silver-Painted Aluminum Wheels (RCV)  
Standard on RST



18" Machined-Face Aluminum Wheels with Black-Painted  
Spokes and Oxide Gold-Painted Outer Ring Accents (RCW)  
Standard on ZR2<sup>2</sup>



18" Gloss Black-Painted Aluminum Wheels (RQL)  
Available on ZR2<sup>2</sup>

<sup>1</sup> Requires Double Cab or Crew Cab and available 5.3L V8 engine (L84), Z71 Off-Road Package and LT275/65R18 Goodyear Wrangler DuraTrac tires. <sup>2</sup> ZR2 has very limited availability.

## WHEELS (CONTINUED)



20" Bright Silver-Painted Aluminum Wheels (NZP)  
Standard on Custom



20" High-Gloss Black-Painted Aluminum Wheels (RD5)  
Available on Custom, Custom Trail Boss,  
RST and LT Trail Boss



20" Machined-Face Painted-Aluminum Wheels with  
Grazen-Painted Pockets (NZN)  
Available on LT



20" Machined-Face Painted-Aluminum Wheels with  
Grazen-Painted Pockets (NZN)  
Available on RST



20" High-Gloss Black-Painted Aluminum Wheels  
with Red Accents (RPS)  
Available on RST with Redline Edition



20" Sterling Silver-Painted Aluminum Wheels (RH0)  
Standard on LTZ



20" Machined-Aluminum Wheels with  
Charcoal Pockets (NZV)  
Standard on High Country



22" Painted-Aluminum Wheels with Chrome Inserts (RPT)  
Available on High Country

# SPECIFICATIONS

● STANDARD ○ AVAILABLE – NOT AVAILABLE

	WT	CUSTOM	CUSTOM TB	LT	RST	LT TB	LTZ	ZR2 <sup>1</sup>	HIGH COUNTRY
<b>SAFETY AND DRIVER ASSISTANCE</b>									
Chevy Safety Assist <sup>2</sup>	●	●	●	●	●	●	●	●	●
Automatic Emergency Braking	●	●	●	●	●	●	●	●	●
Front Pedestrian Braking	●	●	●	●	●	●	●	●	●
Lane Keep Assist with Lane Departure Warning	●	●	●	●	●	●	●	●	●
Forward Collision Alert	●	●	●	●	●	●	●	●	●
IntelliBeam, auto high beams	●	●	●	●	●	●	●	●	●
Following Distance Indicator	●	●	●	●	●	●	●	●	●
Airbags <sup>3</sup> – dual-stage frontal airbags for driver and front outboard passenger; seat-mounted side-impact airbags for driver and front outboard passenger; head-curtain airbags for front and rear outboard seating positions; includes front outboard Passenger Sensing System for frontal outboard passenger airbag	●	●	●	●	●	●	●	●	●
Buckle to Drive (feature is available with Fleet or Government order)	●	●	●	●	●	●	●	●	●
Enhanced Automatic Emergency Braking <sup>2</sup> (replaces Automatic Emergency Braking; requires available Technology Package)	–	–	–	–	–	–	–	–	○
Lane Change Alert with Side Blind Zone Alert <sup>2</sup> (WT requires available WT Safety Package; LT requires available Fleet Safety Package)	○	–	–	○	–	–	–	–	–
Rear Cross Traffic Braking <sup>2</sup> (WT requires available WT Safety Package; LT requires available Safety Package or Fleet Safety Package; RST and LT Trail Boss require available Safety Package)	○	–	–	○	○	○	●	●	●

	WT	CUSTOM	CUSTOM TB	LT	RST	LT TB	LTZ	ZR2 <sup>1</sup>	HIGH COUNTRY
<b>SAFETY AND DRIVER ASSISTANCE (CONTINUED)</b>									
Rear Park Assist <sup>2</sup> – ultrasonic (WT requires available WT Safety Package; LT requires available Safety Package or Fleet Safety Package; RST and LT Trail Boss require available Safety Package; feature will not function on certain models without dealer retrofit; see dealer or window label for details)	○	–	–	○	○	○	–	●	–
Front and Rear Park Assist <sup>2</sup> – ultrasonic (feature will not function on certain models without dealer retrofit; see dealer or window label for details)	–	–	–	–	–	–	●	–	●
Rear Pedestrian Alert <sup>2</sup> (WT requires available WT Safety Package; LT, RST and LT Trail Boss require available Safety Package)	○	–	–	○	○	○	●	●	●
Rear Vision Camera <sup>2</sup>	●	●	●	–	–	–	–	–	–
HD Rear Vision Camera <sup>2</sup>	–	–	–	●	●	●	–	–	–
HD Surround Vision <sup>2</sup> (LT, RST and LT Trail Boss require available Safety Package)	–	–	–	○	○	○	●	●	●
Safety Alert Seat <sup>2</sup>	–	–	–	–	–	–	●	●	●
Teen Driver technology <sup>2</sup>	●	●	●	●	●	●	●	●	●
Theft-deterrent system – unauthorized entry	–	●	●	●	●	●	●	●	●
Tire Pressure Monitoring System – with auto learn and Tire Fill Alert (does not apply to spare tire)	●	●	●	●	●	●	●	●	●
Trailer Side Blind Zone Alert <sup>2</sup> (LT, RST and LT Trail Boss require available Safety Package)	–	–	–	○	○	○	●	●	●
Up to 3 months of OnStar <sup>®</sup> Safety & Security coverage <sup>4</sup> (WT requires available SiriusXM <sup>®5</sup> )	○	●	●	●	●	●	●	●	●

<sup>1</sup> ZR2 has very limited availability. <sup>2</sup> Safety or driver assistance features are no substitute for the driver's responsibility to operate the vehicle in a safe manner. Read the vehicle Owner's Manual for important feature limitations and information. <sup>3</sup> A NOTE ON CHILD SAFETY: Always use seat belts and the correct child restraint for your child's age and size, even with airbags. Even in vehicles equipped with the Passenger Sensing System, children are safer when properly secured in a rear seat in the appropriate infant, child or booster seat. Never place a rear-facing infant restraint in the front seat of any vehicle equipped with an active frontal airbag. See your vehicle Owner's Manual and the child safety seat instructions for more safety information. <sup>4</sup> When you select a monthly plan within 30 days of activating your 1-month trial, you'll receive the next 2 months of the plan you select at no additional charge when you associate an approved payment method on file to your account and authorize recurring payments for your service plan. The amount and frequency of each recurring payment is based upon the service(s) and payment interval(s) you select from the options provided. After the trial expires, OnStar will automatically bill your payment method monthly at then-current standard monthly rates. Plans containing 4G LTE data will be billed every 30 days by AT&T. You may cancel at any time by pushing your blue OnStar button or calling 1-888-466-7827. May not be combined with other offers or retroactively applied. Offer subject to change. <sup>5</sup> If you decide to continue service after your trial, your selected subscription plan will automatically renew thereafter. You will be charged at then-current rates. Fees and taxes apply. To cancel you must call SiriusXM at 1-866-635-2349. See SiriusXM Customer Agreement for complete terms at siriusxm.com. All fees and programming subject to change.





## SPECIFICATIONS (CONTINUED)

● STANDARD ○ AVAILABLE – NOT AVAILABLE

	WT	CUSTOM	CUSTOM TB	LT	RST	LT TB	LTZ	ZR2 <sup>1</sup>	HIGH COUNTRY
<b>MECHANICAL (CONTINUED)</b>									
Suspension Package – standard	●	–	–	●	●	–	–	–	–
– high-capacity (LT and RST require available 20" wheels)	–	●	–	○	○	–	●	–	●
– Z71 Off-Road (requires available Z71 Off-Road Package)	○	–	–	○	○	–	○	–	○
– Z71 Off-Road with 2-inch factory lift and monotube shocks	–	–	●	–	–	●	–	–	–
– ZR2 High-Performance suspension with factory lift and Multimatic DSSV™ dampers	–	–	–	–	–	–	–	●	–
– Adaptive Ride Control (requires available High Country Premium Package and 22" painted-aluminum wheels with chrome inserts [RPT])	–	–	–	–	–	–	–	–	○
Trailer brake controller – integrated (WT requires available Trailing Package)	○	○	○	○	○	○	●	●	●
Trailer Tire Pressure Monitor Sensors – set of four (separate installation required) (LT, RST and LT Trail Boss require available Convenience Package II)	–	–	–	○	○	○	○	○	○
Trailing App – includes trailering checklist, trailer maintenance reminders, trailer security alerts, trailer mileage, Tow/Haul mode reminder, trailer electrical diagnostics and Trailer Tire Pressure Monitoring System module (LT, RST and LT Trail Boss require available Convenience Package II)	–	–	–	○	○	○	●	●	●
Trailing Information Label – provides maximum trailering weight ratings for tongue weight and conventional, gooseneck and 5th-wheel trailering	●	●	●	●	●	●	●	●	●
Transfer case – single-speed, electronic Autotrac with push-button control (4x4 models)	●	●	–	●	●	–	●	–	–
– 2-speed, electronic Autotrac with push-button control; includes Terrain mode on ZR2 (4x4 models) (Double Cab and Crew Cab WT require available Z71 Off-Road Package; LT requires available Z71 Off-Road Package; RST and LTZ require available Z71 Off-Road Package or 6.2L V8 [L87])	○	–	●	○	○	●	○	●	●

	WT	CUSTOM	CUSTOM TB	LT	RST	LT TB	LTZ	ZR2 <sup>1</sup>	HIGH COUNTRY
<b>EXTERIOR</b>									
Assist steps – chrome, wheel-to-wheel (Crew Cab)	–	–	–	○	○	–	○	–	●
– power-retractable with foot-activated rearward articulation to provide bed access	–	–	–	–	–	–	○	–	○
Bedliner – Chevytec spray-on with logo (bed only; tailgate has Black composite inner panel) (LT, RST and LT Trail Boss require available Protection Package)	○	○	○	○	○	○	○	●	●
Bumpers – rear CornerSteps	●	●	●	●	●	●	●	●	●
– semi-gloss Black, front and rear	●	–	–	–	–	–	–	–	–
– body-color, front and rear	–	●	–	–	●	–	–	–	●
– high-gloss Black, front and rear	–	–	●	–	–	●	–	●	–
– chrome, front and rear	○	–	–	●	–	–	●	–	–
Cargo area lighting – integrated with center high-mounted stop lamp	●	●	●	●	●	●	●	●	●
– LED pickup bed, activated with switch in bed, instrument panel center switch bank or key fob (not available with pickup bed delete)	○	●	●	●	●	●	●	●	●
Daytime running lamps – automatic on/off with automatic delay	●	●	●	●	●	●	●	●	●
Door handles – Black	●	●	●	–	–	–	–	–	–
– high-gloss Black (RST requires available Redline Edition)	–	–	–	–	○	●	–	●	–
– body-color	–	–	–	●	●	–	–	–	–
– chrome	–	–	–	–	–	–	●	–	●
Fog lamps – LED	–	–	–	–	●	●	●	●	●
Fuel filler – capless fueling	●	●	●	●	●	●	●	●	●
Glass – solar-absorbing tinted	●	–	–	–	–	–	–	–	–
– deep-tinted behind front doors (Double Cab and Crew Cab)	○	●	●	●	●	●	●	●	●

<sup>1</sup> ZR2 has very limited availability.

## SPECIFICATIONS (CONTINUED)

● STANDARD ○ AVAILABLE – NOT AVAILABLE

	WT	CUSTOM	CUSTOM TB	LT	RST	LT TB	LTZ	ZR2 <sup>1</sup>	HIGH COUNTRY
<b>EXTERIOR (CONTINUED)</b>									
Grille – Chevrolet lettered grille, Black front grille bar and Black grille inserts with small Gold bowtie emblem	●	●	–	–	–	–	–	–	–
– Chevrolet lettered grille, Black front grille bar and Black grille inserts with small Z71 badge	–	–	●	–	–	–	–	–	–
– chrome front grille bar with Gold bowtie emblem and high-gloss Black grille inserts	–	–	–	●	–	–	–	–	–
– body-color front grille bar with Black bowtie emblem and high-gloss Black grille inserts	–	–	–	–	●	–	–	–	–
– high-gloss Black front grille bar with Black bowtie emblem and high-gloss Black grille inserts with small Z71 badge	–	–	–	–	–	●	–	–	–
– chrome front grille bar with Gold bowtie emblem and chrome grille inserts	–	–	–	–	–	–	●	–	–
– high-gloss Black front grille bar with Chevy flowtie emblem and high-gloss Black grille inserts with small ZR2 badge	–	–	–	–	–	–	–	●	–
– Galvano with Godric accents and Gold bowtie emblem	–	–	–	–	–	–	–	–	●
Headlamps – halogen reflector	●	●	●	–	–	–	–	–	–
– LED reflector headlamps with LED signature daytime running lamps and Amber tracer animation	–	–	–	●	●	●	–	–	–
– high-intensity LED reflector headlamps with LED signature curtain daytime running lamps and White tracer animation (ZR2 includes Black bezels)	–	–	–	–	–	–	●	●	●
Lighting – perimeter (WT requires available WT Safety Package; LT requires available Safety Package or Fleet Safety Package; RST and LT Trail Boss require available Safety Package)	○	–	–	○	○	○	●	●	●
Mirrors – manual-adjustable (Double Cab and Crew Cab)	●	–	–	–	–	–	–	–	–
– heated, power-adjustable (standard on Regular Cab; Double Cab and Crew Cab WT require available WT Convenience Package or WT Fleet Convenience Package)	○	●	●	●	●	●	–	–	–
– heated, power-adjustable, power-folding with memory and driver-side auto-dimming features, puddle lamps, and perimeter lighting	–	–	–	–	–	–	●	●	●
– vertical trairling, heated upper glass, power-adjustable, manual-folding and manual-extending with lower convex mirrors and integrated turn signal indicators, clearance lamps and auxiliary lighting; includes interior auto-dimming mirror (WT requires available WT Convenience Package, WT Fleet Convenience Package or WT Value Package and Trairling Package or pickup bed delete)	○	–	–	○	○	○	–	–	–
– vertical trairling, heated upper glass, power-adjustable, power-folding and manual-extending with lower convex mirrors and integrated turn signal indicators, puddle lamps, perimeter lighting, auxiliary lighting and memory; ZR2 and High Country include chrome mirror caps	–	–	–	–	–	–	○	○	○

	WT	CUSTOM	CUSTOM TB	LT	RST	LT TB	LTZ	ZR2 <sup>1</sup>	HIGH COUNTRY
<b>EXTERIOR (CONTINUED)</b>									
Mirror caps – Black	●	●	●	–	–	–	–	–	–
– high-gloss Black (WT requires available WT Safety Package)	○	–	–	–	●	●	–	●	–
– chrome (ZR2 and High Country require available vertical trairling mirrors)	–	–	–	●	–	–	●	○	○
– body-color	–	–	–	–	–	–	–	–	●
Moldings – Black window beltline	●	●	●	●	●	●	–	●	–
– stainless steel window beltline	–	–	–	–	–	–	●	–	●
Pickup bed – Durabed	●	●	●	●	●	●	●	●	●
– delete, includes backup alarm calibration, capped fuel fill, rear bumper delete and spare tire delete (requires Regular Cab Long Bed, 5.3L V8 [L84] and all-terrain tires; not available with Z71 Off-Road Package or Trairling Package)	○	–	–	–	–	–	–	–	–
Power outlet – 120-volt (up to 400 watts, shared with instrument panel 120-volt outlet), bed-mounted (WT requires available EZ Lift power lock and release tailgate; not available with pickup bed delete)	○	●	●	●	●	●	●	●	●
Recovery hooks <sup>2</sup> – Black; included on WT and LT 4x4 models (WT 2WD models require available WT Safety Package; LT 2WD models require available Safety Package or Fleet Safety Package; Custom Trail Boss requires available Realtree® Special Edition or Midnight Edition; LT Trail Boss requires available Midnight Edition)	○	●	○	○	●	○	●	–	–
– Performance Red (RST requires available Redline Edition)	–	–	●	–	○	●	–	●	–
– chrome	–	–	–	–	–	–	–	–	●
Tailgate – manual lift (deleted with pickup bed delete)	●	–	–	–	–	–	–	–	–
– EZ Lift, power lock and release (LTZ and High Country require available Multi-Flex Tailgate)	○	●	●	●	●	●	○	●	○
– power-up/-down tailgate function, power lock and release	–	–	–	○	○	○	●	○	●
– Multi-Flex, with six functional load/access features (WT, LTZ and High Country require available EZ Lift power lock and release tailgate; Custom not available with Rally Edition; LT, LT Trail Boss, LTZ, ZR2 and High Country not available with power-up/-down tailgate; RST not available with Rally Edition or power-up/-down tailgate)	○	○	○	○	○	○	○	○	○

<sup>1</sup> ZR2 has very limited availability. <sup>2</sup> To avoid the risk of injury, never use recovery hooks to tow a vehicle. For more information, see the Recovery Hooks section of your Owner's Manual.

## SPECIFICATIONS (CONTINUED)

● STANDARD ○ AVAILABLE – NOT AVAILABLE

	WT	CUSTOM	CUSTOM TB	LT	RST	LT TB	LTZ	ZR2 <sup>1</sup>	HIGH COUNTRY
<b>EXTERIOR (CONTINUED)</b>									
Tailgate and bed rail – protection cap	●	●	●	●	●	●	●	●	●
Taillamps – incandescent	●	●	●	●	–	–	–	–	–
– LED	–	–	–	–	●	●	●	●	●
Tie-downs – 12 fixed cargo tie-downs, rated at 500 lbs <sup>2</sup> per corner (deleted on WT with pickup bed delete)	●	●	●	●	●	●	●	●	●
Tire – carrier lock (deleted on WT with pickup bed delete)	●	●	●	●	●	●	●	●	●
– full-size spare (deleted on WT with pickup bed delete)	●	●	●	●	●	●	●	●	●
Tires – 255/70R17 all-season	●	–	–	●	–	–	–	–	–
– 265/70R17 all-terrain	○	–	–	○	–	–	–	–	–
– LT265/70R17 all-terrain	○	–	–	○	–	–	–	–	–
– 265/65R18 all-season (LT requires available 18" Bright Silver-painted aluminum wheels [RCV])	–	–	–	○	●	–	–	–	–
– 265/65R18 all-terrain (LT requires available 18" Bright Silver-painted aluminum wheels [RCV])	–	–	–	○	○	–	–	–	–
– 265/65R18 all-terrain, white outlined letter (LT requires available 18" Bright Silver-painted aluminum wheels [RCV])	–	–	–	○	○	–	–	–	–
– LT275/65R18 Goodyear Wrangler DuraTrac <sup>®</sup> mud-terrain (WT requires Double Cab or Crew Cab and available 5.3L V8 engine, Z71 Off-Road Package and 18" Bright Silver-painted aluminum wheels [RCV]; LT requires available 5.3L V8 engine, Z71 Off-Road Package and 18" Bright Silver-painted aluminum wheels [RCV]; LTZ requires available Z71 Off-Road Package and 18" Bright Silver-painted aluminum wheels [RCV])	○	–	●	○	–	●	○	–	–
– LT275/70R18 Goodyear Wrangler Territory <sup>®</sup> mud-terrain	–	–	–	–	–	–	–	●	–
– 275/60R20 all-season (LT and RST require available 20" aluminum wheels; High Country requires 2WD)	–	●	–	○	○	–	●	–	●
– 275/60R20 all-terrain; included on High Country 4x4 (Custom Trail Boss, LT, RST and LT Trail Boss require available 20" aluminum wheels)	–	○	○	○	○	○	○	–	○
– LT265/60R20 Goodyear Wrangler Territory mud-terrain (requires available 20" aluminum wheels)	–	–	○	–	–	○	–	–	–
– 275/50R22 all-season (LT, RST and LTZ require 22" wheels from Chevrolet Accessories; <sup>3</sup> High Country requires available 22" painted-aluminum wheels with chrome inserts [RPT] or 22" wheels from Chevrolet Accessories <sup>3</sup> )	–	–	–	○	○	–	○	–	○

	WT	CUSTOM	CUSTOM TB	LT	RST	LT TB	LTZ	ZR2 <sup>1</sup>	HIGH COUNTRY
<b>EXTERIOR (CONTINUED)</b>									
Wheelhouse liners – rear (WT not available on Regular Cab or 2WD Double Cab or Crew Cab models or with pickup bed delete; LT, RST and LT Trail Boss require available Protection Package) (limited availability; see dealer for details)	○	○	○	○	○	○	○	○	○
Wheels – 17" Ultra Silver-painted steel (RD6)	●	–	–	–	–	–	–	–	–
– 17" Bright Silver-painted aluminum (Q5U)	○	–	–	●	–	–	–	–	–
– 18" Bright Silver-painted aluminum (RCV) (WT requires Double Cab or Crew Cab and 5.3L V8 engine, Z71 Off-Road Package and LT275/65R18 Goodyear Wrangler DuraTrac mud-terrain tires; LTZ requires available Z71 Off-Road Package and LT275/65R18 Goodyear Wrangler DuraTrac mud-terrain tires)	○	–	–	○	●	–	○	–	–
– 18" high-gloss Black-painted aluminum (RD1)	–	–	●	–	–	●	–	–	–
– 18" machined-face aluminum with Black-painted spokes and Oxide Gold-painted outer ring accents (RCW)	–	–	–	–	–	–	–	●	–
– 18" gloss Black-painted aluminum (RQL)	–	–	–	–	–	–	–	○	–
– 20" Bright Silver-painted aluminum (NZP)	–	●	–	–	–	–	–	–	–
– 20" high-gloss Black-painted aluminum (RD5)	–	○	○	–	○	○	–	–	–
– 20" machined-face painted-aluminum with Grazen-painted pockets (NZN)	–	–	–	○	○	–	–	–	–
– 20" high-gloss Black-painted aluminum with Red accents (RPS) (requires available Redline Edition)	–	–	–	–	○	–	–	–	–
– 20" Sterling Silver-painted aluminum (RH0)	–	–	–	–	–	–	●	–	–
– 20" machined-aluminum with Charcoal pockets (NZV)	–	–	–	–	–	–	–	–	●
– 22" painted-aluminum with chrome inserts (RPT) (requires available Adaptive Ride Control suspension and 275/50R22 all-season tires)	–	–	–	–	–	–	–	–	○
Wipers – front variable-speed, intermittent	●	●	●	●	●	●	–	–	–
– front variable-speed, intermittent with Rainsense <sup>™</sup>	–	–	–	–	–	–	●	●	●

<sup>1</sup> ZR2 has very limited availability. <sup>2</sup> These maximum payload ratings are intended for comparison purposes only. Before you buy a vehicle or use it to haul people or cargo, carefully review the Vehicle Loading section of the Owner's Manual and check the carrying capacity of your specific vehicle on the label on the inside of the driver door jamb. <sup>3</sup> Chevrolet Accessories are dealer-installed and covered by the GM 3-year/36,000-mile (whichever comes first) New Vehicle Limited Warranty when ordered with your new Silverado. See your dealer for details.





## SPECIFICATIONS (CONTINUED)

● STANDARD ○ AVAILABLE – NOT AVAILABLE

	WT	CUSTOM	CUSTOM TB	LT	RST	LT TB	LTZ	ZR2 <sup>1</sup>	HIGH COUNTRY
<b>INTERIOR (CONTINUED)</b>									
Steering column – manual tilt-wheel (LT requires available Fleet LT Base Content Package Delete)	●	●	●	○	–	–	–	–	–
– manual tilt/telescoping	–	–	–	●	●	●	–	●	–
– power tilt/telescoping (ZR2 requires available Technology Package)	–	–	–	–	–	–	●	○	●
Steering wheel – mounted audio, cruise and phone controls	–	–	–	●	●	●	●	●	●
– leather-wrapped (deleted on LT with available Fleet LT Base Content Package Delete)	–	–	–	●	●	●	●	●	●
– heated (deleted on LT with available Fleet LT Base Content Package Delete; feature will not function on certain models without dealer retrofit; see dealer or window label for details)	–	–	–	○	○	○	○	○	○
Sunroof – power (Crew Cab) (RST and LT Trail Boss require available Convenience Package II; not available with Government order)	–	–	–	–	○	○	○	○	○
Temperature display – outside	●	●	●	●	●	●	●	●	●
Trailer Camera Provisions <sup>2</sup> (LT, RST and LT Trail Boss require available Safety Package)	–	–	–	○	○	○	●	●	●
Universal Home Remote – programmable, includes garage door opener (LT, RST and LT Trail Boss require available Convenience Package II; LTZ requires available LTZ Convenience Package II)	–	–	–	○	○	○	○	●	●
Upfitter switches – five 30-amp and two 20-amp circuits for installation of aftermarket accessories <sup>3</sup>	○	○	○	○	–	–	–	–	–
Windows – power with driver express-up/-down, all others express-down	●	●	●	●	●	●	–	–	–
– power with driver and front passenger express-up/-down, rear express-down	–	–	–	–	–	–	●	●	●
– power-sliding rear with defogger (LT, RST and LT Trail Boss require available Convenience Package II; LTZ requires available LTZ Convenience Package II)	–	–	–	○	○	○	○	●	●

	WT	CUSTOM	CUSTOM TB	LT	RST	LT TB	LTZ	ZR2 <sup>1</sup>	HIGH COUNTRY
<b>SEATING</b>									
Seats – front 40/20/40 split-bench with covered storage armrest and lockable underseat storage (LTZ requires available Fleet LTZ Base Content Delete)	●	●	●	●	●	●	○	–	–
– front bucket seats with center console (LT requires available 5.3L V8 [L84] or Duramax 3.0L Turbo-Diesel I-6 [LM2]; RST and LT Trail Boss require available 5.3L V8 [L84], 6.2L V8 [L87] or Duramax 3.0L Turbo-Diesel I-6 [LM2])	–	–	–	○	○	○	●	●	●
– rear 60/40 folding bench (Double Cab and Crew Cab on WT)	●	●	●	●	●	●	–	–	–
– rear 60/40 folding bench with seatback storage on left and right side and center foldout armrest with two cup holders (Crew Cab)	–	○	○	○	○	○	–	–	–
– rear 60/40 folding bench with seatback storage on left and right side, center foldout armrest with two cup holders and full cab width underseat storage (WT, Custom and Custom Trail Boss require available Cloth Rear Seat with Storage Package; LT, RST and LT Trail Boss require available Cloth Rear Seat with Storage Package or Uplevel Rear Seat with Storage Package) (Crew Cab)	○	○	○	○	○	○	●	●	●
Seat – driver 4-way manual adjuster (LT requires available Fleet LT Base Content Package Delete)	●	–	–	○	–	–	–	–	–
– front passenger 4-way manual adjuster	●	●	●	●	●	●	–	–	–
– driver 10-way power adjuster with power lumbar control (WT requires available WT Fleet Convenience Package, cloth trim [HOU] and 120-volt power outlet)	○	●	●	●	●	●	●	●	●
– front passenger 10-way power adjuster with power lumbar control	–	–	–	–	–	–	●	●	●
Heated seats – driver and front outboard passenger (feature will not function on certain models without dealer retrofit; see dealer or window label for details)	–	–	–	○	○	○	–	–	–
Heated and ventilated seats – driver and front passenger (feature will not function on certain models without dealer retrofit; see dealer or window label for details)	–	–	–	–	–	–	○	●	●
Heated rear outboard seating positions (LTZ requires available LTZ Convenience Package II; feature will not function on certain models without dealer retrofit; see dealer or window label for details)	–	–	–	–	–	–	○	●	○

<sup>1</sup> ZR2 has very limited availability. <sup>2</sup> Safety or driver assistance features are no substitute for the driver's responsibility to operate the vehicle in a safe manner. Read the vehicle Owner's Manual for important feature limitations and information. <sup>3</sup> Equipment from independent suppliers is not covered by the GM New Vehicle Limited Warranty. GM is not responsible for the safety or quality of independent supplier alterations.

## SPECIFICATIONS (CONTINUED)

● STANDARD ○ AVAILABLE – NOT AVAILABLE

	WT	CUSTOM	CUSTOM TB	LT	RST	LT TB	LTZ	ZR2 <sup>1</sup>	HIGH COUNTRY
<b>ENTERTAINMENT</b>									
Audio – 2-speaker system (Regular Cab)	●	–	–	–	–	–	–	–	–
– 6-speaker system (Double Cab and Crew Cab; LTZ requires available Fleet LTZ Base Content Delete)	●	●	●	●	●	●	○	–	–
– 7-speaker Bose premium audio system with Richbass subwoofer; High Country includes stainless steel speaker grilles (RST and LT Trail Boss require available Convenience Package II)	–	–	–	–	○	○	●	●	●
Chevrolet Infotainment 3 system <sup>2</sup> with 7-inch diagonal color touch-screen, AM/FM stereo, Bluetooth <sup>®</sup> audio streaming <sup>3</sup> for two active devices, voice command pass-through to compatible phone, and Apple CarPlay <sup>®4</sup> and Android Auto <sup>™5</sup> compatibility	●	●	●	–	–	–	–	–	–
Chevrolet Infotainment 3 Premium system <sup>2</sup> with 13.4-inch diagonal HD color touch-screen and Google built-in <sup>6</sup> compatibility, AM/FM stereo, Bluetooth audio streaming <sup>3</sup> for two active devices, advanced voice recognition and available In-Vehicle Apps <sup>7</sup>	–	–	–	●	●	●	●	●	●

	WT	CUSTOM	CUSTOM TB	LT	RST	LT TB	LTZ	ZR2 <sup>1</sup>	HIGH COUNTRY
<b>ENTERTAINMENT (CONTINUED)</b>									
SiriusXM <sup>®8</sup> – 3-month trial subscription (WT requires available OnStar <sup>9</sup> )	○	●	●	–	–	–	–	–	–
SiriusXM with 360L <sup>®10</sup> – 3-month trial subscription	–	–	–	●	●	●	●	●	●
USB ports <sup>11</sup> – two on instrument panel	●	●	●	●	●	●	●	●	●
– two inside center console (LT, RST and LT Trail Boss require available front bucket seats with center console)	–	–	–	○	○	○	●	●	●
– two, charge-only, rear	–	–	–	●	●	●	●	●	●
Available Wi-Fi <sup>®</sup> Hotspot <sup>12</sup> for up to seven devices, includes 1 month of unlimited data (WT requires available OnStar <sup>9</sup> )	–	–	–	●	●	●	●	●	●
Chevrolet Connected Access <sup>13</sup> with up to 10 years of standard connectivity, which currently enables features such as Vehicle Diagnostics and Dealer Maintenance Notification (WT requires available OnStar <sup>9</sup> )	○	●	●	●	●	●	●	●	●
Wireless Apple CarPlay <sup>4</sup> and wireless Android Auto <sup>5</sup> compatibility (WT requires available OnStar <sup>9</sup> )	○	●	●	●	●	●	●	●	●
Wireless charging <sup>14</sup> (LT, RST and LT Trail Boss require available front bucket seats with center console)	–	–	–	○	○	○	●	●	●

<sup>1</sup> ZR2 has very limited availability. <sup>2</sup> Chevrolet Infotainment System functionality varies by model. Full functionality requires compatible Bluetooth and smartphone, and USB connectivity for some devices. <sup>3</sup> Go to [my.chevrolet.com/learnAbout/bluetooth](http://my.chevrolet.com/learnAbout/bluetooth) to find out which phones are compatible with the vehicle. Full Bluetooth feature functionality varies by device, model and software version. <sup>4</sup> Vehicle user interface is a product of Apple and its terms and privacy statements apply. Requires compatible iPhone and data plan rates apply. <sup>5</sup> Vehicle user interface is a product of Google and its terms and privacy statements apply. To use Android Auto on your car display, you'll need an Android phone running Android 6 or higher, an active data plan, and the Android Auto app. <sup>6</sup> Google built-in services are subject to limitations and availability may vary by vehicle, infotainment system and location. Select service plan required. Certain Google actions and functionality may require account linking. User terms and privacy statements apply. <sup>7</sup> Third-party trademarks are the property of their respective third-party owners and used under agreement. Requires active service plan and paid AT&T vehicle data plan. Visit [onstar.com](http://onstar.com) for details and limitations. <sup>8</sup> If you decide to continue service after your trial, your selected subscription plan will automatically renew thereafter. You will be charged at then-current rates. Fees and taxes apply. To cancel you must call SiriusXM at 1-866-635-2349. See SiriusXM Customer Agreement for complete terms at [siriusxm.com](http://siriusxm.com). All fees and programming subject to change. <sup>9</sup> When you select a monthly plan within 30 days of activating your 1-month trial, you'll receive the next 2 months of the plan you select at no additional charge when you associate an approved payment method on file to your account and authorize recurring payments for your service plan. The amount and frequency of each recurring payment is based upon the service(s) and payment interval(s) you select from the options provided. After the trial expires, OnStar will automatically bill your payment method monthly at then-current standard monthly rates. Plans containing 4G LTE data will be billed every 30 days by AT&T. You may cancel at any time by pushing your blue OnStar button or calling 1-888-466-7827. May not be combined with other offers or retroactively applied. Offer subject to change. <sup>10</sup> Certain features require a SiriusXM subscription and the Chevrolet Connected Access plan. See [siriusxm.com](http://siriusxm.com) and [onstar.com](http://onstar.com) for details and limitations. <sup>11</sup> Not compatible with all devices. <sup>12</sup> Service varies with conditions and location. Requires active service and paid AT&T data plan. Visit [onstar.com](http://onstar.com) for details and limitations. Availability subject to change. <sup>13</sup> Standard connectivity available only to original purchaser for up to 10 years. Connected Access services are subject to change. Does not include emergency or security services. Diagnostic capabilities vary by model and service plan. Message and data rates may apply. Requires contact method on file and enrollment to receive alerts. Not all issues will deliver alerts. Visit [onstar.com](http://onstar.com) for details and limitations. <sup>14</sup> The system wirelessly charges one compatible mobile device. Some phones have built-in wireless charging technology and others require a special adaptor/back cover. To check for phone or other device compatibility, see [my.chevrolet.com/learn](http://my.chevrolet.com/learn) or consult your carrier.

## SPECIAL EDITIONS



Rally Edition.



Realtree® Special Edition.

● STANDARD ○ AVAILABLE – NOT AVAILABLE

	WT	CUSTOM	CUSTOM TB	LT	RST	LT TB	LTZ	ZR2 <sup>1</sup>	HIGH COUNTRY
<b>EXTERIOR</b>									
<b>Rally Edition</b>	-	○	-	-	○	-	-	-	-
Black badges, Black headlamp bezels, Black Chevrolet lettered tailgate, Black rally stripes, 4-inch Black round assist steps, Black exhaust tip(s) and 20" high-gloss Black-painted aluminum wheels (RD5); Custom includes Black bowtie emblem on grille and steering wheel, and Chevytec spray-on bedliner with logo; RST includes Protection Package (Custom and RST not available with any other assist steps or Multi-Flex Tailgate; RST requires Jet Black interior and not available with Z71 Off-Road and Protection Package and Z71 Off-Road Package) (available with Summit White, Silver Ice Metallic, Red Hot, Glacier Blue Metallic or Black exterior colors)									
<b>Realtree Special Edition (Crew Cab Short Bed)</b>	-	-	○	-	-	-	-	-	-
Realtree graphics on hood, doors, bed side and tailgate, Black recovery hooks <sup>2</sup> ; Chevytec spray-on bedliner with Realtree logo, Realtree interior door trim, Black badges including Silverado, Custom, and Z71, Black headlamp bezels, 4-inch Black round assist steps, dual-outlet exhaust with Black rectangular tips and all-weather floor liners with Z71 logo (requires available 5.3L V8 [L84]) (available with Summit White, Sand Dune Metallic or Black exterior colors)									

<sup>1</sup> ZR2 has very limited availability. <sup>2</sup> To avoid the risk of injury, never use recovery hooks to tow a vehicle. For more information, see the Recovery Hooks section of your Owner's Manual.



## SPECIAL EDITIONS (CONTINUED)



Midnight Edition.



Redline Edition.

● STANDARD ○ AVAILABLE – NOT AVAILABLE

	WT	CUSTOM	CUSTOM TB	LT	RST	LT TB	LTZ	ZR2 <sup>1</sup>	HIGH COUNTRY
<b>EXTERIOR (CONTINUED)</b>									
<b>Midnight Edition</b>	-	-	○	-	-	○	-	-	-
Black Silverado, Z71 and trim badges, Black headlamp bezels, Black recovery hooks; dual-outlet exhaust with Black rectangular tips and Black exterior color; Custom Trail Boss includes Chevytec spray-on bedliner with logo, all-weather floor liners with Z71 logo and Silver-hammer interior trim kit (Custom Trail Boss and LT Trail Boss require available 5.3L V8 [L84]; LT Trail Boss requires Jet Black interior color and available LT Trail Boss Premium Package, Leather Package, front bucket seats with center console and Convenience Package II)									
<b>Redline Edition (Double Cab or Crew Cab Short Bed)</b>	-	-	-	-	○	-	-	-	-
High-gloss Black door handles and grille, Black headlamp bezels, Black Silverado badges with Red outline on fender and tailgate, Black RST badge on tailgate, Black Chevrolet lettered tailgate, Red recovery hooks; Red stripes on outside rearview mirrors, 20" high-gloss Black-painted aluminum wheels with Red accents (RPS), 275/60R20 all-season or all-terrain tires, 4-inch Black round assist steps, dual-outlet exhaust with Black rectangular tips and Protection Package; includes Black 6.2L V8 hood badge with available 6.2L V8 (L87) (requires available 5.3L V8 [L84], 6.2L V8 [L87] or Duramax 3.0L Turbo-Diesel I-6 [LM2]; not available with Z71 Off-Road and Protection Package and Z71 Off-Road Package) (available with Summit White, Silver Ice Metallic or Black exterior colors)									

<sup>1</sup> ZR2 has very limited availability. <sup>2</sup> To avoid the risk of injury, never use recovery hooks to tow a vehicle. For more information, see the Recovery Hooks section of your Owner's Manual.

## AVAILABLE PACKAGES

● STANDARD ○ AVAILABLE – NOT AVAILABLE

	WT	CUSTOM	CUSTOM TB	LT	RST	LT TB	LTZ	ZR2 <sup>1</sup>	HIGH COUNTRY
<b>MECHANICAL</b>									
<b>Work Truck Package</b>	○	-	-	○	-	-	-	-	-
Skid plates and heavy-duty air filter (WT requires available all-terrain tires; not available with Z71 Off-Road Package or Snow Plow Prep Package; LT requires available all-terrain tires and 4x4; not available with Z71 Off-Road and Protection Package or Z71 Off-Road Package)									
<b>Special Service Package</b>	○	-	-	-	-	-	-	-	-
High-capacity air filter, 220-amp alternator, instrument panel- and bed-mounted power outlets (400 watts shared), keyless remote panic button exterior lights/horn disable, and surveillance mode interior and exterior lighting (Crew Cab; requires 5.3L V8 [L84], EZ Lift power lock and release tailgate, and WT Fleet Convenience Package or WT Convenience Package)									
<b>Snow Plow Prep Package (4x4 models)</b>	○	-	-	○	-	-	○	-	-
Power feed for backup and roof emergency light, 220-amp alternator, heavy-duty air filter, skid plates and heavy-duty front springs (WT requires available 5.3L V8 [L84] and 17" Ultra Silver-painted steel wheels [RD6]; LT and LTZ require available Work Truck Package or Z71 Off-Road Package and 5.3L V8 [L84]; LTZ requires available Z71 Off-Road Package, 5.3L V8 [L84] and 18" Bright Silver-Painted Aluminum Wheels [RCV]; WT not available with Regular Cab Standard Bed; LT and LTZ not available with Max Trailing Package)									
<b>Trailer Package</b>	○	●	●	●	●	●	●	●	●
Trailer hitch, 7-pin and 4-pin connectors, and Hitch Guidance <sup>2</sup>									
<b>Fleet LT Trailing Package Delete</b>	-	-	-	○	-	-	-	-	-
Deletes Trailing Package (requires Fleet or Government order)									
<b>Max Trailing Package</b>	-	-	-	○	○	-	○	-	○
9.76" rear axle, 3.42 axle ratio (3.73 axle ratio with Duramax 3.0L Turbo-Diesel I-6 [LM2]), enhanced cooling radiator, revised shock tuning for increased control, heavier-duty rear springs, increased RGAWR <sup>3</sup> and 220-amp alternator; LT and RST include integrated trailer brake controller (LT requires available 5.3L V8 [L84] or Duramax 3.0L Turbo-Diesel I-6 [LM2] and 18" or 20" wheels; RST requires available 5.3L V8 [L84], 6.2L V8 [L87] or Duramax 3.0L Turbo-Diesel I-6 [LM2] and 18" or 20" wheels [Double Cab requires 6.2L V8 [L87] with 20" wheels]; LTZ requires 5.3L V8 [L84], available 6.2L V8 [L87] or Duramax 3.0L Turbo-Diesel I-6 [LM2]; High Country requires 4x4 and available 6.2L V8 [L87] or Duramax 3.0L Turbo-Diesel I-6 [LM2]; not available with Z71 Off-Road Package or 22" wheels)									

	WT	CUSTOM	CUSTOM TB	LT	RST	LT TB	LTZ	ZR2 <sup>1</sup>	HIGH COUNTRY
<b>MECHANICAL (CONTINUED)</b>									
<b>Z71 Off-Road Package (4x4 models)</b>	○	-	-	○	○	-	○	-	○
Off-Road suspension, Hill Descent Control, skid plates and heavy-duty air filter; WT includes Z71 hard badge, automatic locking rear differential and 2-speed transfer case; LT and RST include Z71 hard badge, dual-outlet exhaust with polished rectangular tips, 18" Bright Silver-painted aluminum wheels (RCV), 265/65R18 all-terrain tires and 2-speed transfer case; LTZ includes Z71 hard badge, dual-outlet exhaust with polished rectangular tips, 275/60R20 all-terrain tires and 2-speed transfer case; High Country does not include Z71 badge (WT requires Double Cab or Crew Cab, available 5.3L V8 [L84], all-terrain or LT275/65R18 Goodyear Wrangler DuraTrac <sup>®</sup> mud-terrain tires, and Trailing Package; LT and RST not available with 2.7L Turbo High-Output [L3B], Max Trailing Package or 22" wheels; LTZ not available with Max Trailing Package or 22" wheels; High Country not available with High Country Premium Package, Max Trailing Package or 22" wheels)									
<b>Diesel Off-Road Package (Crew Cab 4x4 models)</b>	-	-	-	○	○	-	-	-	-
3.73 axle ratio, LT275/65R18 Goodyear Wrangler DuraTrac mud-terrain tires, chrome wheel-to-wheel assist steps and dealer-installed Hard Folding Tonneau Cover by REV <sup>4</sup> (requires available Duramax 3.0L Turbo-Diesel I-6 [LM2] and Z71 Off-Road Package; not available with Max Trailing Package, Z71 Off-Road and Protection Package, 20" machined-face painted-aluminum wheels with Grazen-painted pockets [NZN], 20" all-season or all-terrain tires, any other assist steps, or any other tonneau cover; LT not available with Snow Plow Prep Package; RST not available with Rally Edition)									
<b>EXTERIOR</b>									
<b>Protection Package</b>	-	-	-	○	○	○	-	-	-
Chevytec spray-on bedliner with logo and rear wheelhouse liners (limited availability; see dealer for details) (LT and RST require available all-weather floor liners)									
<b>Z71 Off-Road and Protection Package (4x4 models)</b>	-	-	-	○	○	-	○	-	-
Z71 Off-Road Package; LT and RST include Protection Package; LTZ includes all-terrain tires and Chevytec spray-on bedliner with logo (LT requires available all-terrain tires and 5.3L V8 [L84] or Duramax 3.0L Turbo-Diesel I-6 [LM2]; RST requires available all-terrain tires and 5.3L V8 [L84], 6.2L V8 [L87] or Duramax 3.0L Turbo-Diesel I-6 [LM2]; not available with Max Trailing Package)									

<sup>1</sup> ZR2 has very limited availability. <sup>2</sup> Safety or driver assistance features are no substitute for the driver's responsibility to operate the vehicle in a safe manner. Read the vehicle Owner's Manual for important feature limitations and information. <sup>3</sup> Rear Gross Axle Weight Rating. <sup>4</sup> Non-GM warranty. Limited warranty by REV, 3 years. For more information, contact your dealer. Dealer-installed accessory.

## AVAILABLE PACKAGES (CONTINUED)

● STANDARD ○ AVAILABLE – NOT AVAILABLE

	WT	CUSTOM	CUSTOM TB	LT	RST	LT TB	LTZ	ZR2 <sup>1</sup>	HIGH COUNTRY
<b>INTERIOR</b>									
<b>WT Convenience Package</b>	○	-	-	-	-	-	-	-	-
Deep-tinted windows behind front doors, rear-window defogger and cruise control; Double Cab and Crew Cab include heated, power-adjustable outside mirrors									
<b>WT Fleet Convenience Package</b>	○	-	-	-	-	-	-	-	-
Cruise control; Double Cab and Crew Cab include heated, power-adjustable outside mirrors									
<b>WT Value Package</b>	○	-	-	-	-	-	-	-	-
WT Convenience Package and Trailing Package									
<b>WT Safety Package</b>	○	-	-	-	-	-	-	-	-
Rear Park Assist <sup>2</sup> (feature will not function on certain models without dealer retrofit; see dealer or window label for details), Lane Change Alert with Side Blind Zone Alert; Rear Cross Traffic Braking; Rear Pedestrian Alert <sup>2</sup> ; chrome front and rear bumpers, high-gloss Black mirror caps, and perimeter lighting; 2WD models include recovery hooks <sup>3</sup> (requires available WT Convenience Package, WT Fleet Convenience Package or WT Value Package and 120-volt bed- and instrument panel-mounted power outlets [400 watts shared])									
<b>Custom Value Package</b>	-	●	-	-	-	-	-	-	-
Custom Convenience Package and Trailing Package									
<b>Custom Convenience Package</b>	-	●	●	-	-	-	-	-	-
Remote vehicle starter system, unauthorized entry theft-deterrent system, rear-window defogger, EZ Lift power lock and release tailgate, and LED cargo area lighting									
<b>Cloth Rear Seat with Storage Package (Crew Cab)</b>	○	○	○	○	○	○	-	-	-
Rear in-seatback left and right storage compartments and center foldout armrest with two cup holders (WT requires available color-keyed carpeting)									

	WT	CUSTOM	CUSTOM TB	LT	RST	LT TB	LTZ	ZR2 <sup>1</sup>	HIGH COUNTRY
<b>INTERIOR (CONTINUED)</b>									
<b>Uplevel Rear Seat with Storage Package (Crew Cab)</b>	-	-	-	○	○	○	●	●	●
Underseat storage, rear in-seatback left and right storage compartments and center foldout armrest with two cup holders (LT, RST and LT Trail Boss require available Leather Package)									
<b>Convenience Package</b>	-	-	-	●	●	●	-	-	-
Dual-zone automatic climate control, 10-way power driver seat adjuster with power lumbar control, leather-wrapped steering wheel with mounted audio, cruise and phone controls, manual tilt/telescoping steering column, 120-volt power outlet on instrument panel (up to 400 watts, shared with cargo bed 120-volt outlet), two charge-only USB ports <sup>4</sup> in second row, rear-window defogger, Keyless Open and Start, remote vehicle starter system, unauthorized entry theft-deterrent system, heated driver and front outboard passenger seats (feature will not function on certain models without dealer retrofit; see dealer or window label for details) and heated steering wheel (feature will not function on certain models without dealer retrofit; see dealer or window label for details)									
<b>Convenience Package II</b>	-	-	-	○	○	○	-	-	-
Universal Home Remote, power-sliding rear window, Hitch Guidance with Hitch View <sup>2</sup> ; integrated trailer brake controller and Trailing App; RST and LT Trail Boss include Bose premium 7-speaker sound system (RST and LT Trail Boss require available front bucket seats with center console; not available on LT with Fleet LT Base Content Package Delete)									
<b>Fleet LT Base Content Package Delete</b>	-	-	-	○	-	-	-	-	-
Deletes All Star Edition and Convenience Package (requires Fleet or Government order)									
<b>Leather Package</b>	-	-	-	○	○	○	-	-	-
Leather-appointed front seats; Crew Cab includes Uplevel Rear Seat with Storage Package (LT requires available Convenience Package II; RST and LT Trail Boss require available front bucket seats with center console and Convenience Package II)									

<sup>1</sup> ZR2 has very limited availability. <sup>2</sup> Safety or driver assistance features are no substitute for the driver's responsibility to operate the vehicle in a safe manner. Read the vehicle Owner's Manual for important feature limitations and information. <sup>3</sup> To avoid the risk of injury, never use recovery hooks to tow a vehicle. For more information, see the Recovery Hooks section of your Owner's Manual. <sup>4</sup> Not compatible with all devices.

## AVAILABLE PACKAGES (CONTINUED)

● STANDARD ○ AVAILABLE – NOT AVAILABLE

	WT	CUSTOM	CUSTOM TB	LT	RST	LT TB	LTZ	ZR2 <sup>1</sup>	HIGH COUNTRY
<b>INTERIOR (CONTINUED)</b>									
<b>Remote Start Package</b>	-	-	-	○	-	-	-	-	-
Remote vehicle starter system, unauthorized entry theft-deterrent system and rear-window defogger (included with Convenience Package; available with Fleet LT Base Content Package)									
<b>Fleet Safety Package</b>	-	-	-	○	-	-	-	-	-
Lane Change Alert with Side Blind Zone Alert <sup>2</sup> ; Rear Cross Traffic Braking <sup>2</sup> ; perimeter lighting and Rear Park Assist <sup>2</sup> (feature will not function on certain models without dealer retrofit, see dealer or window label for details); 2WD models include front recovery hooks <sup>3</sup> (requires available Convenience Package II; not available with Safety Package)									
<b>Safety Package</b>	-	-	-	○	○	○	●	-	-
HD Surround Vision <sup>2</sup> ; Trailer Camera Provisions <sup>2</sup> ; Trailer Side Blind Zone Alert <sup>2</sup> ; Rear Cross Traffic Braking <sup>1</sup> ; Rear Pedestrian Alert <sup>2</sup> and perimeter lighting; LT 2WD models include front recovery hooks <sup>3</sup> ; LT, RST and LT Trail Boss include Rear Park Assist <sup>2</sup> ; LTZ includes Front and Rear Park Assist <sup>2</sup> (Rear Park Assist and Front and Rear Park Assist will not function on certain models without dealer retrofit; see dealer or window label for details) (LT, RST and LT Trail Boss require available integrated trailer brake controller)									
<b>All Star Edition</b>	-	-	-	●	●	-	-	-	-
Convenience Package (available in Arkansas, Louisiana, New Mexico, Oklahoma and Texas with Texas Edition badging)									
<b>All Star Edition Plus</b>	-	-	-	○	○	-	-	-	-
Convenience Package II and 20" machined-face painted-aluminum wheels with Graze-painted pockets (NZN) (RST requires available front bucket seats with center console; not available with Texas Edition Plus or Diesel Off-Road Package)									
<b>Texas Edition Plus</b>	-	-	-	○	○	-	-	-	-
Convenience Package II, 20" machined-face painted-aluminum wheels with Graze-painted pockets (NZN) and Texas Edition badging (RST requires available front bucket seats with center console; available in Arkansas, Louisiana, New Mexico, Oklahoma and Texas; not available with All Star Edition Plus or Diesel Off-Road Package)									

	WT	CUSTOM	CUSTOM TB	LT	RST	LT TB	LTZ	ZR2 <sup>1</sup>	HIGH COUNTRY
<b>INTERIOR (CONTINUED)</b>									
<b>RST All Star Premium Package</b>	-	-	-	-	○	-	-	-	-
All Star Edition Plus, Safety Package, Adaptive Cruise Control <sup>2</sup> ; Leather Package and Protection Package (requires available front bucket seats with center console; not available with Texas Edition Plus, RST Texas Edition Premium Package, Redline Edition or Diesel Off-Road Package)									
<b>RST Texas Edition Premium Package</b>	-	-	-	-	○	-	-	-	-
All Star Edition Plus, Safety Package, Adaptive Cruise Control <sup>2</sup> ; Leather Package, Protection Package and Texas Edition badging (requires available front bucket seats with center console; available in Arkansas, Louisiana, New Mexico, Oklahoma and Texas; not available with All Star Edition Plus, RST All Star Premium Package, Redline Edition or Diesel Off-Road Package)									
<b>LT Trail Boss Premium Package</b>	-	-	-	-	-	○	-	-	-
Convenience Package II, Safety Package, Leather Package, Protection Package and power-up/-down tailgate (requires available front bucket seats with center console)									
<b>LTZ Convenience Package</b>	-	-	-	-	-	-	●	-	-
Front bucket seats with center console, 10-way power front seat adjusters with power lumbar control, Bose premium 7-speaker sound system, power tilt/telescoping steering column, wireless charging <sup>4</sup> ; two additional USB ports <sup>5</sup> in center console, and heated and ventilated front seats (feature will not function on certain models without dealer retrofit; see dealer or window label for details)									
<b>LTZ Plus Package</b>	-	-	-	-	-	-	●	-	-
LTZ Convenience Package and Safety Package (available in Arkansas, Louisiana, New Mexico, Oklahoma and Texas with Texas Edition badging)									
<b>Fleet LTZ Base Content Delete</b>	-	-	-	-	-	-	○	-	-
Deletes LTZ Plus Package and LTZ Convenience Package (requires Fleet or Government order; not available with 6.2L V8 [L87])									

<sup>1</sup> ZR2 has very limited availability. <sup>2</sup> Safety or driver assistance features are no substitute for the driver's responsibility to operate the vehicle in a safe manner. Read the vehicle Owner's Manual for important feature limitations and information. <sup>3</sup> To avoid the risk of injury, never use recovery hooks to tow a vehicle. For more information, see the Recovery Hooks section of your Owner's Manual. <sup>4</sup> The system wirelessly charges one compatible mobile device. Some phones have built-in wireless charging technology and others require a special adaptor/back cover. To check for phone or other device compatibility, see [my.chevrolet.com/learn](http://my.chevrolet.com/learn) or consult your carrier. <sup>5</sup> Not compatible with all devices.



## AVAILABLE PACKAGES (CONTINUED)

● STANDARD ○ AVAILABLE – NOT AVAILABLE

	WT	CUSTOM	CUSTOM TB	LT	RST	LT TB	LTZ	ZR2 <sup>1</sup>	HIGH COUNTRY
<b>INTERIOR (CONTINUED)</b>									
<b>LTZ Convenience Package II</b>	-	-	-	-	-	-	○	-	-
Universal Home Remote, Adaptive Cruise Control <sup>2</sup> ; power-sliding rear window and heated rear outboard seats (feature will not function on certain models without dealer retrofit; see dealer or window label for details) (not available with Fleet LTZ Base Content Delete)									
<b>LTZ Premium Package</b>	-	-	-	-	-	-	○	-	-
LTZ Convenience Package II and power sunroof (not available with LTZ Premium Texas Edition or Fleet LTZ Base Content Delete)									
<b>LTZ Premium Texas Edition</b>	-	-	-	-	-	-	○	-	-
LTZ Convenience Package II, power sunroof and Texas Edition badging (available in Arkansas, Louisiana, New Mexico, Oklahoma and Texas; not available with LTZ Premium Package or Fleet LTZ Base Content Delete)									
<b>Technology Package</b>	-	-	-	-	-	-	○	○	○
Rear Camera Mirror <sup>2</sup> and Head-Up Display; LTZ includes Bed View Camera <sup>2</sup> ; ZR2 includes Adaptive Cruise Control <sup>2</sup> and power tilt/telescoping steering column; High Country includes Adaptive Cruise Control <sup>2</sup> and Enhanced Automatic Emergency Braking <sup>2</sup> (LTZ requires available LTZ Convenience Package II, LTZ Premium Package or LTZ Premium Texas Edition; limited availability on High Country)									

	WT	CUSTOM	CUSTOM TB	LT	RST	LT TB	LTZ	ZR2 <sup>1</sup>	HIGH COUNTRY
<b>INTERIOR (CONTINUED)</b>									
<b>High Country Premium Package</b>	-	-	-	-	-	-	-	-	○
Power sunroof, 22" painted-aluminum wheels with chrome inserts (RPT), 275/50R22 all-season tires and all-weather floor liners (requires available Adaptive Ride Control suspension; not available with Z71 Off-Road Package or Max Trailering Package)									
<b>High Country Premium Package II (limited availability)</b>	-	-	-	-	-	-	-	-	○
High Country Premium Package, Technology Package, Super Cruise <sup>3</sup> hands-free driver assistance technology and power-retractable assist steps (requires Crew Cab Short Bed and available 6.2L V8 [L87] or Duramax 3.0L Turbo-Diesel I-6 [LM2] and Adaptive Ride Control suspension; not available with Z71 Off-Road Package or Max Trailering Package)									

<sup>1</sup> ZR2 has very limited availability. <sup>2</sup> Safety or driver assistance features are no substitute for the driver's responsibility to operate the vehicle in a safe manner. Read the vehicle Owner's Manual for important feature limitations and information. <sup>3</sup> Always pay attention while driving and when using Super Cruise. Do not use a hand-held device. Requires active Super Cruise plan or trial. Terms apply. Visit [chevrolet-supercruise.com](http://chevrolet-supercruise.com) for compatible roads and full details.

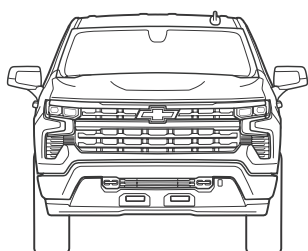
## SPECIFICATIONS (CONTINUED)

### MAXIMUM CAPACITIES

	REGULAR CAB	DOUBLE CAB	CREW CAB
Fuel tank (approximate)	24 gallons – Standard Bed 28 gallons – Long Bed	22 gallons – 2WD Duramax 24 gallons	22 gallons – Short Bed 2WD Duramax 24 gallons
Cargo volume <sup>1</sup>	71.7 cubic feet – Standard Bed 89.1 cubic feet – Long Bed	71.7 cubic feet – Standard Bed	62.9 cubic feet – Short Bed 71.7 cubic feet – Standard Bed

### DIMENSIONS

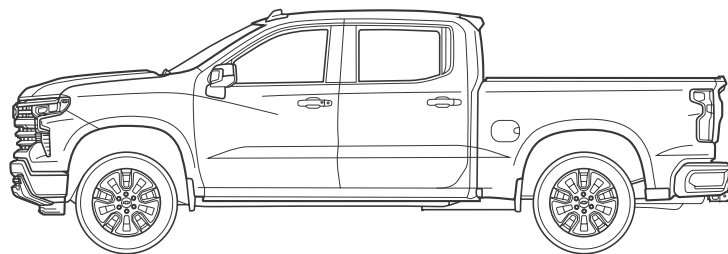
	REGULAR CAB	DOUBLE CAB	CREW CAB
<b>A</b> – Width	81.1"	81.2"	81.2"
<b>B</b> – Height	75.7" – Standard Bed 2WD 75.9" – Standard Bed 4x4 75.6" – Long Bed	75.6"	75.5" – Short Bed 78.4" – Short Bed Trail Boss 78.7" – Short Bed ZR2 <sup>2</sup> 75.4" – Standard Bed 78.2" – Standard Bed Trail Boss
<b>C</b> – Wheelbase	126.5" – Standard Bed 139.6" – Long Bed	147.5"	147.4" – Short Bed 147.5" – Short Bed Trail Boss/ZR2 <sup>2</sup> 157.0" – Standard Bed 157.1" – Standard Bed Trail Boss
<b>D</b> – Length	210.9" – Standard Bed 229.6" – Long Bed	231.9"	231.9" – Short Bed 232.9" – Short Bed Trail Boss 232.8" – Short Bed ZR2 <sup>2</sup> 241.4" – Standard Bed 242.4" – Standard Bed Trail Boss
<b>E</b> – Inside bed height	22.4"	22.4"	22.4"
<b>F</b> – Bed width wall to wall	71.4"	71.4"	71.4"
<b>G</b> – Inside width between wheelhousings	50.6"	50.6"	50.6"
<b>H</b> – Inside bed length at floor	79.4" – Standard Bed 98.2" – Long Bed	79.4"	69.9" – Short Bed 79.4" – Standard Bed
Head room (front/rear)	43.1"/-	43.0"/39.9"	43.0"/40.1"
Leg room (front/rear)	44.5"/-	44.5"/35.2"	44.5"/43.4"
Shoulder room (front/rear)	66.0"/-	66.0"/64.9"	66.0"/65.2" 64.5"/64.0" – ZR2 <sup>2</sup>
Hip room (front/rear)	60.9"/-	61.2"/60.2"	61.2"/60.2" 60.8"/59.3" – ZR2 <sup>2</sup>



A

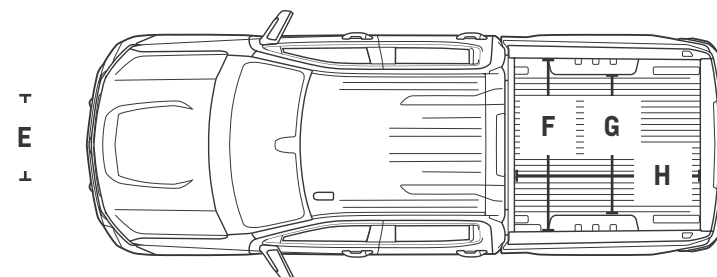


B



C

D



E

F

G

H

<sup>1</sup> Cargo and load capacity limited by weight and distribution. <sup>2</sup> ZR2 has very limited availability.

# ALWAYS READY FOR OVERTIME.

You know what Chevrolet Commercial Vehicles call 9 to 5? A decent start. Our lineup is ready to make light work of a long week, led by the powerful and dependable Silverado 1500 and Silverado HD, plus Silverado 3500 HD Chassis Cab. And let's not forget the strength of medium-duty Silverado 4500 HD/5500 HD/6500 HD Chassis Cabs, the maneuverability of the Low Cab Forward series and the utility of Express Vans. It all adds up to an unbeatable crew that never stops working.



## COMMERCIAL PROGRAMS

### ONSTAR BUSINESS SOLUTIONS

OnStar Business Solutions is a family of products that offers insight to find efficiencies, foresight to make better decisions, and confidence in knowing your people and your assets are protected and connected. Learn more at [onstar.com/BusinessSolutions](https://onstar.com/BusinessSolutions).

Manage the way your business moves with OnStar Vehicle Insights™<sup>1</sup> by OnStar Business Solutions. You can see your fleet in real time and receive actionable information to make more informed decisions. Learn more at [onstarvehicleinsights.com](https://onstarvehicleinsights.com).

### BUSINESS CHOICE

This program<sup>2</sup> can give you the best value on the vehicles you count on. Business Choice includes a cash allowance on either GM Accessories or Upfits,<sup>3</sup> and you can even add the most current retail offers to your deal. Learn more at [chevrolet.com/business-choice-offers](https://chevrolet.com/business-choice-offers).

### BUSINESS ELITE DEALERS

These specialized dealers provide the know-how to help you select the right vehicles for the job. Plus, every Business Elite service department has the facilities, tools and technicians for your needs. Learn more at [chevrolet.com/commercial/business-elite](https://chevrolet.com/commercial/business-elite).



<sup>1</sup> Terms apply. Available on select properly equipped 2015 model year and newer GM vehicles (excludes Volt, Low Cab Forward Trucks and GM vehicles built without OnStar Hardware, which includes but is not limited to select base Chevrolet and GMC trucks). Requires an active connected vehicle services plan. Fees, services, and availability subject to change without notice. Applicable taxes not included. Does not include emergency or security services. Diagnostics capabilities vary by vehicle model. Not all issues will deliver alerts. See [onstarvehicleinsights.com](https://onstarvehicleinsights.com) for details and limitations. <sup>2</sup> The 2022 Business Choice Program is valid from September 10, 2021, to January 2, 2023. Customer must purchase or lease their vehicle during the program period and be prepared to provide proof of business ownership. Vehicle must be used in the day-to-day operations of the business and not solely for transportation purposes. This program may not be compatible with other offers or incentive programs. Consult with your GM dealer for program compatibility and other restrictions. For complete program requirements, including information regarding offers, vehicles, equipment, options, warranties, and ordering, consult your GM dealer. To qualify, vehicle must be used in the day-to-day operations of your business and not solely for personal/non-business-related transportation purposes. Proof of business ownership may be required. Not available with some other offers. For complete program requirements, including information regarding offers, vehicles, equipment, options, warranties, and ordering, consult your GM dealer. Take delivery by January 2, 2023. See dealer for details. <sup>3</sup> Equipment from independent suppliers is not covered by the GM New Vehicle Limited Warranty. GM is not responsible for the safety or quality of independent supplier alterations.



## IMPORTANT INFORMATION



You may also want to consider Silverado HD. For more details, go to [chevrolet.com/commercial](https://chevrolet.com/commercial).

## EVERY STEP OF THE WAY.

You may be discovering Chevrolet through a personalized online shopping experience or enjoying every year of vehicle ownership. Either way, we're committed to providing the tools and programs you need to help you get the most out of your journey.

### Build & Price >

Create your perfect Chevrolet from start to finish.

### Chevy MyWay<sup>1</sup> >

Engage in a real-time virtual video experience with a Chevy product specialist.

### Chevrolet Complete Care >

Enjoy an owner benefit program that provides excellent service and support from day one.

### Chevy Truck Legends >

Honoring our dependable, long-lasting trucks and the people who keep them going strong.

### Limited Warranty Coverage >

Discover all the ways Chevrolet is committed to providing an excellent ownership experience.



GM, the GM logo, Chevrolet, the Chevrolet logo, and the slogans, emblems, vehicle model names, vehicle body designs and other marks appearing in this brochure are the trademarks and/or service marks of General Motors, its subsidiaries, affiliates or licensors. ©2022 OnStar LLC. All rights reserved. Sirius, XM, SiriusXM and all related marks and logos are trademarks of Sirius XM Radio Inc. Apple CarPlay, iPhone, Siri and Apple Music are trademarks of Apple Inc., registered in the U.S. and other countries. The Bluetooth word mark is a registered trademark owned by Bluetooth SIG, Inc., and any use of such mark by Chevrolet is under license. Bose is a registered trademark of the Bose Corp. Android, Google Play and Android Auto are trademarks of Google LLC.

©2022 General Motors. All rights reserved. August 2022

## FIND NEW ROADS™

[CHEVROLET.COM](https://chevrolet.com)

<sup>1</sup> Chevy MyWay is available to anyone over 18 in the United States to access and experience via [chevrolet.com/myway](https://chevrolet.com/myway).